



SZABO SCANDIC

Part of Europa Biosite

Produktinformation



Forschungsprodukte & Biochemikalien



Zellkultur & Verbrauchsmaterial



Diagnostik & molekulare Diagnostik



Laborgeräte & Service

Weitere Information auf den folgenden Seiten!
See the following pages for more information!



Lieferung & Zahlungsart

siehe unsere [Liefer- und Versandbedingungen](#)

Zuschläge

- Mindermengenzuschlag
- Trockeneiszuschlag
- Gefahrgutzuschlag
- Expressversand

SZABO-SCANDIC Handels GmbH

Quellenstraße 110, A-1100 Wien

T. +43(0)1 489 3961-0

F. +43(0)1 489 3961-7

mail@szabo-scandic.com

www.szabo-scandic.com

[linkedin.com/company/szaboscandic](https://www.linkedin.com/company/szaboscandic)



B-Myb Antibody

Rabbit Polyclonal

Antigen Affinity Purified

Protein ID NP_002457.1

Catalog No. A301-654A

GeneID 4605

Lot No. A301-654A-2



APPLICATIONS IP, IHC

SPECIES REACTIVITY Human

AMOUNT 100 µl

CONCENTRATION 1000 µg/ml

STORAGE/SHELF LIFE 2 – 8° C / 1 year from date of receipt

PHYSICAL STATE Liquid

BUFFER Tris-citrate/phosphate buffer, pH 7 to 8 containing 0.09% Sodium Azide

ISOTYPE IgG

ORIGIN USA

PRODUCTION PROCEDURES Antibody was affinity purified using an epitope specific to B-Myb immobilized on solid support.

The epitope recognized by A301-654A maps to a region between residue 250 and 300 of human MYB-related protein B using the numbering given in entry NP_002457.1 (GeneID 4605).

Immunoglobulin concentration was determined by extinction coefficient: absorbance at 280 nm of 1.4 equals 1.0 mg of IgG.

APPLICATIONS

Centrifuge tube to remove product from lid. Optimal working dilutions should be determined experimentally by the investigator. Prepare working dilution immediately before use.

Western Blot Not recommended. A301-654A has not performed satisfactorily when used for WB of B-Myb in crude preparations (e.g. whole cell lysate). This antibody can be used for WB of enriched (e.g. immunoprecipitated) sources of B-Myb.

Immunoprecipitation 2 – 10 µg/mg lysate

Immunohistochemistry 1:500 to 1:2,000. Epitope retrieval with citrate buffer pH6.0 is recommended for FFPE tissue sections.

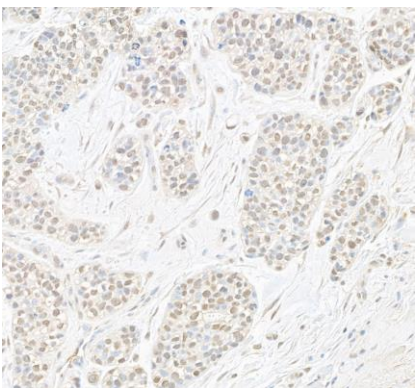
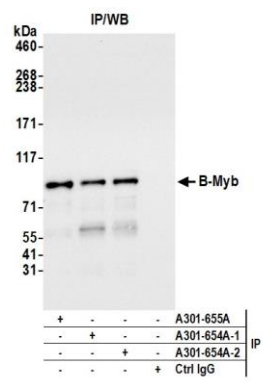
IHC HUMAN CONTROLS Anaplastic Thyroid Carcinoma, Breast Carcinoma

ADDITIONAL INFO <https://www.bethyl.com/product/A301-654A>

Use the link above to view SDS, a current list of citations, and other product specific information.

IP-western blot protocol: https://www.bethyl.com/content/protocol_IP_WB

This document certifies that this product has met all of the quality control standards defined by Bethyl Laboratories, Inc.
Brian McWilliams, PhD Date: November 13, 2020



Detection of human B-Myb by western blot of immunoprecipitates. *Samples:* Whole cell lysate (1.0 mg per IP reaction; 20% of IP loaded) from HEK293T cells prepared using NETN lysis buffer. *Antibodies:* Affinity purified rabbit anti-B-Myb antibody A301-654A (lot A301-654A-2) used for IP at 6 µg per reaction. B-Myb was also immunoprecipitated by a previous lot of this antibody (lot A301-654A-1) and rabbit anti-B-Myb antibody A301-655A. For blotting immunoprecipitated B-Myb, A301-654A was used at 0.04 µg/ml. *Detection:* Chemiluminescence with an exposure time of 3 seconds.

Detection of human B-Myb by immunohistochemistry. *Sample:* FFPE section of human breast carcinoma. *Antibody:* Affinity purified rabbit anti-B-Myb (Cat. No. A301-654A Lot 2) used at a dilution of 1:1,000 (1 µg/ml). *Detection:* DAB