



SZABO SCANDIC

Part of Europa Biosite

Produktinformation



Forschungsprodukte & Biochemikalien



Zellkultur & Verbrauchsmaterial



Diagnostik & molekulare Diagnostik



Laborgeräte & Service

Weitere Information auf den folgenden Seiten!
See the following pages for more information!



Lieferung & Zahlungsart

siehe unsere [Liefer- und Versandbedingungen](#)

Zuschläge

- Mindermengenzuschlag
- Trockeneiszuschlag
- Gefahrgutzuschlag
- Expressversand

SZABO-SCANDIC HandelsgmbH

Quellenstraße 110, A-1100 Wien

T. +43(0)1 489 3961-0

F. +43(0)1 489 3961-7

mail@szabo-scandic.com

www.szabo-scandic.com

[linkedin.com/company/szaboscandic](https://www.linkedin.com/company/szaboscandic) 

CEP290 Antibody

Rabbit Polyclonal

Antigen Affinity Purified

Protein ID NP_079390.3

Catalog No. A301-659A-T

GeneID 80184

Lot No. A301-659A-T-2

APPLICATIONS WB, IP, ICC-IF

SPECIES REACTIVITY Human

AMOUNT 10 µl

CONCENTRATION 1000 µg/ml

STORAGE/SHELF LIFE 2 – 8°C / 1 year from date of receipt

PHYSICAL STATE Liquid

BUFFER Tris-citrate/phosphate buffer, pH 7 to 8 containing 0.09% Sodium Azide

ISOTYPE IgG

ORIGIN USA

PRODUCTION PROCEDURES Antibody was affinity purified using an epitope specific to CEP290 immobilized on solid support.

The epitope recognized by A301-659A-T maps to a region between residue 2429 and 2479 of human centrosomal protein 290kDa using the numbering given in entry NP_079390.3 (GeneID 80184).

APPLICATIONS Centrifuge tube to remove product from lid. Optimal working dilutions should be determined experimentally by the investigator. Prepare working dilution immediately before use.

Western Blot 1:2,000 – 1:10,000

Immunoprecipitation 2 – 5 µg/mg lysate

Immunofluorescence (ICC) 1:250 – 1:1,000. Formaldehyde fixation is recommended. Permeabilization with Triton-X 100 is recommended for formaldehyde-fixed cells.

ADDITIONAL INFO <https://www.bethyl.com/product/A301-659A-T>

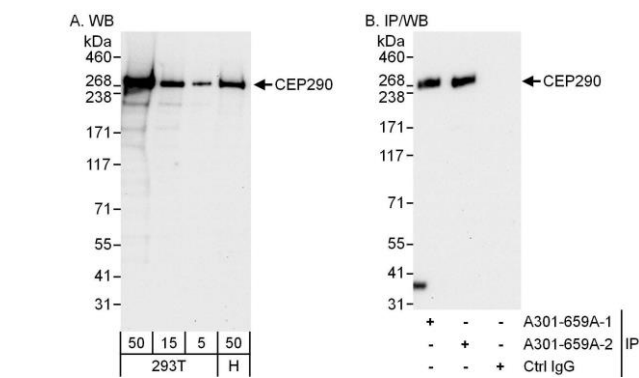
Use the link above to view SDS, a current list of citations, and other product specific information.

IP-western blot protocol: https://www.bethyl.com/content/protocol_IP_WB

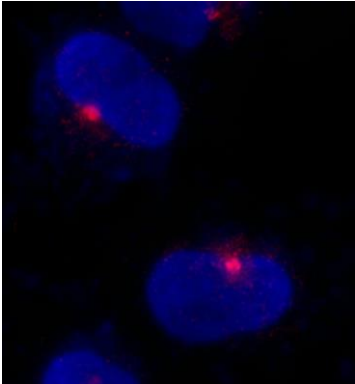
This document certifies that this product has met all of the quality control standards defined by Bethyl Laboratories, Inc.

Michael Spencer, PhD

Date: June 6, 2022



Detection of human CEP290 by western blot and immunoprecipitation. *Samples:* Whole cell lysate from HeLa (5, 15 and 50 µg for WB; 1 mg for IP, 20% of IP loaded) and HEK293T (T; 50 µg) cells. *Antibodies:* Affinity purified rabbit anti-CEP290 antibody A301-659A used for WB at 0.1 µg/ml (A) and 1 µg/ml (B) and used for IP at 3 µg/mg lysate. CEP290 was also immunoprecipitated by rabbit anti-CEP290 antibody BL6289, which recognizes an upstream epitope. *Detection:* Chemiluminescence with exposure times of 30 seconds (A) and 10 second (B).



Detection of human CEP290 by immunocytochemistry. *Sample:* NBF-fixed asynchronous HeLa cells. *Antibody:* Affinity purified rabbit anti-CEP290 (Cat. No. A301-659A) used at a dilution of 1:500 (2 µg/ml). *Detection:* Red-fluorescent goat anti-rabbit IgG cross-adsorbed Antibody DyLight 594 used at a dilution of 1:100.