



# SZABO SCANDIC

Part of Europa Biosite

## Produktinformation



Forschungsprodukte & Biochemikalien



Zellkultur & Verbrauchsmaterial



Diagnostik & molekulare Diagnostik



Laborgeräte & Service

Weitere Information auf den folgenden Seiten!  
See the following pages for more information!



### Lieferung & Zahlungsart

siehe unsere [Liefer- und Versandbedingungen](#)

### Zuschläge

- Mindermengenzuschlag
- Trockeneiszuschlag
- Gefahrgutzuschlag
- Expressversand

### SZABO-SCANDIC Handels GmbH

Quellenstraße 110, A-1100 Wien

T. +43(0)1 489 3961-0

F. +43(0)1 489 3961-7

[mail@szabo-scandic.com](mailto:mail@szabo-scandic.com)

[www.szabo-scandic.com](http://www.szabo-scandic.com)

[linkedin.com/company/szaboscandic](https://www.linkedin.com/company/szaboscandic) 

# cAbl Antibody

Rabbit Polyclonal

Antigen Affinity Purified Protein ID NP\_005148.2

Catalog No. A301-660A-T GeneID 25

Lot No. A301-660A-T-1

**APPLICATIONS** WB, IP, IHC, ICC-IF

**SPECIES REACTIVITY** Human

**AMOUNT** 10 µl

**CONCENTRATION** 200 µg/ml

**STORAGE/SHELF LIFE** 2 – 8°C / 1 year from date of receipt

**PHYSICAL STATE** Liquid

**BUFFER** Tris-buffered Saline containing 0.1% BSA and 0.09% Sodium Azide

**ISOTYPE** IgG

**ORIGIN** USA

**PRODUCTION PROCEDURES** Antibody was affinity purified using an epitope specific to cAbl immobilized on solid support.

The epitope recognized by A301-660A-T maps to a region between residue 550 and 600 of human v-abl Abelson murine leukemia viral oncogene homolog 1 using the numbering given in entry NP\_005148.2 (GeneID 25).

**APPLICATIONS** Centrifuge tube to remove product from lid. Optimal working dilutions should be determined experimentally by the investigator. Prepare working dilution immediately before use.

Western Blot 1:2,000 – 1:10,000

Immunoprecipitation 2 – 5 µg/mg lysate

Immunohistochemistry 1:100 – 1:1,000. Epitope retrieval with citrate buffer pH 6.0 is recommended for FFPE tissue sections.

Immunofluorescence (ICC) 1:100 – 1:1,000. Epitope retrieval with citrate buffer pH 6.0 is recommended for FFPE cell sections. For cytospin preparations of formaldehyde fixed cells permeabilization with Triton-X 100 is recommended.

**ADDITIONAL INFO** <https://www.bethyl.com/product/A301-660A-T>

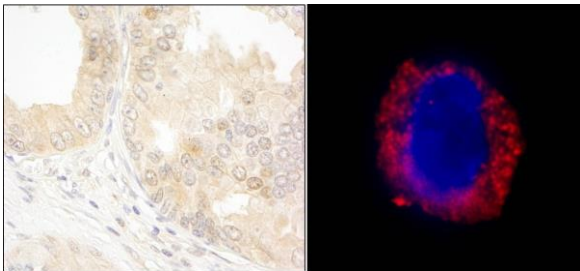
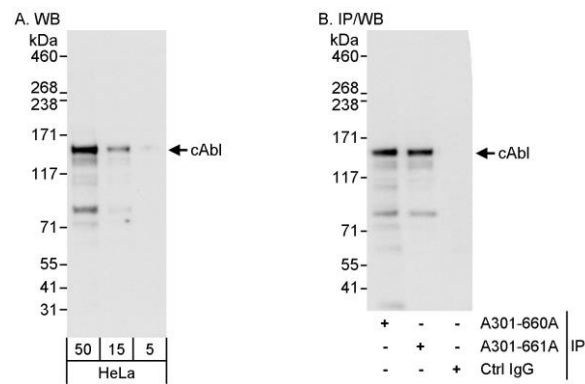
Use the link above to view SDS, a current list of citations, and other product specific information.

IP-western blot protocol: [https://www.bethyl.com/content/protocol\\_IP\\_WB](https://www.bethyl.com/content/protocol_IP_WB)

This document certifies that this product has met all of the quality control standards defined by Bethyl Laboratories, Inc.

Michael Spencer, PhD

Date: June 6, 2022



**Detection of human cAbl by western blot and immunoprecipitation.** *Samples:* Whole cell lysate (5, 15 and 50 µg for WB; 1 mg for IP, 20% of IP loaded) from HeLa cells. *Antibodies:* Affinity purified rabbit anti-cAbl antibody A301-660A used for WB at 0.04 µg/ml (A) and 1 µg/ml (B) and used for IP at 3 µg/mg lysate. cAbl was also immunoprecipitated by rabbit anti-cAbl antibody A301-661A, which recognizes a downstream epitope. *Detection:* Chemiluminescence with exposure times of 30 seconds (A) and 3 seconds (B).

**Detection of human cAbl by immunohistochemistry and immunocytochemistry.** *Sample:* FFPE section of human prostate carcinoma (left) and formaldehyde-fixed K-562 cells (contains the chromosomal translocation, t(9:22) that creates the BCR/ABL fusion gene) (right). *Antibody:* Affinity purified rabbit anti-cAbl (Cat. No.A301-660A) used at a dilution of 1:1,000 (0.2µg/ml) and 1:200 (1 µg/ml). *Detection:* DAB