



SZABO SCANDIC

Part of Europa Biosite

Produktinformation



Forschungsprodukte & Biochemikalien



Zellkultur & Verbrauchsmaterial



Diagnostik & molekulare Diagnostik



Laborgeräte & Service

Weitere Information auf den folgenden Seiten!
See the following pages for more information!



Lieferung & Zahlungsart

siehe unsere [Liefer- und Versandbedingungen](#)

Zuschläge

- Mindermengenzuschlag
- Trockeneiszuschlag
- Gefahrgutzuschlag
- Expressversand

SZABO-SCANDIC Handels GmbH

Quellenstraße 110, A-1100 Wien

T. +43(0)1 489 3961-0

F. +43(0)1 489 3961-7

mail@szabo-scandic.com

www.szabo-scandic.com

[linkedin.com/company/szaboscandic](https://www.linkedin.com/company/szaboscandic) 

cAbl Antibody

Rabbit Polyclonal

Antigen Affinity Purified

Protein ID NP_005148.2

Catalog No. A301-661A

GeneID 25

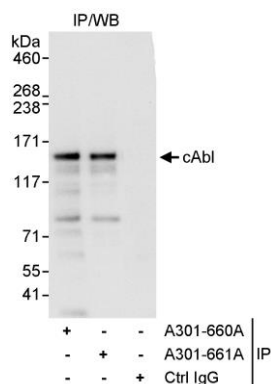
Lot No. A301-661A-1



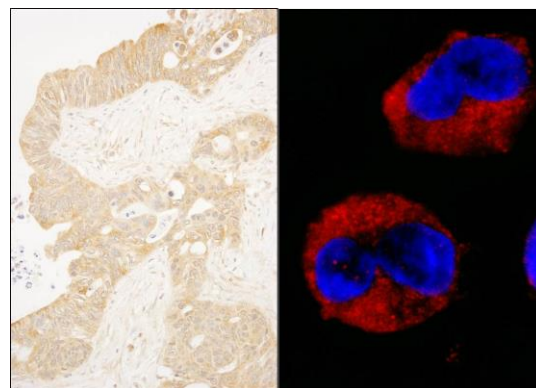
APPLICATIONS	IP, IHC, ICC-IF								
SPECIES REACTIVITY	Human								
AMOUNT	100 µl								
CONCENTRATION	1000 µg/ml								
STORAGE/SHELF LIFE	2 – 8° C / 1 year from date of receipt								
PHYSICAL STATE	Liquid								
BUFFER	Tris-citrate/phosphate buffer, pH 7 to 8 containing 0.09% Sodium Azide								
ISOTYPE	IgG								
ORIGIN	USA								
PRODUCTION PROCEDURES	<p>Antibody was affinity purified using an epitope specific to cAbl immobilized on solid support.</p> <p>The epitope recognized by A301-661A maps to a region between residue 850 and 900 of human v-abl Abelson murine leukemia viral oncogene homolog 1 using the numbering given in entry NP_005148.2 (GeneID 25).</p> <p>Immunoglobulin concentration was determined by extinction coefficient: absorbance at 280 nm of 1.4 equals 1.0 mg of IgG.</p>								
APPLICATIONS	<p>Centrifuge tube to remove product from lid. Optimal working dilutions should be determined experimentally by the investigator. Prepare working dilution immediately before use.</p> <table><tr><td>Western Blot</td><td>Not recommended. Use rabbit anti-cAbl antibody A301-660A.</td></tr><tr><td>Immunoprecipitation</td><td>2 – 5 µg/mg lysate</td></tr><tr><td>Immunohistochemistry</td><td>1:500 – 1:2,000. Epitope retrieval with citrate buffer pH 6.0 is recommended for FFPE tissue sections.</td></tr><tr><td>Immunofluorescence (ICC)</td><td>1:500 – 1:2,000. Epitope retrieval with citrate buffer pH 6.0 is recommended for FFPE cell sections. For cytospin preparations of formaldehyde fixed cells permeabilization with Triton-X 100 is recommended.</td></tr></table>	Western Blot	Not recommended. Use rabbit anti-cAbl antibody A301-660A.	Immunoprecipitation	2 – 5 µg/mg lysate	Immunohistochemistry	1:500 – 1:2,000. Epitope retrieval with citrate buffer pH 6.0 is recommended for FFPE tissue sections.	Immunofluorescence (ICC)	1:500 – 1:2,000. Epitope retrieval with citrate buffer pH 6.0 is recommended for FFPE cell sections. For cytospin preparations of formaldehyde fixed cells permeabilization with Triton-X 100 is recommended.
Western Blot	Not recommended. Use rabbit anti-cAbl antibody A301-660A.								
Immunoprecipitation	2 – 5 µg/mg lysate								
Immunohistochemistry	1:500 – 1:2,000. Epitope retrieval with citrate buffer pH 6.0 is recommended for FFPE tissue sections.								
Immunofluorescence (ICC)	1:500 – 1:2,000. Epitope retrieval with citrate buffer pH 6.0 is recommended for FFPE cell sections. For cytospin preparations of formaldehyde fixed cells permeabilization with Triton-X 100 is recommended.								
APPLICATION NOTES	Western blot of immunoprecipitates performed using Normal Pig Serum (Cat. No. S100-020), Goat anti-Rabbit Light Chain HRP Conjugate (Cat. No. A120-113P) and 4-8% SDS-PAGE (link to IP-western blot protocol in Additional Info section below).								
IHC HUMAN CONTROLS	Breast Carcinoma, Ovarian Carcinoma, Prostate Carcinoma								
ADDITIONAL INFO	<p>https://www.bethyl.com/product/A301-661A</p> <p>Use the link above to view SDS, a current list of citations, and other product specific information.</p> <p>IP-western blot protocol: https://www.bethyl.com/content/protocol_IP_WB</p>								

This document certifies that this product has met all of the quality control standards defined by Bethyl Laboratories, Inc.
Eric McIntush, PhD | Chief Scientific Officer

Date: June 24, 2019



Detection of human cAbl by western blot of immunoprecipitates. *Samples:* Whole cell lysate (1 mg for IP, 20% of IP loaded) from HeLa cells. *Antibodies:* Affinity purified rabbit anti-cAbl antibody A301-661A used for IP at 3 µg/mg lysate. cAbl was also immunoprecipitated by rabbit anti-cAbl antibody A301-660A, which recognizes an upstream epitope. For blotting immunoprecipitated cAbl, A301-660A was used at 1 µg/ml. *Detection:* Chemiluminescence with an exposure time of 3 second.



Detection of human cAbl by immunohistochemistry and immunocytochemistry. *Sample:* FFPE section of human ovarian carcinoma (left) and formaldehyde-fixed K-562 cells (contains the chromosomal translocation, t(9:22) that creates the BCR/ABL fusion gene) (right). *Antibody:* Affinity purified rabbit anti-cAbl (Cat. No.A301-661A) used at a dilution of 1:1,000 (1µg/ml). *Detection:* DAB