



SZABO SCANDIC

Part of Europa Biosite

Produktinformation



Forschungsprodukte & Biochemikalien



Zellkultur & Verbrauchsmaterial



Diagnostik & molekulare Diagnostik



Laborgeräte & Service

Weitere Information auf den folgenden Seiten!
See the following pages for more information!



Lieferung & Zahlungsart

siehe unsere [Liefer- und Versandbedingungen](#)

Zuschläge

- Mindermengenzuschlag
- Trockeneiszuschlag
- Gefahrgutzuschlag
- Expressversand

SZABO-SCANDIC HandelsgmbH

Quellenstraße 110, A-1100 Wien

T. +43(0)1 489 3961-0

F. +43(0)1 489 3961-7

mail@szabo-scandic.com

www.szabo-scandic.com

[linkedin.com/company/szaboscandic](https://www.linkedin.com/company/szaboscandic) 

PRKAR2A/PKA-R11alpha Antibody

Rabbit Polyclonal

Antigen Affinity Purified Protein ID NP_004148.1

Catalog No. A301-670A-T GenelD 5576

Lot No. A301-670A-T-1

APPLICATIONS	WB, IP, IHC
SPECIES REACTIVITY	Human
AMOUNT	10 µl
CONCENTRATION	200 µg/ml
STORAGE/SHELF LIFE	2 – 8°C / 1 year from date of receipt
PHYSICAL STATE	Liquid
BUFFER	Tris-buffered Saline containing 0.1% BSA and 0.09% Sodium Azide
ISOTYPE	IgG
ORIGIN	USA
PRODUCTION PROCEDURES	Antibody was affinity purified using an epitope specific to PRKAR2A/PKA-R11alpha immobilized on solid support.

The epitope recognized by A301-670A-T maps to a region between residue 50 and 100 of human protein kinase, cAMP-dependent, regulatory, type II, alpha using the numbering given in entry NP_004148.1 (GeneID 5576).

APPLICATIONS Centrifuge tube to remove product from lid. Optimal working dilutions should be determined experimentally by the investigator. Prepare working dilution immediately before use.

Western Blot 1:2,000 – 1:10,000

Immunoprecipitation 2 – 5 µg/mg lysate

Immunohistochemistry 1:200 – 1:1,000. Epitope retrieval with citrate buffer pH 6.0 is recommended for FFPE tissue sections.

ADDITIONAL INFO <https://www.bethyl.com/product/A301-670A-T>

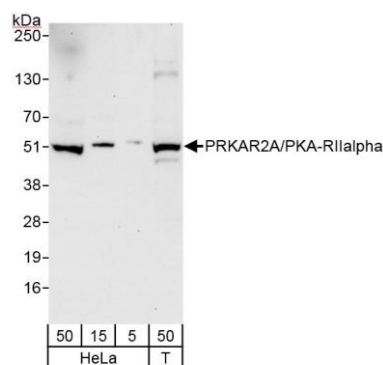
Use the link above to view SDS, a current list of citations, and other product specific information.

IP-western blot protocol: https://www.bethyl.com/content/protocol_IP_WB

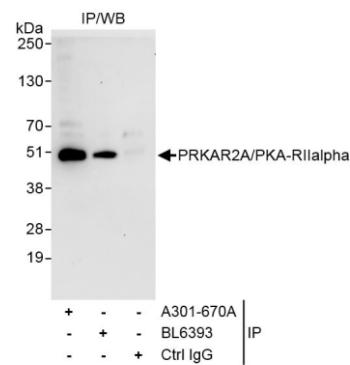
This document certifies that this product has met all of the quality control standards defined by Bethyl Laboratories, Inc.

Michael Spencer, PhD

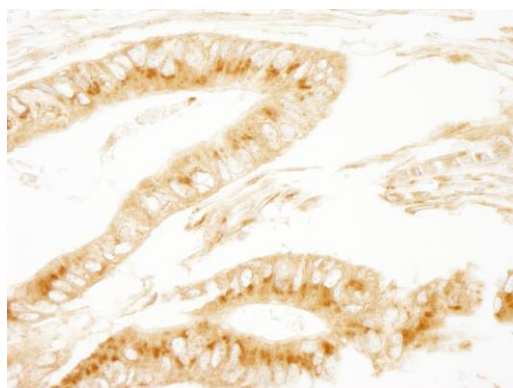
Date: June 6, 2022



Detection of human PRKAR2A/PKA-R11alpha by western blot. *Samples:* Whole cell lysate from HeLa (5, 15 and 50 μ g) and HEK293T (T; 50 μ g) cells. *Antibodies:* Affinity purified rabbit anti-PRKAR2A/PKA-R11alpha antibody A301-670A (lot A301-670A-1) used for WB at 0.04 μ g/ml. *Detection:* Chemiluminescence with exposure time of 30 seconds.



Detection of human PRKAR2A/PKA-R11alpha by western blot of immunoprecipitates *Samples:* Whole cell lysate (1 mg for IP, 20% of IP loaded) from HeLa cells. *Antibodies:* Affinity purified rabbit anti-PRKAR2A/PKA-R11alpha antibody A301-670A (lot A301-670A-1) used for IP at 3 μ g/mg lysate. PRKAR2A/PKA-R11alpha was also immunoprecipitated by rabbit anti-PRKAR2A/PKA-R11alpha antibody BL6393, which recognizes a downstream epitope. For blotting immunoprecipitated PRKAR2A/PKA-R11alpha, A301-670A was used at 1.0 μ g/ml. *Detection:* Chemiluminescence with exposure time of 30 seconds.



Detection of human PRKAR2A/PKA-R11alpha by immunohistochemistry. *Sample:* FFPE section of human colon carcinoma. *Antibody:* Affinity purified rabbit anti-PRKAR2A/PKA-R11alpha (Cat. No. A301-670A lot 1) used at a dilution of 1:200 (1 μ g/ml). *Detection:* DAB