



SZABO SCANDIC

Part of Europa Biosite

Produktinformation



Forschungsprodukte & Biochemikalien



Zellkultur & Verbrauchsmaterial



Diagnostik & molekulare Diagnostik



Laborgeräte & Service

Weitere Information auf den folgenden Seiten!
See the following pages for more information!



Lieferung & Zahlungsart

siehe unsere [Liefer- und Versandbedingungen](#)

Zuschläge

- Mindermengenzuschlag
- Trockeneiszuschlag
- Gefahrgutzuschlag
- Expressversand

SZABO-SCANDIC HandelsgmbH

Quellenstraße 110, A-1100 Wien

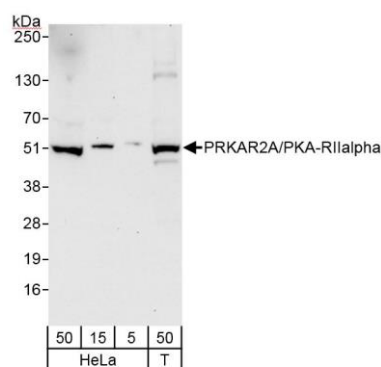
T. +43(0)1 489 3961-0

F. +43(0)1 489 3961-7

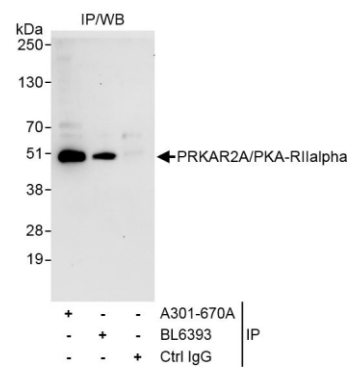
mail@szabo-scandic.com

www.szabo-scandic.com

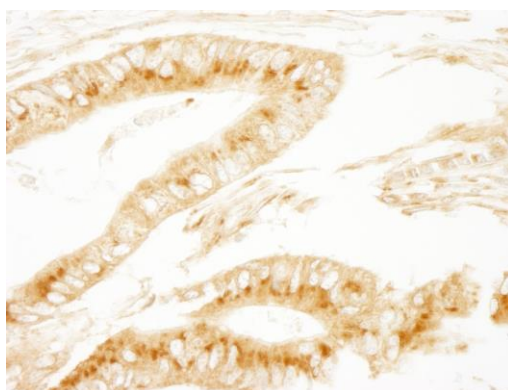
[linkedin.com/company/szaboscandic](https://www.linkedin.com/company/szaboscandic) 



Detection of human PRKAR2A/PKA-R11alpha by western blot. *Samples:* Whole cell lysate from HeLa (5, 15 and 50 µg) and HEK293T (T; 50 µg) cells. *Antibodies:* Affinity purified rabbit anti-PRKAR2A/PKA-R11alpha antibody A301-670A (lot A301-670A-1) used for WB at 0.04 µg/ml. *Detection:* Chemiluminescence with exposure time of 30 seconds.



Detection of human PRKAR2A/PKA-R11alpha by western blot of immunoprecipitates *Samples:* Whole cell lysate (1 mg for IP, 20% of IP loaded) from HeLa cells. *Antibodies:* Affinity purified rabbit anti-PRKAR2A/PKA-R11alpha antibody A301-670A (lot A301-670A-1) used for IP at 3 µg/mg lysate. PRKAR2A/PKA-R11alpha was also immunoprecipitated by rabbit anti-PRKAR2A/PKA-R11alpha antibody BL6393, which recognizes a downstream epitope. For blotting immunoprecipitated PRKAR2A/PKA-R11alpha, A301-670A was used at 1.0 µg/ml. *Detection:* Chemiluminescence with exposure time of 30 seconds.



Detection of human PRKAR2A/PKA-R11alpha by immunohistochemistry. *Sample:* FFPE section of human colon carcinoma. *Antibody:* Affinity purified rabbit anti-PRKAR2A/PKA-R11alpha (Cat. No. A301-670A lot 1) used at a dilution of 1:200 (1 µg/ml). *Detection:* DAB