



# SZABO SCANDIC

Part of Europa Biosite

## Produktinformation



Forschungsprodukte & Biochemikalien



Zellkultur & Verbrauchsmaterial



Diagnostik & molekulare Diagnostik



Laborgeräte & Service

Weitere Information auf den folgenden Seiten!  
See the following pages for more information!



### Lieferung & Zahlungsart

siehe unsere [Liefer- und Versandbedingungen](#)

### Zuschläge

- Mindermengenzuschlag
- Trockeneiszuschlag
- Gefahrgutzuschlag
- Expressversand

### SZABO-SCANDIC HandelsgmbH

Quellenstraße 110, A-1100 Wien

T. +43(0)1 489 3961-0

F. +43(0)1 489 3961-7

[mail@szabo-scandic.com](mailto:mail@szabo-scandic.com)

[www.szabo-scandic.com](http://www.szabo-scandic.com)

[linkedin.com/company/szaboscandic](https://www.linkedin.com/company/szaboscandic) 

# BCoR Antibody

Rabbit Polyclonal

|                           |            |            |
|---------------------------|------------|------------|
| Antigen Affinity Purified | RefSeq ID  | EAW59426.1 |
| Catalog No. A301-673A     | Uniprot ID | Q6W2J9     |
| Lot No. 2                 | GeneID     | 54880      |

|                              |  |
|------------------------------|--|
| <b>APPLICATIONS</b>          | WB, IP   |
| <b>SPECIES REACTIVITY</b>    | Human  |
| <b>AMOUNT</b>                | 100 µl   |
| <b>CONCENTRATION</b>         | 1000 µg/ml   |
| <b>STORAGE/SHELF LIFE</b>    | 2 – 8°C / 1 year from date of receipt  |
| <b>PHYSICAL STATE</b>        | Liquid   |
| <b>BUFFER</b>                | Tris-citrate/phosphate buffer, pH 7 to 8 containing 0.09% Sodium Azide                         |
| <b>ISOTYPE</b>               | IgG  |
| <b>ORIGIN</b>                | USA  |
| <b>PRODUCTION PROCEDURES</b> | Antibody was affinity purified using an epitope specific to BCoR immobilized on solid support. |

The epitope recognized by A301-673A maps to a region between residue 1705 and 1755 of human BCL6 co-repressor using the numbering given in entry EAW59426.1 (GeneID 54880).

Immunoglobulin concentration was determined using Beer's Law where 1mg/mL IgG has an A280 of 1.4.

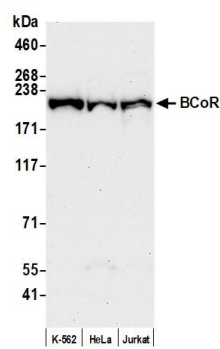
**APPLICATIONS** Centrifuge tube to remove product from lid. Optimal working dilutions should be determined experimentally by the investigator. Prepare working dilution immediately before use.

|                     |                   |
|---------------------|-------------------|
| Western Blot        | 1:2000 – 1:10,000 |
| Immunoprecipitation | 6 µg/mg lysate    |

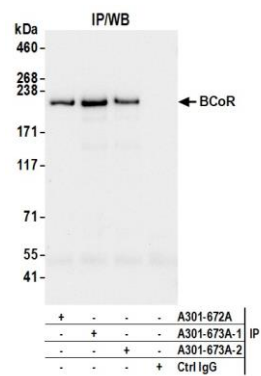
**ADDITIONAL INFO** <https://www.fortislife.com/p/A301-673A>

Use the link above to view SDS, a current list of citations, and other product specific information.

This document certifies that this product has met all of the quality control standards defined by Bethyl Laboratories, Inc.  
Michael Spencer, PhD Date: July 23, 2024



**Detection of human BCoR by western blot.** *Samples:* Whole cell lysate (50 µg) from K-562, HeLa, and Jurkat cells prepared using NETN lysis buffer. *Antibody:* Affinity purified rabbit anti-BCoR antibody (A301-673A lot 2) used for WB at 0.1 µg/ml. *Detection:* Chemiluminescence with an exposure time of 3 minutes.



**Detection of human BCoR by western blot of immunoprecipitates.** *Samples:* Whole cell lysate (1.0 mg per IP reaction; 20% of IP loaded) from K-562 cells prepared using NETN lysis buffer. *Antibody:* Affinity purified rabbit anti-BCoR antibody (A301-673A lot 2) used for IP at 6 µg per reaction. BCoR was also immunoprecipitated by a previous lot of this antibody (A301-673A lot 1) and a second antibody against a different epitope of BCoR (A301-672A). For blotting immunoprecipitated BCoR, A301-673A was used at 0.04 µg/ml. *Detection:* Chemiluminescence with an exposure time of 30 seconds.