



SZABO SCANDIC

Part of Europa Biosite

Produktinformation



Forschungsprodukte & Biochemikalien



Zellkultur & Verbrauchsmaterial



Diagnostik & molekulare Diagnostik



Laborgeräte & Service

Weitere Information auf den folgenden Seiten!
See the following pages for more information!



Lieferung & Zahlungsart

siehe unsere [Liefer- und Versandbedingungen](#)

Zuschläge

- Mindermengenzuschlag
- Trockeneiszuschlag
- Gefahrgutzuschlag
- Expressversand

SZABO-SCANDIC HandelsgmbH

Quellenstraße 110, A-1100 Wien

T. +43(0)1 489 3961-0

F. +43(0)1 489 3961-7

mail@szabo-scandic.com

www.szabo-scandic.com

[linkedin.com/company/szaboscandic](https://www.linkedin.com/company/szaboscandic) 

EF-1 delta Antibody

Rabbit Polyclonal

Antigen Affinity Purified

Protein ID NP_001951.2

Catalog No. A301-684A

GeneID 1936

Lot No. A301-684A-1



APPLICATIONS WB, IP

SPECIES REACTIVITY Human

AMOUNT 100 µl

CONCENTRATION 200 µg/ml

STORAGE/SHELF LIFE 2 – 8° C / 1 year from date of receipt

PHYSICAL STATE Liquid

BUFFER Tris-buffered Saline containing 0.1% BSA and 0.09% Sodium Azide

ISOTYPE IgG

ORIGIN USA

PRODUCTION PROCEDURES Antibody was affinity purified using an epitope specific to EF-1 delta immobilized on solid support.

The epitope recognized by A301-684A maps to a region between residue 80 and 130 of human eukaryotic translation elongation factor 1 delta using the numbering given in entry NP_001951.2 (GeneID 1936).

Immunoglobulin concentration was determined by extinction coefficient: absorbance at 280 nm of 1.4 equals 1.0 mg of IgG.

APPLICATIONS Centrifuge tube to remove product from lid. Optimal working dilutions should be determined experimentally by the investigator. Prepare working dilution immediately before use.

Western Blot 1:2,000 – 1:10,000

Immunoprecipitation 2 – 5 µg/mg lysate

APPLICATION NOTES Western blot of immunoprecipitates performed using Normal Pig Serum (Cat. No. S100-020), Goat anti-Rabbit Light Chain HRP Conjugate (Cat. No. A120-113P) and 4-20% SDS-PAGE (link to IP-western blot protocol in Additional Info section below).

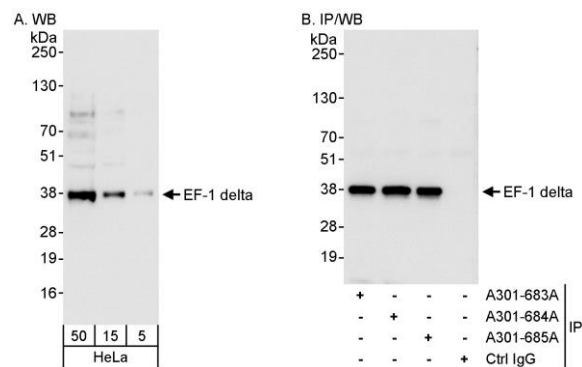
Western blot of lysates performed using standard western blot reagents and 4-20% SDS-PAGE.

ADDITIONAL INFO <https://www.bethyl.com/product/A301-684A>

Use the link above to view SDS, a current list of citations, and other product specific information.

IP-western blot protocol: https://www.bethyl.com/content/protocol_IP_WB

This document certifies that this product has met all of the quality control standards defined by Bethyl Laboratories, Inc.
Eric McIntush, PhD | Chief Scientific Officer Date: June 21, 2019



Detection of human EF-1 delta by western blot and immunoprecipitation. *Samples:* Whole cell lysate (5, 15 and 50 μ g for WB; 1 mg for IP, 20% of IP loaded) from HeLa cells. *Antibodies:* Affinity purified rabbit anti-EF-1 delta antibody A301-684A used for WB at 0.04 μ g/ml (A) and 1 μ g/ml (B) and used for IP at 3 μ g/mg lysate. EF-1 delta was also immunoprecipitated by rabbit anti-EF-1 delta antibodies A301-683A and A301-685A, which recognize other epitopes. *Detection:* Chemiluminescence with exposure times of 3 seconds (A) and 1 second (B).