



# SZABO SCANDIC

Part of Europa Biosite

## Produktinformation



Forschungsprodukte & Biochemikalien



Zellkultur & Verbrauchsmaterial



Diagnostik & molekulare Diagnostik



Laborgeräte & Service

Weitere Information auf den folgenden Seiten!  
See the following pages for more information!



### Lieferung & Zahlungsart

siehe unsere [Liefer- und Versandbedingungen](#)

### Zuschläge

- Mindermengenzuschlag
- Trockeneiszuschlag
- Gefahrgutzuschlag
- Expressversand

### SZABO-SCANDIC HandelsgmbH

Quellenstraße 110, A-1100 Wien

T. +43(0)1 489 3961-0

F. +43(0)1 489 3961-7

[mail@szabo-scandic.com](mailto:mail@szabo-scandic.com)

[www.szabo-scandic.com](http://www.szabo-scandic.com)

[linkedin.com/company/szaboscandic](https://www.linkedin.com/company/szaboscandic)



# eIF4G3/eIF4GII Antibody

Rabbit Polyclonal

Antigen Affinity Purified

Protein ID NP\_003751.2

Catalog No. A301-768A

GeneID 8672

Lot No. A301-768A-1



APPLICATIONS	WB, IP
SPECIES REACTIVITY	Human
AMOUNT	100 µl
CONCENTRATION	200 µg/ml
STORAGE/SHELF LIFE	2 – 8° C / 1 year from date of receipt
PHYSICAL STATE	Liquid
BUFFER	Tris-buffered Saline containing 0.1% BSA and 0.09% Sodium Azide
ISOTYPE	IgG
ORIGIN	USA
PRODUCTION PROCEDURES	Antibody was affinity purified using an epitope specific to eIF4G3/eIF4GII immobilized on solid support.

The epitope recognized by A301-768A maps to a region between residue 300 and 350 of human eukaryotic translation initiation factor 4 gamma, 3 (eukaryotic translation initiation factor 4 gamma II) using the numbering given in entry NP\_003751.2 (GeneID 8672).

Immunoglobulin concentration was determined by extinction coefficient: absorbance at 280 nm of 1.4 equals 1.0 mg of IgG.

**APPLICATIONS** Centrifuge tube to remove product from lid. Optimal working dilutions should be determined experimentally by the investigator. Prepare working dilution immediately before use.

Western Blot 1:2,000 – 1:10,000

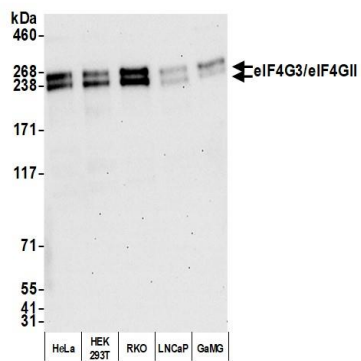
Immunoprecipitation 2 – 10 µg/mg lysate

**APPLICATION NOTES** Western blot of lysates performed using standard western blot reagents and 4–8% SDS-PAGE.

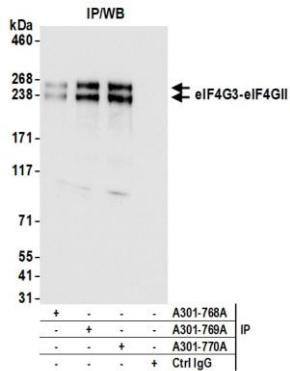
**ADDITIONAL INFO** <https://www.bethyl.com/product/A301-768A>

Use the link above to view SDS, a current list of citations, and other product specific information.

This document certifies that this product has met all of the quality control standards defined by Bethyl Laboratories, Inc.  
Eric McIntush, PhD | Chief Scientific Officer Date: February 28, 2020



**Detection of human eIF4G3/eIF4GII by western blot.**  
*Samples:* Whole cell lysate (10 µg) from HeLa, HEK293T, RKO, LNCaP, and GaMG cells prepared using NETN lysis buffer. *Antibody:* Affinity purified rabbit anti-eIF4G3/eIF4GII antibody A301-768A (lot A301-768A-1) used for WB at 0.04 µg/ml. *Detection:* Chemiluminescence with an exposure time of 30 seconds.



**Detection of human eIF4G3/eIF4GII by western blot of immunoprecipitates.** *Samples:* Whole cell lysate (1.0 mg per IP reaction; 20% of IP loaded) from HeLa cells prepared using NETN lysis buffer. *Antibodies:* Affinity purified rabbit anti-eIF4G3/eIF4GII antibody A301-768A (lot A301-768A-1) used for IP at 6 µg per reaction. eIF4G3/eIF4GII was also immunoprecipitated by anti-eIF4G3/eIF4GII antibodies A301-769A and A301-770A.. For blotting immunoprecipitated eIF4G3/eIF4GII, A301-768A was used at 0.04 µg/ml. *Detection:* Chemiluminescence with an exposure time of 3 seconds.