



# SZABO SCANDIC

Part of Europa Biosite

## Produktinformation



Forschungsprodukte & Biochemikalien



Zellkultur & Verbrauchsmaterial



Diagnostik & molekulare Diagnostik



Laborgeräte & Service

Weitere Information auf den folgenden Seiten!  
See the following pages for more information!



### Lieferung & Zahlungsart

siehe unsere [Liefer- und Versandbedingungen](#)

### Zuschläge

- Mindermengenzuschlag
- Trockeneiszuschlag
- Gefahrgutzuschlag
- Expressversand

### SZABO-SCANDIC HandelsgmbH

Quellenstraße 110, A-1100 Wien

T. +43(0)1 489 3961-0

F. +43(0)1 489 3961-7

[mail@szabo-scandic.com](mailto:mail@szabo-scandic.com)

[www.szabo-scandic.com](http://www.szabo-scandic.com)

[linkedin.com/company/szaboscandic](https://www.linkedin.com/company/szaboscandic) 

# PHF8 Antibody

Rabbit Polyclonal

Antigen Affinity Purified

Protein ID CAI41576.1

Catalog No. A301-772A-T

GeneID 23133

Lot No. A301-772A-T-4

<b>APPLICATIONS</b>	WB, IP, IHC, ChIP-Seq
<b>SPECIES REACTIVITY</b>	Human, Mouse
<b>AMOUNT</b>	10 µl
<b>CONCENTRATION</b>	200 µg/ml
<b>STORAGE/SHELF LIFE</b>	2 – 8°C / 1 year from date of receipt
<b>PHYSICAL STATE</b>	Liquid
<b>BUFFER</b>	Tris-buffered Saline containing 0.1% BSA and 0.09% Sodium Azide
<b>ISOTYPE</b>	IgG
<b>ORIGIN</b>	USA
<b>PRODUCTION PROCEDURES</b>	Antibody was affinity purified using an epitope specific to PHF8 immobilized on solid support.

The epitope recognized by A301-772A-T maps to a region between residue 650 and 700 of human PHD finger protein 8 using the numbering given in entry CAI41576.1 (GeneID 23133).

**APPLICATIONS** Centrifuge tube to remove product from lid. Optimal working dilutions should be determined experimentally by the investigator. Prepare working dilution immediately before use.

Western Blot 1:2,000 – 1:10,000

Immunoprecipitation 2 – 10 µg/mg lysate

Immunohistochemistry 1:100 to 1:500. Epitope retrieval with citrate buffer pH6.0 is recommended for FFPE tissue sections.

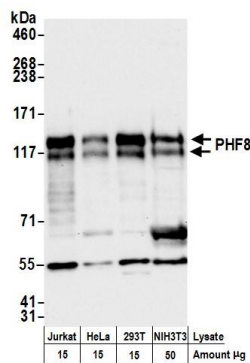
ChIP-Seq ChIP-Seq 10 µg as per Ram O et al., Cell. 2011 Dec 23;147(7):1628–39. Previous lots of this antibody have performed in this application.

**ADDITIONAL INFO** <https://www.bethyl.com/product/A301-772A-T>

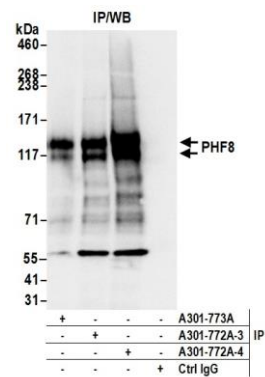
Use the link above to view SDS, a current list of citations, and other product specific information.

IP-western blot protocol: [https://www.bethyl.com/content/protocol\\_IP\\_WB](https://www.bethyl.com/content/protocol_IP_WB)

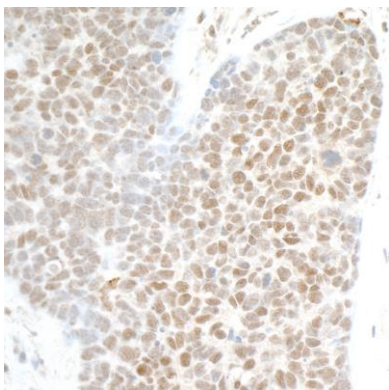
This document certifies that this product has met all of the quality control standards defined by Bethyl Laboratories, Inc.  
Michael Spencer, PhD Date: June 6, 2022



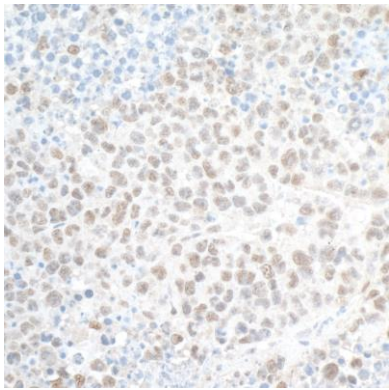
**Detection of human and mouse PHF8 by western blot.**  
*Samples:* Whole cell lysate (15 and 50 µg) from Jurkat, HeLa, HEK293T, and NIH 3T3 cells prepared using NETN lysis buffer. *Antibody:* Affinity purified rabbit anti-PHF8 antibody A301-772A (lot A301-772A-4) used for WB at 0.04 µg/ml. *Detection:* Chemiluminescence with an exposure time of 10 seconds.



**Detection of human PHF8 by western blot of immunoprecipitates.** *Samples:* Whole cell lysate (1.0 mg per IP reaction; 20% of IP loaded) from Jurkat cells prepared using NETN lysis buffer. *Antibodies:* Affinity purified rabbit anti-PHF8 antibody A301-772A (lot A301-772A-4) used for IP at 6 µg per reaction. PHF8 was also immunoprecipitated by a previous lot of this antibody (lot A301-772A-3) and rabbit anti-PHF8 antibody A301-773A. For blotting immunoprecipitated PHF8, A301-772A was used at 0.04 µg/ml. *Detection:* Chemiluminescence with an exposure time of 1 second.



**Detection of human PHF8 by immunohistochemistry.**  
*Samples:* FFPE serial sections of human small cell lung cancer. *Antibody:* Affinity purified rabbit anti-PHF8 (Cat. No. A301-772A lot 4) used at a dilution of 1:200 (1 µg/ml). *Detection:* DAB



**Detection of mouse PHF8 by immunohistochemistry.**  
*Sample:* FFPE section of mouse plasmacytoma. *Antibody:* Affinity purified rabbit anti-PHF8 (Cat. No. A301-772A lot 4) used at a dilution of 1:200 (1 µg/ml). *Detection:* DAB