



SZABO SCANDIC

Part of Europa Biosite

Produktinformation



Forschungsprodukte & Biochemikalien



Zellkultur & Verbrauchsmaterial



Diagnostik & molekulare Diagnostik



Laborgeräte & Service

Weitere Information auf den folgenden Seiten!
See the following pages for more information!



Lieferung & Zahlungsart

siehe unsere [Liefer- und Versandbedingungen](#)

Zuschläge

- Mindermengenzuschlag
- Trockeneiszuschlag
- Gefahrgutzuschlag
- Expressversand

SZABO-SCANDIC HandelsgmbH

Quellenstraße 110, A-1100 Wien

T. +43(0)1 489 3961-0

F. +43(0)1 489 3961-7

mail@szabo-scandic.com

www.szabo-scandic.com

[linkedin.com/company/szaboscandic](https://www.linkedin.com/company/szaboscandic)



PHF8 Antibody

Rabbit Polyclonal

Antigen Affinity Purified

Protein ID CAI41576.1

Catalog No. A301-772A

GeneID 23133

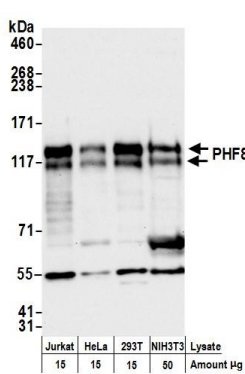
Lot No. A301-772A-4



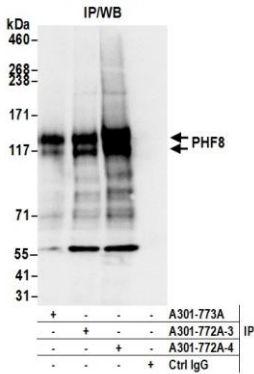
APPLICATIONS	WB, IP, IHC, ChIP-Seq								
SPECIES REACTIVITY	Human, Mouse								
AMOUNT	100 µl								
CONCENTRATION	200 µg/ml								
STORAGE/SHELF LIFE	2 – 8° C / 1 year from date of receipt								
PHYSICAL STATE	Liquid								
BUFFER	Tris-buffered Saline containing 0.1% BSA and 0.09% Sodium Azide								
ISOTYPE	IgG								
ORIGIN	USA								
PRODUCTION PROCEDURES	<p>Antibody was affinity purified using an epitope specific to PHF8 immobilized on solid support.</p> <p>The epitope recognized by A301-772A maps to a region between residue 650 and 700 of human PHD finger protein 8 using the numbering given in entry CAI41576.1 (GeneID 23133).</p> <p>Immunoglobulin concentration was determined by extinction coefficient: absorbance at 280 nm of 1.4 equals 1.0 mg of IgG.</p>								
APPLICATIONS	<p>Centrifuge tube to remove product from lid. Optimal working dilutions should be determined experimentally by the investigator. Prepare working dilution immediately before use.</p> <table><tr><td>Western Blot</td><td>1:2,000 – 1:10,000</td></tr><tr><td>Immunoprecipitation</td><td>2 – 10 µg/mg lysate</td></tr><tr><td>Immunohistochemistry</td><td>1:100 to 1:500. Epitope retrieval with citrate buffer pH6.0 is recommended for FFPE tissue sections.</td></tr><tr><td>ChIP-Seq</td><td>ChIP-Seq 10 µg as per Ram O et al., Cell. 2011 Dec 23;147(7):1628–39. Previous lots of this antibody have performed in this application.</td></tr></table>	Western Blot	1:2,000 – 1:10,000	Immunoprecipitation	2 – 10 µg/mg lysate	Immunohistochemistry	1:100 to 1:500. Epitope retrieval with citrate buffer pH6.0 is recommended for FFPE tissue sections.	ChIP-Seq	ChIP-Seq 10 µg as per Ram O et al., Cell. 2011 Dec 23;147(7):1628–39. Previous lots of this antibody have performed in this application.
Western Blot	1:2,000 – 1:10,000								
Immunoprecipitation	2 – 10 µg/mg lysate								
Immunohistochemistry	1:100 to 1:500. Epitope retrieval with citrate buffer pH6.0 is recommended for FFPE tissue sections.								
ChIP-Seq	ChIP-Seq 10 µg as per Ram O et al., Cell. 2011 Dec 23;147(7):1628–39. Previous lots of this antibody have performed in this application.								
APPLICATION NOTES	<p>Western blot of immunoprecipitates performed using Normal Pig Serum (Cat. No. S100-020), Goat anti-Rabbit Light Chain HRP Conjugate (Cat. No. A120-113P) and 4-8% SDS-PAGE (link to IP-western blot protocol in Additional Info section below).</p> <p>Western blot of lysates performed using standard western blot reagents and 4-8% SDS-PAGE.</p>								
IHC HUMAN CONTROLS	Breast Carcinoma, Ovarian Carcinoma, Prostate Carcinoma, Small Cell Lung Cancer								
IHC MOUSE CONTROLS	Plasmacytoma, Renal Cell Carcinoma, Teratoma								
ADDITIONAL INFO	<p>https://www.bethyl.com/product/A301-772A</p> <p>Use the link above to view SDS, a current list of citations, and other product specific information. IP-western blot protocol https://www.bethyl.com/content/protocol_IP_WB</p>								

This document certifies that this product has met all of the quality control standards defined by Bethyl Laboratories, Inc.
Eric McIntush, PhD | Chief Scientific Officer

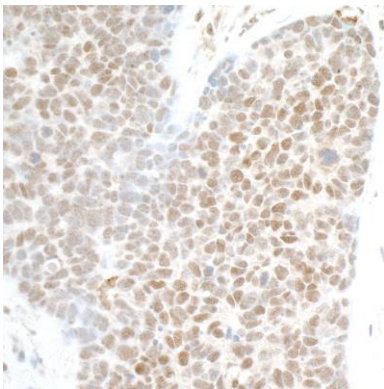
Date: July 18, 2019



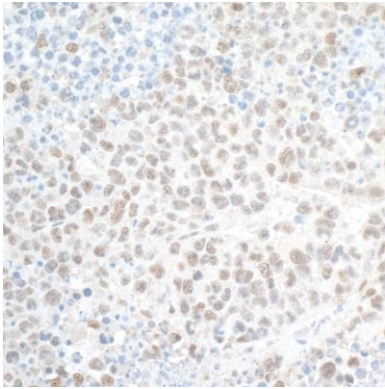
Detection of human and mouse PHF8 by western blot.
Samples: Whole cell lysate (15 and 50 µg) from Jurkat, HeLa, HEK293T, and NIH 3T3 cells prepared using NETN lysis buffer. *Antibody:* Affinity purified rabbit anti-PHF8 antibody A301-772A (lot A301-772A-4) used for WB at 0.04 µg/ml. *Detection:* Chemiluminescence with an exposure time of 10 seconds.



Detection of human PHF8 by western blot of immunoprecipitates. *Samples:* Whole cell lysate (1.0 mg per IP reaction; 20% of IP loaded) from Jurkat cells prepared using NETN lysis buffer. *Antibodies:* Affinity purified rabbit anti-PHF8 antibody A301-772A (lot A301-772A-4) used for IP at 6 µg per reaction. PHF8 was also immunoprecipitated by a previous lot of this antibody (lot A301-772A-3) and rabbit anti-PHF8 antibody A301-773A. For blotting immunoprecipitated PHF8, A301-772A was used at 0.04 µg/ml. *Detection:* Chemiluminescence with an exposure time of 1 second.



Detection of human PHF8 by immunohistochemistry.
Samples: FFPE serial sections of human small cell lung cancer. *Antibody:* Affinity purified rabbit anti- PHF8 (Cat. No. A301-772A lot 4) used at a dilution of 1:200 (1 µg/ml). *Detection:* DAB



Detection of mouse PHF8 by immunohistochemistry.
Sample: FFPE section of mouse plasmacytoma. *Antibody:* Affinity purified rabbit anti- PHF8 (Cat. No. A301-772A lot 4) used at a dilution of 1:200 (1 µg/ml). *Detection:* DAB