



# SZABO SCANDIC

Part of Europa Biosite

## Produktinformation



Forschungsprodukte & Biochemikalien



Zellkultur & Verbrauchsmaterial



Diagnostik & molekulare Diagnostik



Laborgeräte & Service

Weitere Information auf den folgenden Seiten!  
See the following pages for more information!



### Lieferung & Zahlungsart

siehe unsere [Liefer- und Versandbedingungen](#)

### Zuschläge

- Mindermengenzuschlag
- Trockeneiszuschlag
- Gefahrgutzuschlag
- Expressversand

### SZABO-SCANDIC Handels GmbH

Quellenstraße 110, A-1100 Wien

T. +43(0)1 489 3961-0

F. +43(0)1 489 3961-7

[mail@szabo-scandic.com](mailto:mail@szabo-scandic.com)

[www.szabo-scandic.com](http://www.szabo-scandic.com)

[linkedin.com/company/szaboscandic](https://www.linkedin.com/company/szaboscandic)



# eIF4G1 /eIF4GI Antibody

Rabbit Polyclonal

Antigen Affinity Purified	Protein ID	NP_886553.2
Catalog No. A301-775A-T	GeneID	1981
Lot No. A301-775A-T-1		

<b>APPLICATIONS</b>	WB, IP, IHC
<b>SPECIES REACTIVITY</b>	Human
<b>PRESUMED REACTIVITY</b>	Based on 100% sequence identity, this antibody is predicted to react with Rabbit
<b>AMOUNT</b>	10 µl
<b>CONCENTRATION</b>	200 µg/ml
<b>STORAGE/SHELF LIFE</b>	2 – 8°C / 1 year from date of receipt
<b>PHYSICAL STATE</b>	Liquid
<b>BUFFER</b>	Tris-buffered Saline containing 0.1% BSA and 0.09% Sodium Azide
<b>ISOTYPE</b>	IgG
<b>ORIGIN</b>	USA
<b>PRODUCTION PROCEDURES</b>	Antibody was affinity purified using an epitope specific to eIF4G1 /eIF4GI immobilized on solid support.

The epitope recognized by A301-775A-T maps to a region between residue 250 and 300 of human eukaryotic translation initiation factor 4 gamma, 1 using the numbering given in entry NP\_886553.2 (GeneID 1981).

**APPLICATIONS** Centrifuge tube to remove product from lid. Optimal working dilutions should be determined experimentally by the investigator. Prepare working dilution immediately before use.

Western Blot 1:2,000 – 1:10,000

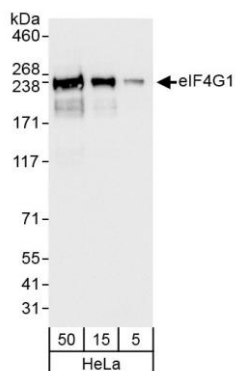
Immunoprecipitation 2 – 5 µg/mg lysate

Immunohistochemistry 1:100 – 1:500. Epitope retrieval with citrate buffer pH 6.0 is recommended for FFPE tissue sections.

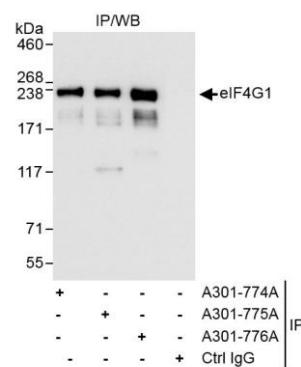
**ADDITIONAL INFO** <https://www.bethyl.com/product/A301-775A-T>

Use the link above to view SDS, a current list of citations, and other product specific information.  
IP-western blot protocol: [https://www.bethyl.com/content/protocol\\_IP\\_WB](https://www.bethyl.com/content/protocol_IP_WB)

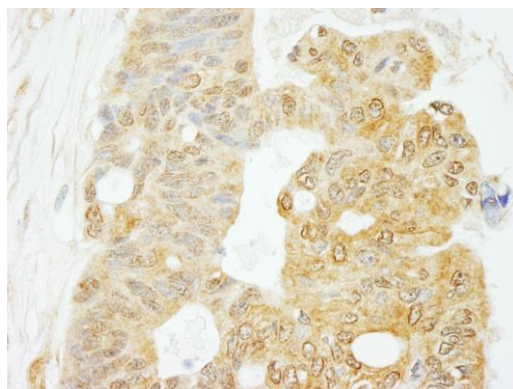
This document certifies that this product has met all of the quality control standards defined by Bethyl Laboratories, Inc.  
Michael Spencer, PhD Date: June 6, 2022



**Detection of human eIF4G1 by western blot.** *Samples:* Whole cell lysate (5, 15 and 50  $\mu$ g) from HeLa cells. *Antibody:* Affinity purified rabbit anti-eIF4G1 antibody A301-775A (lot A301-775A-1) used for WB at 0.04  $\mu$ g/ml. *Detection:* Chemiluminescence with exposure time of 3 seconds.



**Detection of human eIF4G1 by western blot of immunoprecipitates.** *Samples:* Whole cell lysate (1 mg for IP, 20% of IP loaded) from HeLa cells. *Antibody:* Affinity purified rabbit anti-eIF4G1 antibody A301-775A (lot A301-775A-1) used for IP at 3  $\mu$ g/mg lysate. eIF4G1 was also immunoprecipitated by rabbit anti-eIF4G1 antibodies A301-774A and A301-776A, which recognize other epitopes. For blotting immunoprecipitated eIF4G1, A301-775A was used at 1.0  $\mu$ g/ml. *Detection:* Chemiluminescence with exposure time of 1 second.



**Detection of human eIF4G1 by immunohistochemistry.** *Sample:* FFPE section of human ovarian carcinoma. *Antibody:* Affinity purified rabbit anti-eIF4G1 (Cat. No. A301-775A lot 1) used at a dilution of 1:200 (1  $\mu$ g/ml). *Detection:* DAB