



SZABO SCANDIC

Part of Europa Biosite

Produktinformation



Forschungsprodukte & Biochemikalien



Zellkultur & Verbrauchsmaterial



Diagnostik & molekulare Diagnostik



Laborgeräte & Service

Weitere Information auf den folgenden Seiten!
See the following pages for more information!



Lieferung & Zahlungsart

siehe unsere [Liefer- und Versandbedingungen](#)

Zuschläge

- Mindermengenzuschlag
- Trockeneiszuschlag
- Gefahrgutzuschlag
- Expressversand

SZABO-SCANDIC Handels GmbH

Quellenstraße 110, A-1100 Wien

T. +43(0)1 489 3961-0

F. +43(0)1 489 3961-7

mail@szabo-scandic.com

www.szabo-scandic.com

[linkedin.com/company/szaboscandic](https://www.linkedin.com/company/szaboscandic) 

ZCCHC8 Antibody

Rabbit Polyclonal

Antigen Affinity Purified

Protein ID NP_060082.2

Catalog No. A301-805A-T

GeneID 55596

Lot No. A301-805A-T-1

APPLICATIONS	IP, IHC, IHC-IF
SPECIES REACTIVITY	Human
AMOUNT	10 µl
CONCENTRATION	1000 µg/ml
STORAGE/SHELF LIFE	2 – 8°C / 1 year from date of receipt
PHYSICAL STATE	Liquid
BUFFER	Tris-citrate/phosphate buffer, pH 7 to 8 containing 0.09% Sodium Azide
ISOTYPE	IgG
ORIGIN	USA
PRODUCTION PROCEDURES	Antibody was affinity purified using an epitope specific to ZCCHC8 immobilized on solid support.

The epitope recognized by A301-805A-T maps to a region between residue 1 and 50 of human zinc finger, CCHC domain containing 8 using the numbering given in entry NP_060082.2 (GeneID 55596).

Immunoglobulin concentration was determined by extinction coefficient: absorbance at 280 nm of 1.4 equals 1.0 mg of IgG.

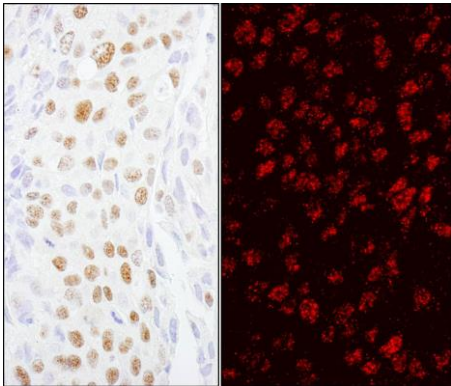
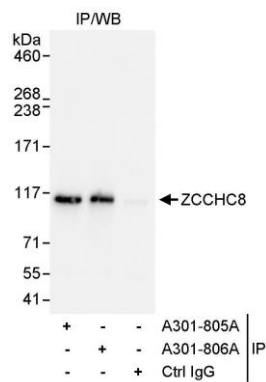
APPLICATIONS Centrifuge tube to remove product from lid. Optimal working dilutions should be determined experimentally by the investigator. Prepare working dilution immediately before use.

Western Blot	Not recommended. Use rabbit anti-ZCCHC8 antibody A301-806A.
Immunoprecipitation	2 – 5 µg/mg lysate
Immunohistochemistry	1:2,000 – 1:10,000. Epitope retrieval with citrate buffer pH 6.0 is recommended for FFPE tissue sections.
Immunofluorescence (IHC)	1:1,000 – 1:5,000

ADDITIONAL INFO <https://www.bethyl.com/product/A301-805A-T>

Use the link above to view SDS, a current list of citations, and other product specific information.
IP-western blot protocol: https://www.bethyl.com/content/protocol_IP_WB

This document certifies that this product has met all of the quality control standards defined by Bethyl Laboratories, Inc.
Michael Spencer, PhD Date: June 6, 2022



Detection of human ZCCHC8 by western blot of immunoprecipitates. *Samples:* Whole cell lysate (1 mg for IP, 20% of IP loaded) from HeLa cells. *Antibody:* Affinity purified rabbit anti-ZCCHC8 antibody A301-805A used for IP at 3 µg/mg lysate. ZCCHC8 was also immunoprecipitated by rabbit anti-ZCCHC8 antibody A301-806A, which recognizes a downstream epitope. For blotting immunoprecipitated ZCCHC8, A301-806A was used at 0.1 µg/ml. *Detection:* Chemiluminescence with an exposure time of 5 seconds.

Detection of human ZCCHC8 by immunohistochemistry. *Sample:* FFPE sections of human breast carcinoma. *Antibody:* Affinity purified rabbit anti-ZCCHC8 (Cat. No. A301-805A Lot1) used at a dilution of 1:5,000 (0.2µg/ml) and 1:2,000 (0.5µg/ml). *Detection:* DAB and Red-fluorescent goat anti-rabbit IgG-heavy and light chain, cross-adsorbed Antibody DyLight® 594 Conjugated used at a dilution of 1:100