



# SZABO SCANDIC

Part of Europa Biosite

## Produktinformation



Forschungsprodukte & Biochemikalien



Zellkultur & Verbrauchsmaterial



Diagnostik & molekulare Diagnostik



Laborgeräte & Service

Weitere Information auf den folgenden Seiten!  
See the following pages for more information!



### Lieferung & Zahlungsart

siehe unsere [Liefer- und Versandbedingungen](#)

### Zuschläge

- Mindermengenzuschlag
- Trockeneiszuschlag
- Gefahrgutzuschlag
- Expressversand

### SZABO-SCANDIC HandelsgmbH

Quellenstraße 110, A-1100 Wien

T. +43(0)1 489 3961-0

F. +43(0)1 489 3961-7

[mail@szabo-scandic.com](mailto:mail@szabo-scandic.com)

[www.szabo-scandic.com](http://www.szabo-scandic.com)

[linkedin.com/company/szaboscandic](https://www.linkedin.com/company/szaboscandic)



# ZCCHC8 Antibody

Rabbit Polyclonal

Antigen Affinity Purified

Protein ID NP\_060082.2

Catalog No. A301-805A

GeneID 55596

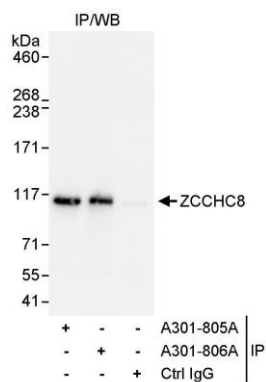
Lot No. A301-805A-1



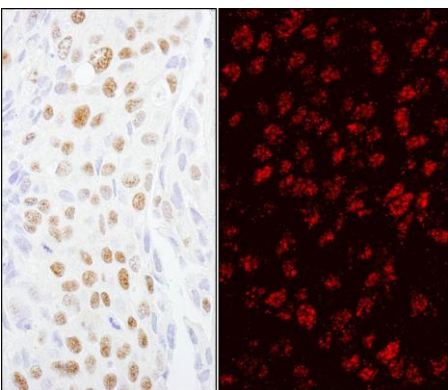
<b>APPLICATIONS</b>	IP, IHC, IHC-IF								
<b>SPECIES REACTIVITY</b>	Human								
<b>AMOUNT</b>	100 µl								
<b>CONCENTRATION</b>	1000 µg/ml								
<b>STORAGE/SHELF LIFE</b>	2 – 8° C / 1 year from date of receipt								
<b>PHYSICAL STATE</b>	Liquid								
<b>BUFFER</b>	Tris-citrate/phosphate buffer, pH 7 to 8 containing 0.09% Sodium Azide								
<b>ISOTYPE</b>	IgG								
<b>ORIGIN</b>	USA								
<b>PRODUCTION PROCEDURES</b>	<p>Antibody was affinity purified using an epitope specific to ZCCHC8 immobilized on solid support.</p> <p>The epitope recognized by A301-805A maps to a region between residue 1 and 50 of human zinc finger, CCHC domain containing 8 using the numbering given in entry NP_060082.2 (GeneID 55596).</p> <p>Immunoglobulin concentration was determined by extinction coefficient: absorbance at 280 nm of 1.4 equals 1.0 mg of IgG.</p>								
<b>APPLICATIONS</b>	<p>Centrifuge tube to remove product from lid. Optimal working dilutions should be determined experimentally by the investigator. Prepare working dilution immediately before use.</p> <table><tr><td>Western Blot</td><td>Not recommended. Use rabbit anti-ZCCHC8 antibody A301-806A.</td></tr><tr><td>Immunoprecipitation</td><td>2 – 5 µg/mg lysate</td></tr><tr><td>Immunohistochemistry</td><td>1:2,000 – 1:10,000. Epitope retrieval with citrate buffer pH 6.0 is recommended for FFPE tissue sections.</td></tr><tr><td>Immunofluorescence (IHC)</td><td>1:1,000 – 1:5,000</td></tr></table>	Western Blot	Not recommended. Use rabbit anti-ZCCHC8 antibody A301-806A.	Immunoprecipitation	2 – 5 µg/mg lysate	Immunohistochemistry	1:2,000 – 1:10,000. Epitope retrieval with citrate buffer pH 6.0 is recommended for FFPE tissue sections.	Immunofluorescence (IHC)	1:1,000 – 1:5,000
Western Blot	Not recommended. Use rabbit anti-ZCCHC8 antibody A301-806A.								
Immunoprecipitation	2 – 5 µg/mg lysate								
Immunohistochemistry	1:2,000 – 1:10,000. Epitope retrieval with citrate buffer pH 6.0 is recommended for FFPE tissue sections.								
Immunofluorescence (IHC)	1:1,000 – 1:5,000								
<b>APPLICATION NOTES</b>	Western blot of immunoprecipitates performed using Normal Pig Serum (Cat. No. S100-020), Goat anti-Rabbit Light Chain HRP Conjugate (Cat. No. A120-113P) and 4-8% SDS-PAGE (link to IP-western blot protocol in Additional Info section below).								
<b>IHC HUMAN CONTROLS</b>	Breast Carcinoma, Colon Carcinoma, Ovarian Carcinoma, Prostate Carcinoma, Stomach Adenocarcinoma								
<b>ADDITIONAL INFO</b>	<p><a href="https://www.bethyl.com/product/A301-805A">https://www.bethyl.com/product/A301-805A</a></p> <p>Use the link above to view SDS, a current list of citations, and other product specific information.</p> <p>IP-western blot protocol: <a href="https://www.bethyl.com/content/protocol_IP_WB">https://www.bethyl.com/content/protocol_IP_WB</a></p>								

This document certifies that this product has met all of the quality control standards defined by Bethyl Laboratories, Inc.  
Eric McIntush, PhD | Chief Scientific Officer

Date: June 21, 2019



**Detection of human ZCCHC8 by western blot of immunoprecipitates.** *Samples:* Whole cell lysate (1 mg for IP, 20% of IP loaded) from HeLa cells. *Antibody:* Affinity purified rabbit anti-ZCCHC8 antibody A301-805A used for IP at 3 µg/mg lysate. ZCCHC8 was also immunoprecipitated by rabbit anti-ZCCHC8 antibody A301-806A, which recognizes a downstream epitope. For blotting immunoprecipitated ZCCHC8, A301-806A was used at 0.1 µg/ml. *Detection:* Chemiluminescence with an exposure time of 5 seconds.



**Detection of human ZCCHC8 by immunohistochemistry.** *Sample:* FFPE sections of human breast carcinoma. *Antibody:* Affinity purified rabbit anti-ZCCHC8 (Cat. No. A301-805A Lot1) used at a dilution of 1:5,000 (0.2µg/ml) and 1:2,000 (0.5µg/ml). *Detection:* DAB and Red-fluorescent goat anti-rabbit IgG-heavy and light chain, cross-adsorbed Antibody DyLight® 594 Conjugated used at a dilution of 1:100