



SZABO SCANDIC

Part of Europa Biosite

Produktinformation



Forschungsprodukte & Biochemikalien



Zellkultur & Verbrauchsmaterial



Diagnostik & molekulare Diagnostik



Laborgeräte & Service

Weitere Information auf den folgenden Seiten!
See the following pages for more information!



Lieferung & Zahlungsart

siehe unsere [Liefer- und Versandbedingungen](#)

Zuschläge

- Mindermengenzuschlag
- Trockeneiszuschlag
- Gefahrgutzuschlag
- Expressversand

SZABO-SCANDIC Handels GmbH

Quellenstraße 110, A-1100 Wien

T. +43(0)1 489 3961-0

F. +43(0)1 489 3961-7

mail@szabo-scandic.com

www.szabo-scandic.com

[linkedin.com/company/szaboscandic](https://www.linkedin.com/company/szaboscandic) 

NF- κ B1 Antibody

Rabbit Polyclonal

Antigen Affinity Purified

Protein ID AAF35232.1

Catalog No. A301-820A

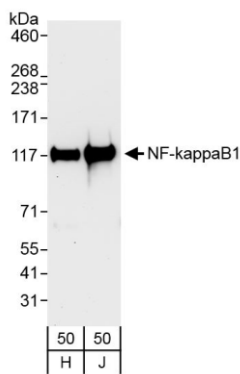
GeneID 4790

Lot No. A301-820A-1



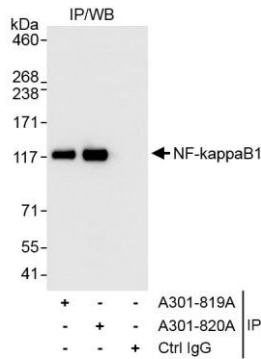
APPLICATIONS	WB, IP
SPECIES REACTIVITY	Human
AMOUNT	100 μ l
CONCENTRATION	200 μ g/ml
STORAGE/SHELF LIFE	2 – 8° C / 1 year from date of receipt
PHYSICAL STATE	Liquid
BUFFER	Tris-buffered Saline containing 0.1% BSA and 0.09% Sodium Azide
ISOTYPE	IgG
ORIGIN	USA
PRODUCTION PROCEDURES	<p>Antibody was affinity purified using an epitope specific to NF-κB1 immobilized on solid support.</p> <p>The epitope recognized by A301-820A maps to a region between residue 918 and 968 of human nuclear factor of kappa light polypeptide gene enhancer in B-cells 1 (p105) using the numbering given in entry AAF35232.1 (GeneID 4790).</p> <p>Immunoglobulin concentration was determined by extinction coefficient: absorbance at 280 nm of 1.4 equals 1.0 mg of IgG.</p>
APPLICATIONS	<p>Centrifuge tube to remove product from lid. Optimal working dilutions should be determined experimentally by the investigator. Prepare working dilution immediately before use.</p> <p>Western Blot 1:2,000 – 1:10,000</p> <p>Immunoprecipitation 2 – 5 μg/mg lysate</p>
APPLICATION NOTES	Western blot of immunoprecipitates performed using Normal Pig Serum (Cat. No. S100-020), Goat anti-Rabbit Light Chain HRP Conjugate (Cat. No. A120-113P) and 4-8% SDS-PAGE (link to IP-western blot protocol in Additional Info section below).
ADDITIONAL INFO	<p>Western blot of lysates performed using standard western blot reagents and 4-8% SDS-PAGE.</p> <p>https://www.bethyl.com/product/A301-820A</p> <p>Use the link above to view SDS, a current list of citations, and other product specific information.</p> <p>IP-western blot protocol https://www.bethyl.com/content/protocol_IP_WB</p>

This document certifies that this product has met all of the quality control standards defined by Bethyl Laboratories, Inc.
Eric McIntush, PhD | Chief Scientific Officer Date: October 22, 2019



Detection of human NF-kappaB1 by western blot.

Samples: Whole cell lysate from HeLa (H; 50 µg) and Jurkat (J; 50 µg) cells. *Antibodies:* Affinity purified rabbit anti-NF-kappaB1 antibody A301-820A (lot A301-820A-1) used for WB at 0.04 µg/ml. *Detection:* Chemiluminescence with exposure time of 1 minute.



Detection of human NF-kappaB1 by western blot of immunoprecipitates.

Samples: Whole cell lysate (1 mg for IP, 20% of IP loaded) from HeLa cells. *Antibodies:* Affinity purified rabbit anti-NF-kappaB1 antibody A301-820A (lot A301-820A-1) used for IP at 3 µg/mg lysate. NF-kappaB1 was also immunoprecipitated by rabbit anti-NF-kappaB1 antibody A301-819A, which recognizes an upstream epitope. For blotting immunoprecipitated NF-kappaB1, A301-820A was used at 0.4 µg/ml. *Detection:* Chemiluminescence with exposure time of 3 seconds.