



SZABO SCANDIC

Part of Europa Biosite

Produktinformation



Forschungsprodukte & Biochemikalien



Zellkultur & Verbrauchsmaterial



Diagnostik & molekulare Diagnostik



Laborgeräte & Service

Weitere Information auf den folgenden Seiten!
See the following pages for more information!



Lieferung & Zahlungsart

siehe unsere [Liefer- und Versandbedingungen](#)

Zuschläge

- Mindermengenzuschlag
- Trockeneiszuschlag
- Gefahrgutzuschlag
- Expressversand

SZABO-SCANDIC HandelsgmbH

Quellenstraße 110, A-1100 Wien

T. +43(0)1 489 3961-0

F. +43(0)1 489 3961-7

mail@szabo-scandic.com

www.szabo-scandic.com

[linkedin.com/company/szaboscandic](https://www.linkedin.com/company/szaboscandic) 

I kappa B-beta Antibody

Rabbit Polyclonal

Antigen Affinity Purified

Protein ID NP_002494.2

Catalog No. A301-828A-T

GeneID 4793

Lot No. A301-828A-T-1

APPLICATIONS WB, IP

SPECIES REACTIVITY Human

AMOUNT 10 µl

CONCENTRATION 200 µg/ml

STORAGE/SHELF LIFE 2 – 8°C / 1 year from date of receipt

PHYSICAL STATE Liquid

BUFFER Tris-buffered Saline containing 0.1% BSA and 0.09% Sodium Azide

ISOTYPE IgG

ORIGIN USA

PRODUCTION PROCEDURES Antibody was affinity purified using an epitope specific to I kappa B-beta immobilized on solid support.

The epitope recognized by A301-828A-T maps to a region between residue 306 and 356 of human nuclear factor of kappa light polypeptide gene enhancer in B-cells inhibitor, beta using the numbering given in entry NP_002494.2 (GeneID 4793).

APPLICATIONS Centrifuge tube to remove product from lid. Optimal working dilutions should be determined experimentally by the investigator. Prepare working dilution immediately before use.

Western Blot 1:2,000 – 1:10,000

Immunoprecipitation 2 – 5 µg/mg lysate

ADDITIONAL INFO <https://www.bethyl.com/product/A301-828A-T>

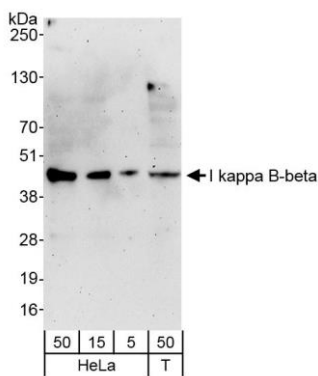
Use the link above to view SDS, a current list of citations, and other product specific information.

IP-western blot protocol: https://www.bethyl.com/content/protocol_IP_WB

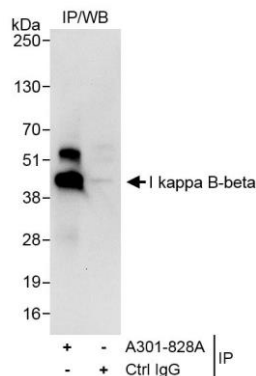
This document certifies that this product has met all of the quality control standards defined by Bethyl Laboratories, Inc.

Michael Spencer, PhD

Date: June 6, 2022



Detection of human I kappa B-beta by western blot.
Samples: Whole cell lysate from HeLa (50 µg) and HEK293T (T; 50 µg) cells. *Antibodies:* Affinity purified rabbit anti-I kappa B-beta antibody A301-828A (lot A301-828A-1) used for WB at 0.04 µg/ml. *Detection:* Chemiluminescence with exposure time of 3 minutes.



Detection of human I kappa B-beta by western blot of immunoprecipitates. *Samples:* Whole cell lysate (1 mg for IP, 20% of IP loaded) from HeLa cells. *Antibodies:* Affinity purified rabbit anti-I kappa B-beta antibody A301-828A (lot A301-828A-1) used for IP at 3 µg/mg lysate. For blotting immunoprecipitated I kappa B-beta, A301-828A was used at 0.4 µg/ml. *Detection:* Chemiluminescence with exposure time of 30 seconds.