



# SZABO SCANDIC

Part of Europa Biosite

## Produktinformation



Forschungsprodukte & Biochemikalien



Zellkultur & Verbrauchsmaterial



Diagnostik & molekulare Diagnostik



Laborgeräte & Service

Weitere Information auf den folgenden Seiten!  
See the following pages for more information!



### Lieferung & Zahlungsart

siehe unsere [Liefer- und Versandbedingungen](#)

### Zuschläge

- Mindermengenzuschlag
- Trockeneiszuschlag
- Gefahrgutzuschlag
- Expressversand

### SZABO-SCANDIC Handels GmbH

Quellenstraße 110, A-1100 Wien

T. +43(0)1 489 3961-0

F. +43(0)1 489 3961-7

[mail@szabo-scandic.com](mailto:mail@szabo-scandic.com)

[www.szabo-scandic.com](http://www.szabo-scandic.com)

[linkedin.com/company/szaboscandic](https://www.linkedin.com/company/szaboscandic) 

# CCDC43 Antibody

Rabbit Polyclonal

Antigen Affinity Purified

Protein ID NP\_653210.2

Catalog No. A301-836A-T

GeneID 124808

Lot No. A301-836A-T-1

---

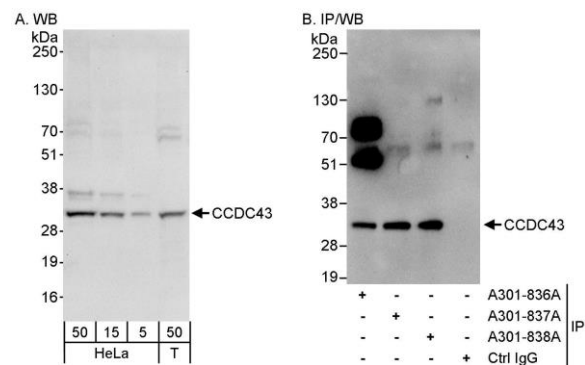
<b>APPLICATIONS</b>	WB
<b>SPECIES REACTIVITY</b>	Human
<b>AMOUNT</b>	10 µl
<b>CONCENTRATION</b>	1000 µg/ml
<b>STORAGE/SHELF LIFE</b>	2 – 8°C / 1 year from date of receipt
<b>PHYSICAL STATE</b>	Liquid
<b>BUFFER</b>	Tris-citrate/phosphate buffer, pH 7 to 8 containing 0.09% Sodium Azide
<b>ISOTYPE</b>	IgG
<b>ORIGIN</b>	USA
<b>PRODUCTION PROCEDURES</b>	Antibody was affinity purified using an epitope specific to CCDC43 immobilized on solid support.

The epitope recognized by A301-836A-T maps to a region between residue 1 and 50 of human coiled-coil domain-containing protein 43 using the numbering given in entry NP\_653210.2 (GeneID 124808).

<b>APPLICATIONS</b>	Centrifuge tube to remove product from lid. Optimal working dilutions should be determined experimentally by the investigator. Prepare working dilution immediately before use.
	Western Blot 1:2,000 – 1:10,000
	Immunoprecipitation Not recommended. Use rabbit anti-CCDC43 antibody A301-837A or A301-838A.

**ADDITIONAL INFO** <https://www.bethyl.com/product/A301-836A-T>  
Use the link above to view SDS, a current list of citations, and other product specific information.

This document certifies that this product has met all of the quality control standards defined by Bethyl Laboratories, Inc.  
Michael Spencer, PhD Date: June 6, 2022



**Detection of human CCDC43 by western blot and immunoprecipitation.** *Samples:* Whole cell lysate from HeLa (50 µg for WB; 1 mg for IP, 20% of IP loaded) and HEK293T (T; 50 µg) cells. *Antibodies:* Affinity purified rabbit anti-CCDC43 antibody A301-836A used for WB at 0.4 µg/ml (A) and 1 µg/ml (B) and used for IP at 3 µg/mg lysate. CCDC43 was also immunoprecipitated by rabbit anti-CCDC43 antibodies A301-837A and A301-838A, which recognize downstream epitopes. *Detection:* Chemiluminescence with exposure times of 10 seconds (A and B).