



SZABO SCANDIC

Part of Europa Biosite

Produktinformation



Forschungsprodukte & Biochemikalien



Zellkultur & Verbrauchsmaterial



Diagnostik & molekulare Diagnostik



Laborgeräte & Service

Weitere Information auf den folgenden Seiten!
See the following pages for more information!



Lieferung & Zahlungsart

siehe unsere [Liefer- und Versandbedingungen](#)

Zuschläge

- Mindermengenzuschlag
- Trockeneiszuschlag
- Gefahrgutzuschlag
- Expressversand

SZABO-SCANDIC Handels GmbH

Quellenstraße 110, A-1100 Wien

T. +43(0)1 489 3961-0

F. +43(0)1 489 3961-7

mail@szabo-scandic.com

www.szabo-scandic.com

[linkedin.com/company/szaboscandic](https://www.linkedin.com/company/szaboscandic) 

GCN1L1 Antibody

Rabbit Polyclonal

Antigen Affinity Purified Protein ID NP_006827.1

Catalog No. A301-843A-T GeneID 10985

Lot No. A301-843A-T-3

APPLICATIONS WB, IP

SPECIES REACTIVITY Human, Mouse, Rat

AMOUNT 10 µl

CONCENTRATION 200 µg/ml

STORAGE/SHELF LIFE 2 – 8°C / 1 year from date of receipt

PHYSICAL STATE Liquid

BUFFER Tris-buffered Saline containing 0.1% BSA and 0.09% Sodium Azide

ISOTYPE IgG

ORIGIN USA

PRODUCTION PROCEDURES Antibody was affinity purified using an epitope specific to GCN1L1 immobilized on solid support.

The epitope recognized by A301-843A-T maps to a region between residue 2621 and 2671 of human general control of amino-acid synthesis 1-like 1 using the numbering given in entry NP_006827.1 (GeneID 10985).

APPLICATIONS Centrifuge tube to remove product from lid. Optimal working dilutions should be determined experimentally by the investigator. Prepare working dilution immediately before use.

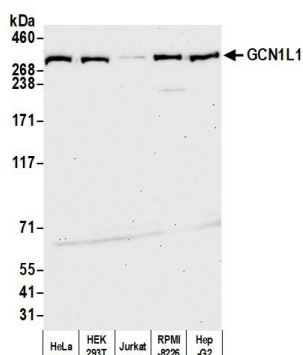
Western Blot 1:2,000 – 1:10,000

Immunoprecipitation 2 – 10 µg/mg lysate

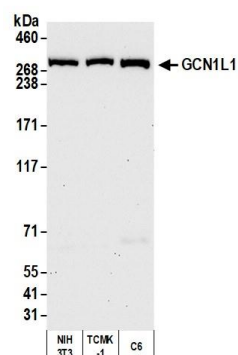
ADDITIONAL INFO <https://www.fortislife.com/p/A301-843A-T>

Use the link above to view SDS, a current list of citations, and other product specific information.

This document certifies that this product has met all of the quality control standards defined by Bethyl Laboratories, Inc.
Michael Spencer, PhD Date: August 8, 2022



Detection of human GCN1L1 by western blot. *Samples:* Whole cell lysate (50 µg) from HeLa, HEK293T, Jurkat, RPMI-8226, and Hep-G2 cells prepared using NETN lysis buffer. *Antibody:* Affinity purified rabbit anti-GCN1L1 antibody A301-843A-T (lot A301-843A-T-3) used for WB at 1:1,000. *Detection:* Chemiluminescence with an exposure time of 30 seconds.



Detection of mouse and rat GCN1L1 by western blot. *Samples:* Whole cell lysate (50 µg) from NIH 3T3, TCMK-1, and C6 cells prepared using NETN lysis buffer. *Antibody:* Affinity purified rabbit anti-GCN1L1 antibody A301-843A-T (lot A301-843A-T-3) used for WB at 1:1,000. *Detection:* Chemiluminescence with an exposure time of 30 seconds.