



# SZABO SCANDIC

Part of Europa Biosite

## Produktinformation



Forschungsprodukte & Biochemikalien



Zellkultur & Verbrauchsmaterial



Diagnostik & molekulare Diagnostik



Laborgeräte & Service

Weitere Information auf den folgenden Seiten!  
See the following pages for more information!



### Lieferung & Zahlungsart

siehe unsere [Liefer- und Versandbedingungen](#)

### Zuschläge

- Mindermengenzuschlag
- Trockeneiszuschlag
- Gefahrgutzuschlag
- Expressversand

### SZABO-SCANDIC HandelsgmbH

Quellenstraße 110, A-1100 Wien

T. +43(0)1 489 3961-0

F. +43(0)1 489 3961-7

[mail@szabo-scandic.com](mailto:mail@szabo-scandic.com)

[www.szabo-scandic.com](http://www.szabo-scandic.com)

[linkedin.com/company/szaboscandic](https://www.linkedin.com/company/szaboscandic)



# GCN1L1 Antibody

Rabbit Polyclonal

Antigen Affinity Purified

Protein ID NP\_006827.1

Catalog No. A301-843A

GeneID 10985

Lot No. A301-843A-3



APPLICATIONS	WB, IP
SPECIES REACTIVITY	Human, Mouse, Rat
AMOUNT	100 µl
CONCENTRATION	200 µg/ml
STORAGE/SHELF LIFE	2 – 8° C / 1 year from date of receipt
PHYSICAL STATE	Liquid
BUFFER	Tris-buffered Saline containing 0.1% BSA and 0.09% Sodium Azide
ISOTYPE	IgG
ORIGIN	USA
PRODUCTION PROCEDURES	Antibody was affinity purified using an epitope specific to GCN1L1 immobilized on solid support.

The epitope recognized by A301-843A maps to a region between residue 2621 and 2671 of human general control of amino-acid synthesis 1-like 1 using the numbering given in entry NP\_006827.1 (GeneID 10985).

Immunoglobulin concentration was determined by extinction coefficient: absorbance at 280 nm of 1.4 equals 1.0 mg of IgG.

**APPLICATIONS** Centrifuge tube to remove product from lid. Optimal working dilutions should be determined experimentally by the investigator. Prepare working dilution immediately before use.

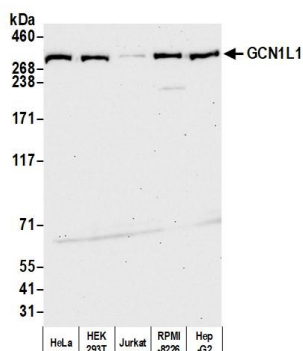
Western Blot 1:2,000 – 1:10,000

Immunoprecipitation 2 – 10 µg/mg lysate

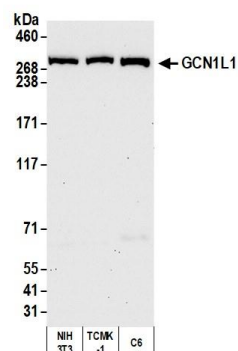
**ADDITIONAL INFO** <https://www.bethyl.com/product/A301-843A>

Use the link above to view SDS, a current list of citations, and other product specific information.  
IP-western blot protocol: [https://www.bethyl.com/content/protocol\\_IP\\_WB](https://www.bethyl.com/content/protocol_IP_WB)

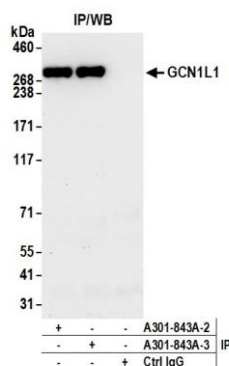
This document certifies that this product has met all of the quality control standards defined by Bethyl Laboratories, Inc.  
Eric McIntush, PhD | Chief Scientific Officer Date: October 20, 2020



**Detection of human GCN1L1 by western blot.** *Samples:* Whole cell lysate (50 µg) from HeLa, HEK293T, Jurkat, RPMI-8226, and Hep-G2 cells prepared using NETN lysis buffer. *Antibody:* Affinity purified rabbit anti-GCN1L1 antibody A301-843A (lot A301-843A-3) used for WB at 0.04 µg/ml. *Detection:* Chemiluminescence with an exposure time of 30 seconds.



**Detection of mouse and rat GCN1L1 by western blot.** *Samples:* Whole cell lysate (50 µg) from NIH 3T3, TCMK-1, and C6 cells prepared using NETN lysis buffer. *Antibody:* Affinity purified rabbit anti-GCN1L1 antibody A301-843A (lot A301-843A-3) used for WB at 0.04 µg/ml. *Detection:* Chemiluminescence with an exposure time of 30 seconds.



**Detection of human GCN1L1 by western blot of immunoprecipitates.** *Samples:* Whole cell lysate (1.0 mg per IP reaction; 20% of IP loaded) from HeLa cells prepared using NETN lysis buffer. *Antibodies:* Affinity purified rabbit anti-GCN1L1 antibody A301-843A (lot A301-843A-3) used for IP at 6 µg per reaction. GCN1L1 was also immunoprecipitated by a previous lot of this antibody (lot A301-843A). For blotting immunoprecipitated GCN1L1, A301-843A was used at 0.04 µg/ml. *Detection:* Chemiluminescence with an exposure time of 30 seconds.