



SZABO SCANDIC

Part of Europa Biosite

Produktinformation



Forschungsprodukte & Biochemikalien



Zellkultur & Verbrauchsmaterial



Diagnostik & molekulare Diagnostik



Laborgeräte & Service

Weitere Information auf den folgenden Seiten!
See the following pages for more information!



Lieferung & Zahlungsart

siehe unsere [Liefer- und Versandbedingungen](#)

Zuschläge

- Mindermengenzuschlag
- Trockeneiszuschlag
- Gefahrgutzuschlag
- Expressversand

SZABO-SCANDIC HandelsgmbH

Quellenstraße 110, A-1100 Wien

T. +43(0)1 489 3961-0

F. +43(0)1 489 3961-7

mail@szabo-scandic.com

www.szabo-scandic.com

[linkedin.com/company/szaboscandic](https://www.linkedin.com/company/szaboscandic) 

Phospho Histone H3 (S10) Antibody

Rabbit Polyclonal

Antigen Affinity Purified

Protein ID NP_003520.1

Catalog No. A301-844A

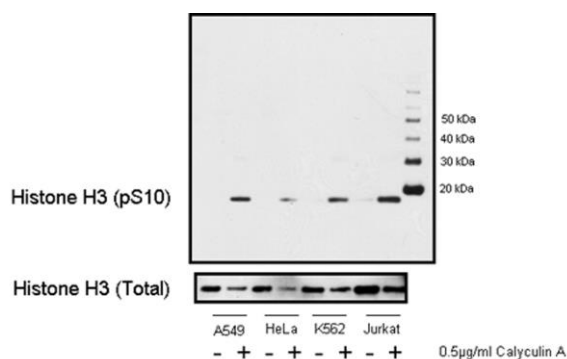
GeneID 8350

Lot No. A301-844A-1

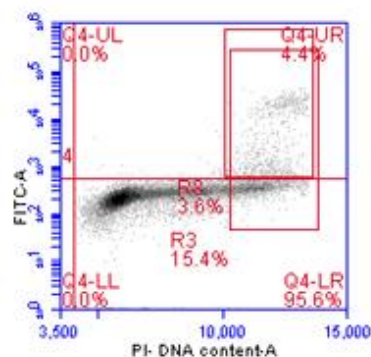


APPLICATIONS	WB, IHC, ICC-IF, F								
SPECIES REACTIVITY	Human, Mouse								
PRESUMED REACTIVITY	Based on 100% sequence identity, this antibody is predicted to react with Rat, D. melanogaster, Zebrafish, X. laevis, X. tropicalis, Chicken, Bovine, Rabbit, Pig and Orangutan								
AMOUNT	100 µl								
CONCENTRATION	200 µg/ml								
STORAGE/SHELF LIFE	2 – 8° C / 1 year from date of receipt								
PHYSICAL STATE	Liquid								
BUFFER	Tris-buffered Saline containing 0.1% BSA and 0.09% Sodium Azide								
ISOTYPE	IgG								
ORIGIN	USA								
PRODUCTION PROCEDURES	<p>Antibody was affinity purified using an epitope specific to Phospho Histone H3 (Ser10) immobilized on solid support. Immunogen for A301-844A was a synthetic phosphorylated peptide, which represented a portion of human Histone H3 surrounding serine 10 according to the numbering given in entry NP_003520.1 (GeneID 8350).</p> <p>Immunoglobulin concentration was determined by extinction coefficient: absorbance at 280 nm of 1.4 equals 1.0 mg of IgG.</p>								
APPLICATIONS	<p>Centrifuge tube to remove product from lid. Optimal working dilutions should be determined experimentally by the investigator. Prepare working dilution immediately before use.</p> <table><tr><td>Western Blot</td><td>1:5,000 – 1:10,000</td></tr><tr><td>Immunohistochemistry</td><td>1:2,000 – 1:10,000. Epitope retrieval with citrate buffer pH 6.0 is recommended for FFPE tissue sections.</td></tr><tr><td>Immunofluorescence (ICC)</td><td>1:2,000 – 1:10,000. Formaldehyde fixation and permeabilization with Triton-X 100 is recommended. Acetone fixation may adversely effect staining.</td></tr><tr><td>Flow Cytometry</td><td>0.4 µg per 1 X 10⁶ cells in a 150 µl volume</td></tr></table>	Western Blot	1:5,000 – 1:10,000	Immunohistochemistry	1:2,000 – 1:10,000. Epitope retrieval with citrate buffer pH 6.0 is recommended for FFPE tissue sections.	Immunofluorescence (ICC)	1:2,000 – 1:10,000. Formaldehyde fixation and permeabilization with Triton-X 100 is recommended. Acetone fixation may adversely effect staining.	Flow Cytometry	0.4 µg per 1 X 10 ⁶ cells in a 150 µl volume
Western Blot	1:5,000 – 1:10,000								
Immunohistochemistry	1:2,000 – 1:10,000. Epitope retrieval with citrate buffer pH 6.0 is recommended for FFPE tissue sections.								
Immunofluorescence (ICC)	1:2,000 – 1:10,000. Formaldehyde fixation and permeabilization with Triton-X 100 is recommended. Acetone fixation may adversely effect staining.								
Flow Cytometry	0.4 µg per 1 X 10 ⁶ cells in a 150 µl volume								
APPLICATION NOTES	Western blot of lysates performed using standard western blot reagents and 4–12% SDS-PAGE.								
IHC HUMAN CONTROLS	Colon Carcinoma, Ovarian Carcinoma, HeLa Cells								
IHC MOUSE CONTROLS	Squamous Cell Carcinoma								
ADDITIONAL INFO	<p>https://www.bethyl.com/product/A301-844A</p> <p>Use the link above to view SDS, a current list of citations, and other product specific information.</p>								

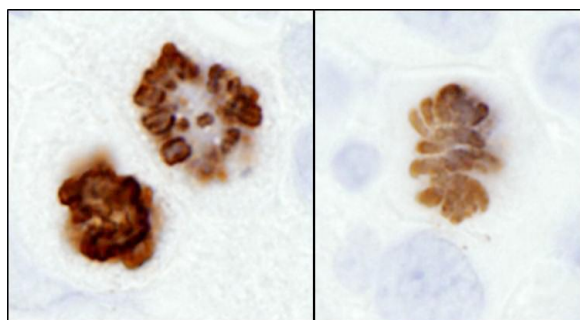
This document certifies that this product has met all of the quality control standards defined by Bethyl Laboratories, Inc.
Eric McIntush, PhD | Chief Scientific Officer Date: June 21, 2019



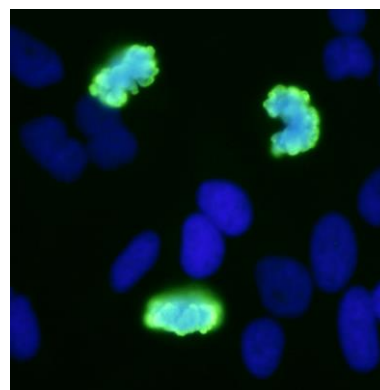
Detection of human Phospho Histone H3 (pS10) by western blot. A-549, HeLa, K-562, and Jurkat cell lines were stimulated with 0.5 µg/ml of Calyculin A at 37°C, 5% CO₂ for 15 minutes. Cells were subsequently lysed and 1 µg of appropriate cell lysates were loaded into respective wells. Western blot was performed using affinity purified rabbit anti-Histone H3 (pS10) antibody A301-844A (20 ng/ml) and affinity purified rabbit anti-Histone H3 antibody (1 µg/ml; Cat. No. A300-822A). Western blots were developed utilizing chemiluminescence with an exposure time of 30 seconds.



Detection of Phospho Histone H3 (pS10). Asynchronous Jurkat cells were fixed in 1.5% PFA and permeabilized in 90% methanol. 1×10^6 cells were stained with 0.4 µg anti-phospho Histone H3 (S10) [A301-844A] in a 150 µl reaction.



Detection of human and mouse Histone H3 (S10) by immunohistochemistry. *Sample:* FFPE section of human colon carcinoma (left) and mouse squamous cell carcinoma (right). *Antibody:* Affinity purified rabbit anti-Phospho Histone H3 (S10) (Cat. No. A301-844A Lot1) used at a dilution of 1:2,500 (0.08 µg/ml). *Detection:* DAB



Detection of human Phospho Histone H3 (S10) by immunocytochemistry. *Samples:* NBF-fixed asynchronous HeLa cells. *Antibody:* Affinity purified rabbit anti-Phospho Histone H3 (S10) (Cat. No. A301-844A Lot1) used at a dilution of 1:2,500 (0.08 µg/ml). *Detection:* Green fluorescent goat antirabbit IgG-FITC conjugated (Cat. No. A120-101F) used at a dilution of 1:100.