



# SZABO SCANDIC

Part of Europa Biosite

## Produktinformation



Forschungsprodukte & Biochemikalien



Zellkultur & Verbrauchsmaterial



Diagnostik & molekulare Diagnostik



Laborgeräte & Service

Weitere Information auf den folgenden Seiten!  
See the following pages for more information!



### Lieferung & Zahlungsart

siehe unsere [Liefer- und Versandbedingungen](#)

### Zuschläge

- Mindermengenzuschlag
- Trockeneiszuschlag
- Gefahrgutzuschlag
- Expressversand

### SZABO-SCANDIC HandelsgmbH

Quellenstraße 110, A-1100 Wien

T. +43(0)1 489 3961-0

F. +43(0)1 489 3961-7

[mail@szabo-scandic.com](mailto:mail@szabo-scandic.com)

[www.szabo-scandic.com](http://www.szabo-scandic.com)

[linkedin.com/company/szaboscandic](https://www.linkedin.com/company/szaboscandic) 

# UBE2O Antibody

Rabbit Polyclonal

Antigen Affinity Purified	RefSeq ID	NP_071349.2
Catalog No. A301-873A-T	Uniprot ID	Q9C0C9
Lot No. 4	GeneID	63893

<b>APPLICATIONS</b>	WB, IP
<b>SPECIES REACTIVITY</b>	Human, Mouse
<b>AMOUNT</b>	10 µl
<b>CONCENTRATION</b>	200 µg/ml
<b>STORAGE/SHELF LIFE</b>	2 – 8°C / 1 year from date of receipt
<b>PHYSICAL STATE</b>	Liquid
<b>BUFFER</b>	Tris-buffered Saline containing 0.1% BSA and 0.09% Sodium Azide
<b>ISOTYPE</b>	IgG
<b>ORIGIN</b>	USA
<b>PRODUCTION PROCEDURES</b>	Antibody was affinity purified using an epitope specific to UBE2O immobilized on solid support.

The epitope recognized by A301-873A-T maps to a region between residue 725 and 775 of human ubiquitin-conjugating enzyme E2O using the numbering given in entry NP\_071349.2 (GeneID 63893).

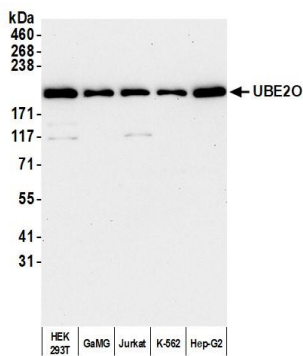
**APPLICATIONS** Centrifuge tube to remove product from lid. Optimal working dilutions should be determined experimentally by the investigator. Prepare working dilution immediately before use.

Western Blot	1:2,000 – 1:10,000
Immunoprecipitation	2 – 10 µg/mg lysate

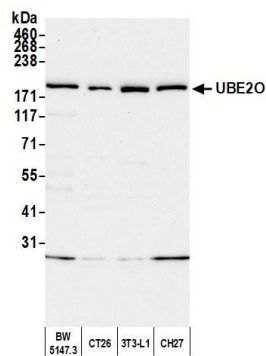
**ADDITIONAL INFO** <https://www.fortislifesciences.com/p/A301-873A-T>

Use the link above to view SDS, a current list of citations, and other product specific information.

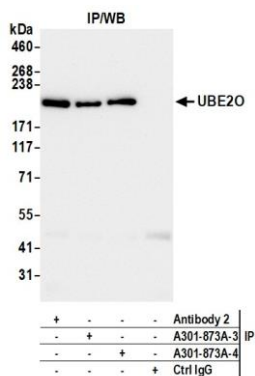
This document certifies that this product has met all of the quality control standards defined by Bethyl Laboratories, Inc.  
Michael Spencer, PhD Date: October 5, 2023



**Detection of human UBE2O by western blot.** *Samples:* Whole cell lysate (25 µg) from HEK293T, GaMG, Jurkat, K-562, and Hep-G2 cells prepared using NETN lysis buffer. *Antibody:* Affinity purified rabbit anti-UBE2O antibody (A301-873A lot 4) used for WB at 0.04 µg/ml. *Detection:* Chemiluminescence with an exposure time of 75 seconds.



**Detection of mouse UBE2O by western blot.** *Samples:* Whole cell lysate (50 µg) from BW5147.3, CT26, 3T3-L1, and CH27 cells prepared using NETN lysis buffer. *Antibody:* Affinity purified rabbit anti-UBE2O antibody (A301-873A lot 4) used for WB at 0.1 µg/ml. *Detection:* Chemiluminescence with an exposure time of 30 seconds.



**Detection of human UBE2O by western blot of immunoprecipitates.** *Samples:* Whole cell lysate (1.0 mg per IP reaction; 20% of IP loaded) from HEK293T cells prepared using NETN lysis buffer. *Antibodies:* Affinity purified rabbit anti-UBE2O antibody (A301-873A lot 4) used for IP at 6 µg per reaction. UBE2O was also immunoprecipitated by a previous lot of this antibody (A301-873A lot 3) and a second antibody against a different epitope of UBE2O (Antibody 2). For blotting immunoprecipitated UBE2O, A301-873A was used at 0.1 µg/ml. *Detection:* Chemiluminescence with an exposure time of 10 seconds.