



SZABO SCANDIC

Part of Europa Biosite

Produktinformation



Forschungsprodukte & Biochemikalien



Zellkultur & Verbrauchsmaterial



Diagnostik & molekulare Diagnostik



Laborgeräte & Service

Weitere Information auf den folgenden Seiten!
See the following pages for more information!



Lieferung & Zahlungsart

siehe unsere [Liefer- und Versandbedingungen](#)

Zuschläge

- Mindermengenzuschlag
- Trockeneiszuschlag
- Gefahrgutzuschlag
- Expressversand

SZABO-SCANDIC Handels GmbH

Quellenstraße 110, A-1100 Wien

T. +43(0)1 489 3961-0

F. +43(0)1 489 3961-7

mail@szabo-scandic.com

www.szabo-scandic.com

[linkedin.com/company/szaboscandic](https://www.linkedin.com/company/szaboscandic) 

ZNF326 Antibody

Rabbit Polyclonal

Antigen Affinity Purified

Protein ID NP_892021.1

Catalog No. A301-880A

GeneID 284695

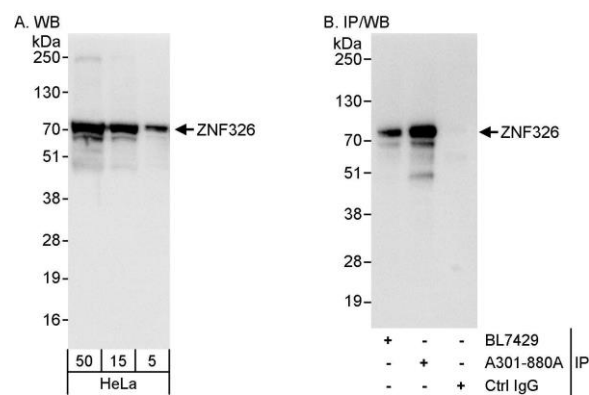
Lot No. A301-880A-1



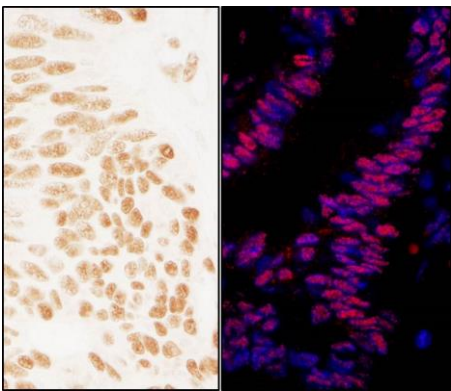
APPLICATIONS	WB, IP, IHC, IHC-IF								
SPECIES REACTIVITY	Human								
PRESUMED REACTIVITY	Based on 100% sequence identity, this antibody is predicted to react with Orangutan								
AMOUNT	100 µl								
CONCENTRATION	200 µg/ml								
STORAGE/SHELF LIFE	2 – 8° C / 1 year from date of receipt								
PHYSICAL STATE	Liquid								
BUFFER	Tris-buffered Saline containing 0.1% BSA and 0.09% Sodium Azide								
ISOTYPE	IgG								
ORIGIN	USA								
PRODUCTION PROCEDURES	<p>Antibody was affinity purified using an epitope specific to ZNF326 immobilized on solid support.</p> <p>The epitope recognized by A301-880A maps to a region between residue 532 and 582 of human zinc finger protein 326 using the numbering given in entry NP_892021.1 (GeneID 284695).</p> <p>Immunoglobulin concentration was determined by extinction coefficient: absorbance at 280 nm of 1.4 equals 1.0 mg of IgG.</p>								
APPLICATIONS	<p>Centrifuge tube to remove product from lid. Optimal working dilutions should be determined experimentally by the investigator. Prepare working dilution immediately before use.</p> <table><tr><td>Western Blot</td><td>1:1,000 – 1:5,000</td></tr><tr><td>Immunoprecipitation</td><td>2 – 5 µg/mg lysate</td></tr><tr><td>Immunohistochemistry</td><td>1:500 – 1:2,000. Epitope retrieval with citrate buffer pH 6.0 is recommended for FFPE tissue sections.</td></tr><tr><td>Immunofluorescence (IHC)</td><td>1:250 – 1:1,000</td></tr></table>	Western Blot	1:1,000 – 1:5,000	Immunoprecipitation	2 – 5 µg/mg lysate	Immunohistochemistry	1:500 – 1:2,000. Epitope retrieval with citrate buffer pH 6.0 is recommended for FFPE tissue sections.	Immunofluorescence (IHC)	1:250 – 1:1,000
Western Blot	1:1,000 – 1:5,000								
Immunoprecipitation	2 – 5 µg/mg lysate								
Immunohistochemistry	1:500 – 1:2,000. Epitope retrieval with citrate buffer pH 6.0 is recommended for FFPE tissue sections.								
Immunofluorescence (IHC)	1:250 – 1:1,000								
APPLICATION NOTES	<p>Western blot of immunoprecipitates performed using Normal Pig Serum (Cat. No. S100-020), Goat anti-Rabbit Light Chain HRP Conjugate (Cat. No. A120-113P) and 4-20% SDS-PAGE (link to IP-western blot protocol in Additional Info section below).</p> <p>Western blot of lysates performed using standard western blot reagents and 4-20% SDS-PAGE.</p>								
IHC HUMAN CONTROLS	Breast Carcinoma, Colon Carcinoma, Ovarian Carcinoma, Prostate Carcinoma, Stomach Adenocarcinoma								
ADDITIONAL INFO	<p>https://www.bethyl.com/product/A301-880A</p> <p>Use the link above to view SDS, a current list of citations, and other product specific information.</p> <p>IP-western blot protocol: https://www.bethyl.com/content/protocol_IP_WB</p>								

This document certifies that this product has met all of the quality control standards defined by Bethyl Laboratories, Inc.
Eric McIntush, PhD | Chief Scientific Officer

Date: June 21, 2019



Detection of human ZNF326 by western blot and immunoprecipitation. *Samples:* Whole cell lysate (5, 15 and 50 μ g for WB; 1 mg for IP, 20% of IP loaded) from HeLa cells. *Antibodies:* Affinity purified rabbit anti-ZNF326 antibody A301-880A used for WB at 0.04 μ g/ml (A) and 0.1 μ g/ml (B) and used for IP at 3 μ g/mg lysate. ZNF326 was also immunoprecipitated by rabbit anti-ZNF326 antibody BL7429, which recognizes an upstream epitope. *Detection:* Chemiluminescence with exposure times of 1 second (A) and 3 seconds (B).



Detection of human ZNF326 by immunohistochemistry. *Sample:* FFPE sections of human ovarian carcinoma (left) and colon carcinoma (right). *Antibody:* Affinity purified rabbit anti- ZNF326 (Cat. No. A301-880A Lot1) used at a dilution of 1:1,000 (0.2 μ g/ml) and 1:400 (0.5 μ g/ml). *Detection:* DAB and Red-fluorescent goat anti-rabbit IgG-heavy and light chain, cross-adsorbed Antibody DyLight® 594 Conjugated used at a dilution of 1:100