



SZABO SCANDIC

Part of Europa Biosite

Produktinformation



Forschungsprodukte & Biochemikalien



Zellkultur & Verbrauchsmaterial



Diagnostik & molekulare Diagnostik



Laborgeräte & Service

Weitere Information auf den folgenden Seiten!
See the following pages for more information!



Lieferung & Zahlungsart

siehe unsere [Liefer- und Versandbedingungen](#)

Zuschläge

- Mindermengenzuschlag
- Trockeneiszuschlag
- Gefahrgutzuschlag
- Expressversand

SZABO-SCANDIC HandelsgmbH

Quellenstraße 110, A-1100 Wien

T. +43(0)1 489 3961-0

F. +43(0)1 489 3961-7

mail@szabo-scandic.com

www.szabo-scandic.com

[linkedin.com/company/szaboscandic](https://www.linkedin.com/company/szaboscandic) 

SOS2 Antibody

Rabbit Polyclonal

Antigen Affinity Purified

Protein ID NP_008870.2

Catalog No. A301-893A-T

GeneID 6655

Lot No. A301-893A-T-3

APPLICATIONS	WB, IP
SPECIES REACTIVITY	Human
PRESUMED REACTIVITY	Based on 100% sequence identity, this antibody is predicted to react with Mouse
AMOUNT	10 µl
CONCENTRATION	1000 µg/ml
STORAGE/SHELF LIFE	2 – 8°C / 1 year from date of receipt
PHYSICAL STATE	Liquid
BUFFER	Tris-citrate/phosphate buffer, pH 7 to 8 containing 0.09% Sodium Azide
ISOTYPE	IgG
ORIGIN	USA
PRODUCTION PROCEDURES	Antibody was affinity purified using an epitope specific to SOS2 immobilized on solid support.

The epitope recognized by A301-893A-T maps to a region between residue 1282 and 1332 of human son of sevenless ortholog 2 using the numbering given in entry NP_008870.2 (GeneID 6655).

APPLICATIONS Centrifuge tube to remove product from lid. Optimal working dilutions should be determined experimentally by the investigator. Prepare working dilution immediately before use.

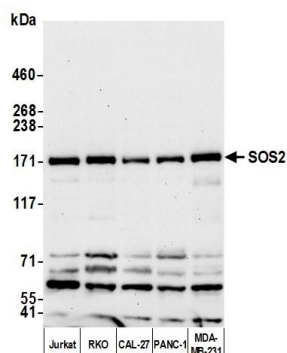
Western Blot 1:2,000 – 1:10,000

Immunoprecipitation 2 – 10 µg/mg lysate

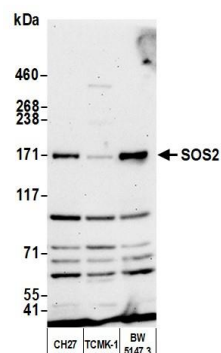
ADDITIONAL INFO <https://www.bethyl.com/product/A301-893A-T>

Use the link above to view SDS, a current list of citations, and other product specific information. IP-western blot protocol: https://www.bethyl.com/content/protocol_IP_WB

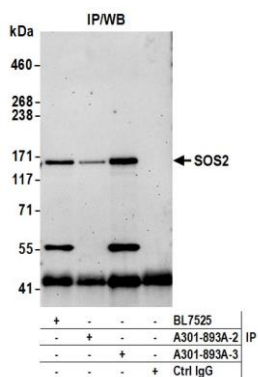
This document certifies that this product has met all of the quality control standards defined by Bethyl Laboratories, Inc.
Michael Spencer, PhD Date: June 6, 2022



Detection of human SOS2 by western blot. *Samples:* Whole cell lysate (25 µg) from Jurkat, RKO, CAL-27, PANC-1, and MDA-MB-231 cells prepared using NETN lysis buffer. *Antibody:* Affinity purified rabbit anti-SOS2 antibody (A301-893A lot 3) used for WB at 0.4 µg/ml. *Detection:* Chemiluminescence with an exposure time of



Detection of mouse SOS2 by western blot. *Samples:* Whole cell lysate (25 µg) from CH27, TCMK-1, and BW5147.3 cells prepared using NETN lysis buffer. *Antibody:* Affinity purified rabbit anti-SOS2 antibody (A301-893A lot 3) used for WB at 0.4 µg/ml. *Detection:* Chemiluminescence with an exposure time of 30 seconds.



Detection of human SOS2 by western blot of immunoprecipitates. *Samples:* Whole cell lysate (1.0 mg per IP reaction; 20% of IP loaded) from Jurkat cells prepared using NETN lysis buffer. *Antibodies:* Affinity purified rabbit anti-SOS2 antibody (A301-893A lot 3) used for IP at 6 µg per reaction. SOS2 was also immunoprecipitated by a previous lot of this antibody (A301-893A lot 2) and a second antibody against a different epitope of SOS2 (BL7525). For blotting immunoprecipitated SOS2, A301-893A was used at 0.4 µg/ml. *Detection:* Chemiluminescence with an exposure time of 75 seconds.