



SZABO SCANDIC

Part of Europa Biosite

Produktinformation



Forschungsprodukte & Biochemikalien



Zellkultur & Verbrauchsmaterial



Diagnostik & molekulare Diagnostik



Laborgeräte & Service

Weitere Information auf den folgenden Seiten!
See the following pages for more information!



Lieferung & Zahlungsart

siehe unsere [Liefer- und Versandbedingungen](#)

Zuschläge

- Mindermengenzuschlag
- Trockeneiszuschlag
- Gefahrgutzuschlag
- Expressversand

SZABO-SCANDIC HandelsgmbH

Quellenstraße 110, A-1100 Wien

T. +43(0)1 489 3961-0

F. +43(0)1 489 3961-7

mail@szabo-scandic.com

www.szabo-scandic.com

[linkedin.com/company/szaboscandic](https://www.linkedin.com/company/szaboscandic) 

RENT1 Antibody

Rabbit Polyclonal

Antigen Affinity Purified

Protein ID NP_002902.2

Catalog No. A301-902A-T

GeneID 5976

Lot No. A301-902A-T-3

APPLICATIONS	WB, IP
SPECIES REACTIVITY	Human, Mouse
AMOUNT	10 µl
CONCENTRATION	200 µg/ml
STORAGE/SHELF LIFE	2 – 8°C / 1 year from date of receipt
PHYSICAL STATE	Liquid
BUFFER	Tris-buffered Saline containing 0.1% BSA and 0.09% Sodium Azide
ISOTYPE	IgG
ORIGIN	USA
PRODUCTION PROCEDURES	Antibody was affinity purified using an epitope specific to RENT1 immobilized on solid support.

The epitope recognized by A301-902A-T maps to a region between residue 1079 and 1129 of human regulator of nonsense transcripts 1 using the numbering given in entry NP_002902.2 (GeneID 5976).

APPLICATIONS Centrifuge tube to remove product from lid. Optimal working dilutions should be determined experimentally by the investigator. Prepare working dilution immediately before use.

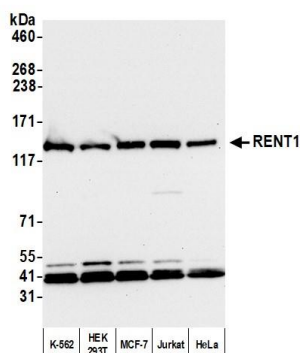
Western Blot 1:2,000 – 1:10,000

Immunoprecipitation 2 – 10 µg/mg lysate

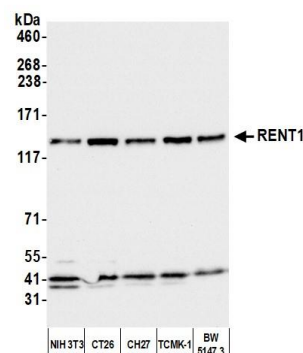
ADDITIONAL INFO <https://www.bethyl.com/product/A301-902A-T>

Use the link above to view SDS, a current list of citations, and other product specific information.
IP-western blot protocol: https://www.bethyl.com/content/protocol_IP_WB

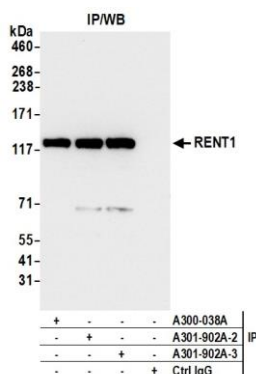
This document certifies that this product has met all of the quality control standards defined by Bethyl Laboratories, Inc.
Michael Spencer, PhD Date: June 6, 2022



Detection of human RENT1 by western blot. *Samples:* Whole cell lysate (50 µg) from K-562, HEK293T, MCF-7, Jurkat, and HeLa cells prepared using NETN lysis buffer. *Antibody:* Affinity purified rabbit anti-RENT1 antibody (A301-902A lot 3) used for WB at 0.04 µg/ml. *Detection:* Chemiluminescence with an exposure time of 10 seconds.



Detection of mouse RENT1 by western blot. *Samples:* Whole cell lysate (50 µg) from NIH 3T3, CT26, CH27, TCMK-1, and BW5147.3 cells prepared using NETN lysis buffer. *Antibody:* Affinity purified rabbit anti-RENT1 antibody (A301-902A lot 3) used for WB at 0.04 µg/ml. *Detection:* Chemiluminescence with an exposure time of 3 seconds.



Detection of human RENT1 by western blot of immunoprecipitates. *Samples:* Whole cell lysate (1.0 mg per IP reaction; 10% of IP loaded) from HEK293T cells prepared using NETN lysis buffer. *Antibodies:* Affinity purified rabbit anti-RENT1 antibody (A301-902A lot 3) used for IP at 4 µg per reaction. RENT1 was also immunoprecipitated by a previous lot of this antibody (A301-902A lot 2) and a second antibody against a different epitope of RENT1 (A300-038A). For blotting immunoprecipitated RENT1, A301-902A was used at 0.04 µg/ml. *Detection:* Chemiluminescence with an exposure time of 3 seconds.