



SZABO SCANDIC

Part of Europa Biosite

Produktinformation



Forschungsprodukte & Biochemikalien



Zellkultur & Verbrauchsmaterial



Diagnostik & molekulare Diagnostik



Laborgeräte & Service

Weitere Information auf den folgenden Seiten!
See the following pages for more information!



Lieferung & Zahlungsart

siehe unsere [Liefer- und Versandbedingungen](#)

Zuschläge

- Mindermengenzuschlag
- Trockeneiszuschlag
- Gefahrgutzuschlag
- Expressversand

SZABO-SCANDIC Handels GmbH

Quellenstraße 110, A-1100 Wien

T. +43(0)1 489 3961-0

F. +43(0)1 489 3961-7

mail@szabo-scandic.com

www.szabo-scandic.com

[linkedin.com/company/szaboscandic](https://www.linkedin.com/company/szaboscandic)



RENT1 Antibody

Rabbit Polyclonal

Antigen Affinity Purified

Protein ID NP_002902.2

Catalog No. A301-902A

GeneID 5976

Lot No. A301-902A-3

APPLICATIONS	WB, IP
SPECIES REACTIVITY	Human, Mouse
AMOUNT	100 µl
CONCENTRATION	200 µg/ml
STORAGE/SHELF LIFE	2 – 8°C / 1 year from date of receipt
PHYSICAL STATE	Liquid
BUFFER	Tris-buffered Saline containing 0.1% BSA and 0.09% Sodium Azide
ISOTYPE	IgG
ORIGIN	USA
PRODUCTION PROCEDURES	Antibody was affinity purified using an epitope specific to RENT1 immobilized on solid support.

The epitope recognized by A301-902A maps to a region between residue 1079 and 1129 of human regulator of nonsense transcripts 1 using the numbering given in entry NP_002902.2 (GeneID 5976).

Immunoglobulin concentration was determined by extinction coefficient: absorbance at 280 nm of 1.4 equals 1.0 mg of IgG.

APPLICATIONS Centrifuge tube to remove product from lid. Optimal working dilutions should be determined experimentally by the investigator. Prepare working dilution immediately before use.

Western Blot 1:2,000 – 1:10,000

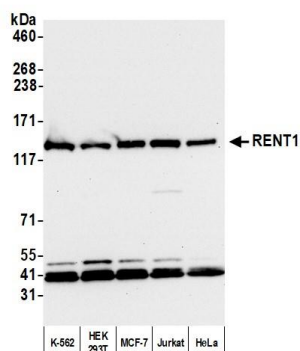
Immunoprecipitation 2 – 10 µg/mg lysate

ADDITIONAL INFO <https://www.bethyl.com/product/A301-902A>

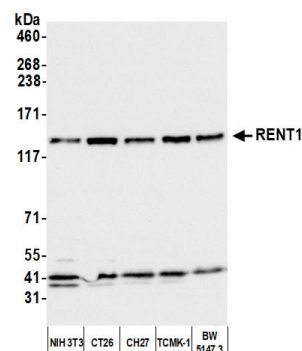
Use the link above to view SDS, a current list of citations, and other product specific information.

IP-western blot protocol: https://www.bethyl.com/content/protocol_IP_WB

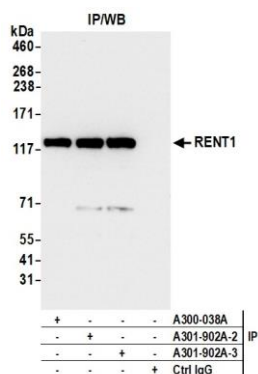
This document certifies that this product has met all of the quality control standards defined by Bethyl Laboratories, Inc.
Michael Spencer, PhD Date: March 9, 2022



Detection of human RENT1 by western blot. *Samples:* Whole cell lysate (50 µg) from K-562, HEK293T, MCF-7, Jurkat, and HeLa cells prepared using NETN lysis buffer. *Antibody:* Affinity purified rabbit anti-RENT1 antibody (A301-902A lot 3) used for WB at 0.04 µg/ml. *Detection:* Chemiluminescence with an exposure time of 10 seconds.



Detection of mouse RENT1 by western blot. *Samples:* Whole cell lysate (50 µg) from NIH 3T3, CT26, CH27, TCMK-1, and BW5147.3 cells prepared using NETN lysis buffer. *Antibody:* Affinity purified rabbit anti-RENT1 antibody (A301-902A lot 3) used for WB at 0.04 µg/ml. *Detection:* Chemiluminescence with an exposure time of 3 seconds.



Detection of human RENT1 by western blot of immunoprecipitates. *Samples:* Whole cell lysate (1.0 mg per IP reaction; 10% of IP loaded) from HEK293T cells prepared using NETN lysis buffer. *Antibodies:* Affinity purified rabbit anti-RENT1 antibody (A301-902A lot 3) used for IP at 4 µg per reaction. RENT1 was also immunoprecipitated by a previous lot of this antibody (A301-902A lot 2) and a second antibody against a different epitope of RENT1 (A300-038A). For blotting immunoprecipitated RENT1, A301-902A was used at 0.04 µg/ml. *Detection:* Chemiluminescence with an exposure time of 3 seconds.