



SZABO SCANDIC

Part of Europa Biosite

Produktinformation



Forschungsprodukte & Biochemikalien



Zellkultur & Verbrauchsmaterial



Diagnostik & molekulare Diagnostik



Laborgeräte & Service

Weitere Information auf den folgenden Seiten!
See the following pages for more information!



Lieferung & Zahlungsart

siehe unsere [Liefer- und Versandbedingungen](#)

Zuschläge

- Mindermengenzuschlag
- Trockeneiszuschlag
- Gefahrgutzuschlag
- Expressversand

SZABO-SCANDIC Handels GmbH

Quellenstraße 110, A-1100 Wien

T. +43(0)1 489 3961-0

F. +43(0)1 489 3961-7

mail@szabo-scandic.com

www.szabo-scandic.com

[linkedin.com/company/szaboscandic](https://www.linkedin.com/company/szaboscandic)



EML4 Antibody

Rabbit Polyclonal

| | | |
|---------------------------|------------|-------------|
| Antigen Affinity Purified | RefSeq ID | NP_061936.2 |
| Catalog No. A301-909A | Uniprot ID | Q9HC35 |
| Lot No. 2 | GeneID | 27436 |

| | |
|------------------------------|--|
| APPLICATIONS | WB, IP, IHC |
| SPECIES REACTIVITY | Human |
| AMOUNT | 100 µl |
| CONCENTRATION | 1000 µg/ml |
| STORAGE/SHELF LIFE | 2 – 8°C / 1 year from date of receipt |
| PHYSICAL STATE | Liquid |
| BUFFER | Tris-citrate/phosphate buffer, pH 7 to 8 containing 0.09% Sodium Azide |
| ISOTYPE | IgG |
| ORIGIN | USA |
| PRODUCTION PROCEDURES | Antibody was affinity purified using an epitope specific to EML4 immobilized on solid support. |

The epitope recognized by A301-909A maps to a region between residue 931 and 981 of human echinoderm microtubule associated protein like 4 using the numbering given in entry NP_061936.2 (GeneID 27436).

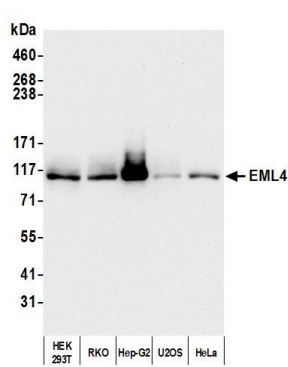
Immunoglobulin concentration was determined by extinction coefficient: absorbance at 280 nm of 1.4 equals 1.0 mg of IgG.

| | |
|---------------------|---|
| APPLICATIONS | Centrifuge tube to remove product from lid. Optimal working dilutions should be determined experimentally by the investigator. Prepare working dilution immediately before use. |
| | Western Blot 1:2,000 – 1:10,000 |
| | Immunoprecipitation 2 – 10 µg/mg lysate |
| | Immunohistochemistry 1:500 to 1:2,000. Epitope retrieval with citrate buffer pH6.0 is recommended for FFPE tissue sections. |

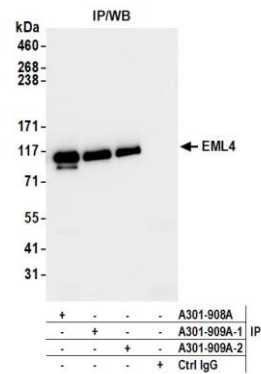
IHC HUMAN CONTROLS Linitis Plastica Stomach Cancer, Ovarian Carcinoma, Stomach Adenocarcinoma

ADDITIONAL INFO <https://www.fortislifesciences.com/p/A301-909A>
Use the link above to view SDS, a current list of citations, and other product specific information.

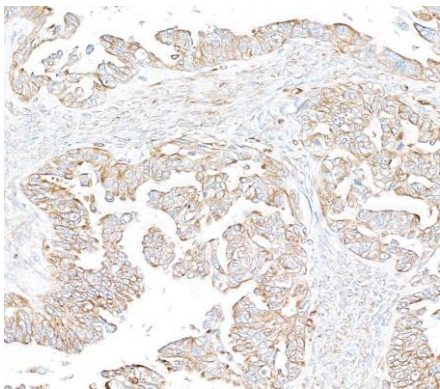
This document certifies that this product has met all of the quality control standards defined by Bethyl Laboratories, Inc.
Michael Spencer, PhD Date: June 9, 2023



Detection of human EML4 by western blot. *Samples:* Whole cell lysate (50 µg) from HEK293T, RKO, Hep-G2 (5 µg), U2OS, and HeLa cells prepared using NETN lysis buffer. *Antibody:* Affinity purified rabbit anti-EML4 antibody (A301-909A lot 2) used for WB at 0.1 µg/ml. *Detection:* Chemiluminescence with an exposure time of 30 seconds.



Detection of human EML4 by western blot of immunoprecipitates. *Samples:* Whole cell lysate (1.0 mg per IP reaction; 20% of IP loaded) from HEK293T cells prepared using NETN lysis buffer. *Antibodies:* Affinity purified rabbit anti-EML4 antibody (A301-909A lot 2) used for IP at 6 µg per reaction. EML4 was also immunoprecipitated by a previous lot of this antibody (A301-909A lot 1) and a second antibody against a different epitope of EML4 (A301-908A). For blotting immunoprecipitated EML4, A301-909A was used at 1 µg/ml. *Detection:* Chemiluminescence with an exposure time of 3 seconds.



Detection of human EML4 by immunohistochemistry. *Sample:* FFPE section of human ovarian carcinoma. *Antibody:* Affinity purified rabbit anti-EML4 (A301-909A) used at a dilution of 1:1,000 (1 µg/ml). *Detection:* DAB