



SZABO SCANDIC

Part of Europa Biosite

Produktinformation



Forschungsprodukte & Biochemikalien



Zellkultur & Verbrauchsmaterial



Diagnostik & molekulare Diagnostik



Laborgeräte & Service

Weitere Information auf den folgenden Seiten!
See the following pages for more information!



Lieferung & Zahlungsart

siehe unsere [Liefer- und Versandbedingungen](#)

Zuschläge

- Mindermengenzuschlag
- Trockeneiszuschlag
- Gefahrgutzuschlag
- Expressversand

SZABO-SCANDIC HandelsgmbH

Quellenstraße 110, A-1100 Wien

T. +43(0)1 489 3961-0

F. +43(0)1 489 3961-7

mail@szabo-scandic.com

www.szabo-scandic.com

[linkedin.com/company/szaboscandic](https://www.linkedin.com/company/szaboscandic) 

ZEB1 Antibody

Rabbit Polyclonal

Antigen Affinity Purified

Protein ID NP_110378.3

Catalog No. A301-922A

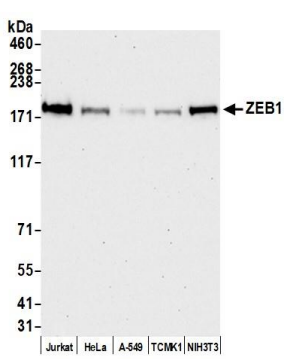
GeneID 6935

Lot No. A301-922A-4

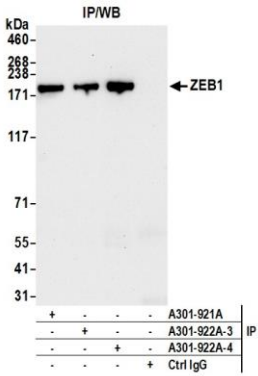


| | |
|------------------------------|---|
| APPLICATIONS | WB, IP, IHC |
| SPECIES REACTIVITY | Human, Mouse |
| AMOUNT | 100 µl |
| CONCENTRATION | 200 µg/ml |
| STORAGE/SHELF LIFE | 2 – 8° C / 1 year from date of receipt |
| PHYSICAL STATE | Liquid |
| BUFFER | Tris-buffered Saline containing 0.1% BSA and 0.09% Sodium Azide |
| ISOTYPE | IgG |
| ORIGIN | USA |
| PRODUCTION PROCEDURES | <p>Antibody was affinity purified using an epitope specific to ZEB1 immobilized on solid support.</p> <p>The epitope recognized by A301-922A maps to a region between residue 1074 and 1124 of human zinc finger E-box binding homeobox 1 using the numbering given in entry NP_110378.3 (GeneID 6935).</p> <p>Immunoglobulin concentration was determined by extinction coefficient: absorbance at 280 nm of 1.4 equals 1.0 mg of IgG.</p> |
| APPLICATIONS | <p>Centrifuge tube to remove product from lid. Optimal working dilutions should be determined experimentally by the investigator. Prepare working dilution immediately before use.</p> <p>Western Blot 1:2,000 – 1:10,000</p> <p>Immunoprecipitation 2 – 10 µg/mg lysate</p> <p>Immunohistochemistry 1:200 to 1:1000. Epitope retrieval with citrate buffer pH6.0 is recommended for FFPE tissue sections.</p> |
| APPLICATION NOTES | <p>Western blot of immunoprecipitates performed using Normal Pig Serum (Cat. No. S100-020), Goat anti-Rabbit Light Chain HRP Conjugate (Cat. No. A120-113P) and 4-8% SDS-PAGE (link to IP-western blot protocol in Additional Info section below).</p> <p>Western blot of lysates performed using standard western blot reagents and 4-8% SDS-PAGE.</p> |
| IHC HUMAN CONTROLS | Breast Carcinoma, Glioblastoma, Prostate Carcinoma |
| IHC MOUSE CONTROLS | Colon Carcinoma CT26, Renal Cell Carcinoma, Teratoma |
| ADDITIONAL INFO | <p>https://www.bethyl.com/product/A301-922A</p> <p>Use the link above to view SDS, a current list of citations, and other product specific information.</p> <p>IP-western blot protocol https://www.bethyl.com/content/protocol_IP_WB</p> |

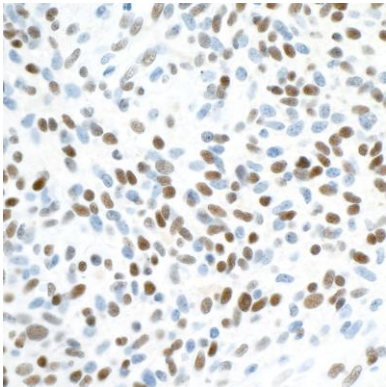
This document certifies that this product has met all of the quality control standards defined by Bethyl Laboratories, Inc.
Eric McIntush, PhD | Chief Scientific Officer Date: January 2, 2020



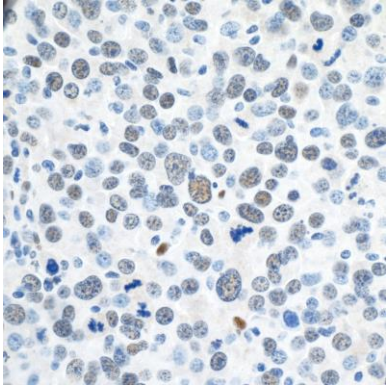
Detection of human and mouse ZEB1 by western blot.
Samples: Whole cell lysate (50 µg) from Jurkat, HeLa, A-549, TCMK-1, and NIH 3T3 cells prepared using NETN lysis buffer. *Antibody:* Affinity purified rabbit anti-ZEB1 antibody A301-922A (lot A301-922A-4) used for WB at 0.04 µg/ml. *Detection:* Chemiluminescence with an exposure time of 30 seconds.



Detection of human ZEB1 by western blot of immunoprecipitates. *Samples:* Whole cell lysate (1.0 mg per IP reaction; 20% of IP loaded) from Jurkat cells prepared using NETN lysis buffer. *Antibodies:* Affinity purified rabbit anti-ZEB1 antibody A301-922A (lot A301-922A-4) used for IP at 6 µg per reaction. ZEB1 was also immunoprecipitated by a previous lot of this antibody (lot A301-922A-3) and rabbit anti-ZEB1 antibody A301-921A. For blotting immunoprecipitated ZEB1, A301-922A was used at 0.04 µg/ml. *Detection:* Chemiluminescence with an exposure time of 10 seconds.



Detection of human ZEB1 by immunohistochemistry.
Sample: FFPE section of humanglioblastoma. *Antibody:* Affinity purified rabbit anti-ZEB1 (Cat. No. A301-922A lot 4) used at a dilution of 1:200 (1 µg/ml). *Detection:* DAB



Detection of mouse ZEB1 by immunohistochemistry.
Sample: FFPE section of mouse renal cell carcinoma. *Antibody:* Affinity purified rabbit anti-ZEB1 (Cat. No. A301-922A lot 4) used at a dilution of 1:200 (1 µg/ml). *Detection:* DAB