



SZABO SCANDIC

Part of Europa Biosite

Produktinformation



Forschungsprodukte & Biochemikalien



Zellkultur & Verbrauchsmaterial



Diagnostik & molekulare Diagnostik



Laborgeräte & Service

Weitere Information auf den folgenden Seiten!
See the following pages for more information!



Lieferung & Zahlungsart

siehe unsere [Liefer- und Versandbedingungen](#)

Zuschläge

- Mindermengenzuschlag
- Trockeneiszuschlag
- Gefahrgutzuschlag
- Expressversand

SZABO-SCANDIC Handels GmbH

Quellenstraße 110, A-1100 Wien

T. +43(0)1 489 3961-0

F. +43(0)1 489 3961-7

mail@szabo-scandic.com

www.szabo-scandic.com

[linkedin.com/company/szaboscandic](https://www.linkedin.com/company/szaboscandic) 

Cyclin K Antibody

Rabbit Polyclonal

Antigen Affinity Purified	RefSeq ID	NP_001092872.1
Catalog No. A301-939A	Uniprot ID	O75909
Lot No. 11	GeneID	8812

APPLICATIONS	WB, IP, IHC
SPECIES REACTIVITY	Human, Mouse
AMOUNT	100 µl
CONCENTRATION	1000 µg/ml
STORAGE/SHELF LIFE	2 – 8°C / 1 year from date of receipt
PHYSICAL STATE	Liquid
BUFFER	Tris-citrate/phosphate buffer, pH 7 to 8 containing 0.09% Sodium Azide
ISOTYPE	IgG
ORIGIN	USA
PRODUCTION PROCEDURES	Antibody was affinity purified using an epitope specific to Cyclin K immobilized on solid support.

The epitope recognized by A301-939A maps to a region between residue 530 and 580 of human cyclin K using the numbering given in entry NP_001092872.1 (GeneID 8812).

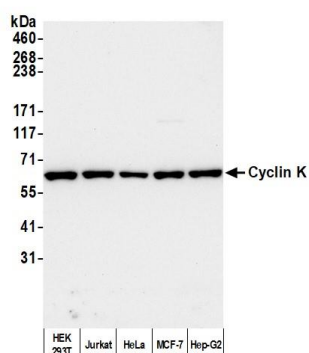
Immunoglobulin concentration was determined by extinction coefficient: absorbance at 280 nm of 1.4 equals 1.0 mg of IgG.

APPLICATIONS	Centrifuge tube to remove product from lid. Optimal working dilutions should be determined experimentally by the investigator. Prepare working dilution immediately before use.
	Western Blot 1:2,000 – 1:10,000
	Immunoprecipitation 2 – 10 µg/mg lysate
	Immunohistochemistry 1:1,000 to 1:5,000. Epitope retrieval with citrate buffer pH6.0 is recommended for FFPE tissue sections.

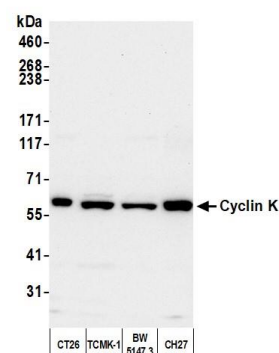
IHC HUMAN CONTROLS	Bladder Cell Carcinoma, Breast Carcinoma, Non-Small Cell Lung Cancer, Ovarian Carcinoma, Skin Squamous Cell Carcinoma, Testicular Seminoma
---------------------------	--

ADDITIONAL INFO	https://www.fortislifesciences.com/p/A301-939A Use the link above to view SDS, a current list of citations, and other product specific information.
------------------------	---

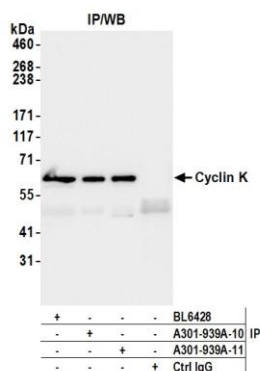
This document certifies that this product has met all of the quality control standards defined by Bethyl Laboratories, Inc.
Michael Spencer, PhD Date: April 19, 2023



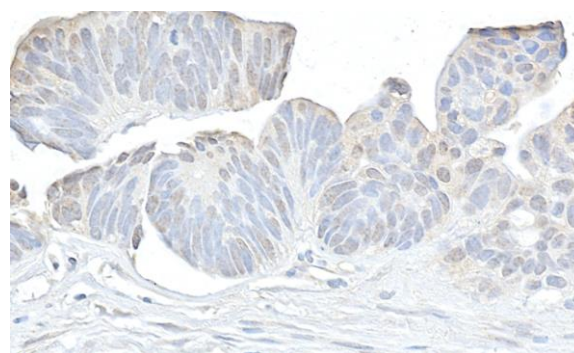
Detection of human Cyclin K by western blot. *Samples:* Whole cell lysate (50 µg) from HEK293T, Jurkat, HeLa, MCF-7, and Hep-G2 cells prepared using NETN lysis buffer. *Antibody:* Affinity purified rabbit anti-Cyclin K antibody (A301-939A lot 11) used for WB at 0.1 µg/ml. *Detection:* Chemiluminescence with an exposure time of 30 seconds.



Detection of mouse Cyclin K by western blot. *Samples:* Whole cell lysate (50 µg) from CT26, TCMK-1, BW5147.3, and CH27 cells prepared using NETN lysis buffer. *Antibody:* Affinity purified rabbit anti-Cyclin K antibody (A301-939A lot 11) used for WB at 0.1 µg/ml. *Detection:* Chemiluminescence with an exposure time of 30 seconds.



Detection of human Cyclin K by western blot of immunoprecipitates. *Samples:* Whole cell lysate (1.0 mg per IP reaction; 20% of IP loaded) from HEK293T cells prepared using NETN lysis buffer. *Antibodies:* Affinity purified rabbit anti-Cyclin K antibody (A301-939A lot 11) used for IP at 6 µg per reaction. Cyclin K was also immunoprecipitated by a previous lot of this antibody (A301-939A lot 10) and a second antibody against a different epitope of Cyclin K (BL6428). For blotting immunoprecipitated Cyclin K, A301-939A was used at 0.2 µg/ml. *Detection:* Chemiluminescence with an exposure time of 3 seconds.



Detection of human Cyclin K by immunohistochemistry. *Sample:* FFPE section of human ovarian carcinoma. *Antibody:* Affinity purified rabbit anti-Cyclin K A301-939A lot 11 used at a dilution of 1:5,000 (0.2 µg/ml). *Detection:* DAB