



# SZABO SCANDIC

Part of Europa Biosite

## Produktinformation



Forschungsprodukte & Biochemikalien



Zellkultur & Verbrauchsmaterial



Diagnostik & molekulare Diagnostik



Laborgeräte & Service

Weitere Information auf den folgenden Seiten!  
See the following pages for more information!



### Lieferung & Zahlungsart

siehe unsere [Liefer- und Versandbedingungen](#)

### Zuschläge

- Mindermengenzuschlag
- Trockeneiszuschlag
- Gefahrgutzuschlag
- Expressversand

### SZABO-SCANDIC Handels GmbH

Quellenstraße 110, A-1100 Wien

T. +43(0)1 489 3961-0

F. +43(0)1 489 3961-7

[mail@szabo-scandic.com](mailto:mail@szabo-scandic.com)

[www.szabo-scandic.com](http://www.szabo-scandic.com)

[linkedin.com/company/szaboscandic](https://www.linkedin.com/company/szaboscandic) 

# eIF2A Antibody

Rabbit Polyclonal

Antigen Affinity Purified

Protein ID NP\_114414.2

Catalog No. A301-949A-T

GeneID 83939

Lot No. A301-949A-T-1

---

<b>APPLICATIONS</b>	WB, IP, IHC
<b>SPECIES REACTIVITY</b>	Human
<b>AMOUNT</b>	10 µl
<b>CONCENTRATION</b>	200 µg/ml
<b>STORAGE/SHELF LIFE</b>	2 – 8°C / 1 year from date of receipt
<b>PHYSICAL STATE</b>	Liquid
<b>BUFFER</b>	Tris-buffered Saline containing 0.1% BSA and 0.09% Sodium Azide
<b>ISOTYPE</b>	IgG
<b>ORIGIN</b>	USA
<b>PRODUCTION PROCEDURES</b>	Antibody was affinity purified using an epitope specific to eIF2A immobilized on solid support.

The epitope recognized by A301-949A-T maps to a region between residue 525 and 575 of human eukaryotic translation initiation factor 2A, 65kDa using the numbering given in entry NP\_114414.2 (GeneID 83939).

**APPLICATIONS** Centrifuge tube to remove product from lid. Optimal working dilutions should be determined experimentally by the investigator. Prepare working dilution immediately before use.

Western Blot 1:2,000 – 1:10,000

Immunoprecipitation 2 – 5 µg/mg lysate

Immunohistochemistry 1:100 – 1:500. Epitope retrieval with Tris-EDTA pH 9.0 is recommended for FFPE tissue sections.

**ADDITIONAL INFO** <https://www.bethyl.com/product/A301-949A-T>

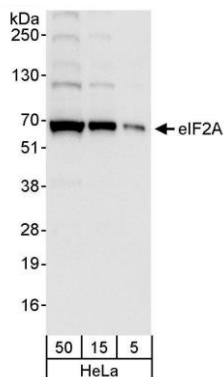
Use the link above to view SDS, a current list of citations, and other product specific information.

IP-western blot protocol: [https://www.bethyl.com/content/protocol\\_IP\\_WB](https://www.bethyl.com/content/protocol_IP_WB)

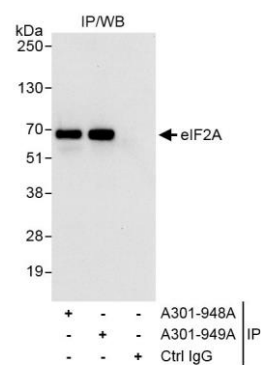
This document certifies that this product has met all of the quality control standards defined by Bethyl Laboratories, Inc.

Michael Spencer, PhD

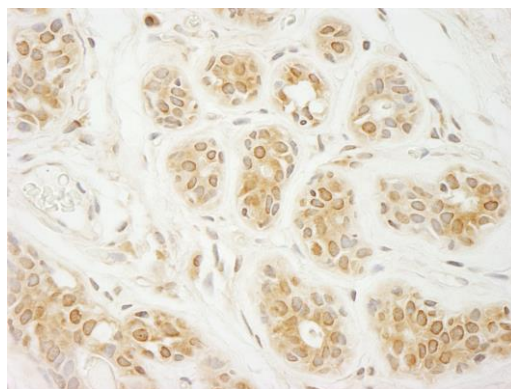
Date: June 6, 2022



**Detection of human eIF2A by western blot. *Samples:*** Whole cell lysate (5, 15, and 50 µg) from HeLa cells. ***Antibody:*** Affinity purified rabbit anti-eIF2A antibody A301-949A (lot A301-949A-1) used at 0.04 µg/ml. ***Detection:*** Chemiluminescence with an exposure time of 10 seconds.



**Detection of human eIF2A by western blot of immunoprecipitates. *Samples:*** Whole cell lysate (1 mg for IP, 20% of IP loaded) from HeLa cells. ***Antibodies:*** Affinity purified rabbit anti-eIF2A antibody A301-949A (lot A301-949A-1) used for IP at 3 µg/mg lysate. eIF2A was also immunoprecipitated by rabbit anti-eIF2A antibody A301-948A, which recognizes an upstream epitope. For blotting immunoprecipitated eIF2A, A301-949A was used at 1.0 µg/ml. ***Detection:*** Chemiluminescence with exposure time of 3 seconds.



**Detection of human eIF2A by immunohistochemistry. *Sample:*** FFPE section of human breast carcinoma. ***Antibody:*** Affinity purified rabbit anti-eIF2A (Cat. No. A301-949A lot 1) used at a dilution of 1:200 (1 µg/ml). ***Detection:*** DAB