



# SZABO SCANDIC

Part of Europa Biosite

## Produktinformation



Forschungsprodukte & Biochemikalien



Zellkultur & Verbrauchsmaterial



Diagnostik & molekulare Diagnostik



Laborgeräte & Service

Weitere Information auf den folgenden Seiten!  
See the following pages for more information!



### Lieferung & Zahlungsart

siehe unsere [Liefer- und Versandbedingungen](#)

### Zuschläge

- Mindermengenzuschlag
- Trockeneiszuschlag
- Gefahrgutzuschlag
- Expressversand

### SZABO-SCANDIC HandelsgmbH

Quellenstraße 110, A-1100 Wien

T. +43(0)1 489 3961-0

F. +43(0)1 489 3961-7

[mail@szabo-scandic.com](mailto:mail@szabo-scandic.com)

[www.szabo-scandic.com](http://www.szabo-scandic.com)

[linkedin.com/company/szaboscandic](https://www.linkedin.com/company/szaboscandic) 

# PDZ-GEF1 Antibody

Rabbit Polyclonal

Antigen Affinity Purified	Protein ID	NP_055062.1
Catalog No. A301-966A-T	GeneID	9693
Lot No. A301-966A-T-4		

<b>APPLICATIONS</b>	WB, IP, IHC
<b>SPECIES REACTIVITY</b>	Human
<b>PRESUMED REACTIVITY</b>	Based on 100% sequence identity, this antibody is predicted to react with Mouse and Dog
<b>AMOUNT</b>	10 µl
<b>CONCENTRATION</b>	1000 µg/ml
<b>STORAGE/SHELF LIFE</b>	2 – 8°C / 1 year from date of receipt
<b>PHYSICAL STATE</b>	Liquid
<b>BUFFER</b>	Tris-citrate/phosphate buffer, pH 7 to 8 containing 0.09% Sodium Azide
<b>ISOTYPE</b>	IgG
<b>ORIGIN</b>	USA
<b>PRODUCTION PROCEDURES</b>	Antibody was affinity purified using an epitope specific to PDZ-GEF1 immobilized on solid support.

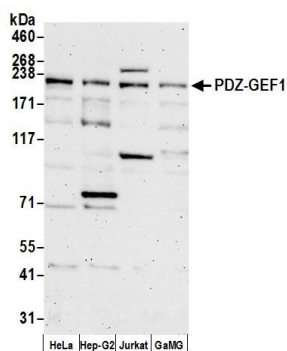
The epitope recognized by A301-966A-T maps to a region between residue 975 and 1025 of human PDZ domain containing guanine nucleotide exchange factor (GEF) 1 using the numbering given in entry NP\_055062.1 (GeneID 9693).

**APPLICATIONS** Centrifuge tube to remove product from lid. Optimal working dilutions should be determined experimentally by the investigator. Prepare working dilution immediately before use.

Western Blot	1:1,000 – 1:5,000
Immunoprecipitation	2 – 10 µg/mg lysate
Immunohistochemistry	1:1,000 to 1:5,000. Epitope retrieval with Tris-EDTA pH9.0 is recommended for FFPE tissue sections.

**ADDITIONAL INFO** <https://www.bethyl.com/product/A301-966A-T>  
Use the link above to view SDS, a current list of citations, and other product specific information.

This document certifies that this product has met all of the quality control standards defined by Bethyl Laboratories, Inc.  
Michael Spencer, PhD Date: June 6, 2022

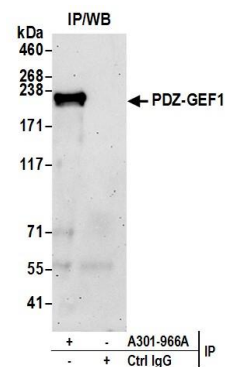


#### Detection of human PDZ-GEF1 by western blot.

**Samples:** Whole cell lysate (50 µg) from HeLa, Hep-G2, Jurkat, and GaMG cells prepared using NETN lysis buffer.

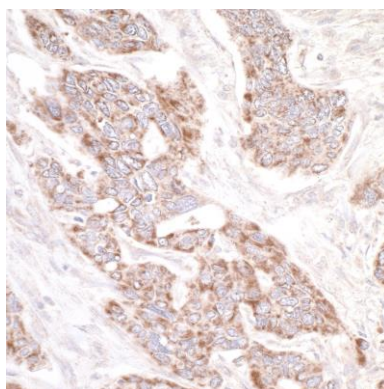
**Antibody:** Affinity purified rabbit anti-PDZ-GEF1 antibody A301-966A (lot A301-966A-4) used for WB at 0.4 µg/ml.

**Detection:** Chemiluminescence with an exposure time of 3 minutes.



#### Detection of human PDZ-GEF1 by western blot of immunoprecipitates.

**Samples:** Whole cell lysate (1.0 mg per IP reaction; 20% of IP loaded) from HeLa cells prepared using NETN lysis buffer. **Antibodies:** Affinity purified rabbit anti-PDZ-GEF1 antibody A301-966A (lot A301-966A-4) used for IP at 6 µg per reaction. For blotting immunoprecipitated PDZ-GEF1, A301-966A was used at 0.4 µg/ml. **Detection:** Chemiluminescence with an exposure time of 3 minutes.



#### Detection of human PDZ-GEF1 by immunohistochemistry.

**Sample:** FFPE section of human ovarian carcinoma.

**Antibody:** Affinity purified rabbit anti-PDZ-GEF1 (Cat. No. A301-966A lot 4) used at a dilution of 1:5,000 (0.2 µg/ml).

**Detection:** DAB