



SZABO SCANDIC

Part of Europa Biosite

Produktinformation



Forschungsprodukte & Biochemikalien



Zellkultur & Verbrauchsmaterial



Diagnostik & molekulare Diagnostik



Laborgeräte & Service

Weitere Information auf den folgenden Seiten!
See the following pages for more information!



Lieferung & Zahlungsart

siehe unsere [Liefer- und Versandbedingungen](#)

Zuschläge

- Mindermengenzuschlag
- Trockeneiszuschlag
- Gefahrgutzuschlag
- Expressversand

SZABO-SCANDIC HandelsgmbH

Quellenstraße 110, A-1100 Wien

T. +43(0)1 489 3961-0

F. +43(0)1 489 3961-7

mail@szabo-scandic.com

www.szabo-scandic.com

[linkedin.com/company/szaboscandic](https://www.linkedin.com/company/szaboscandic) 

NDE1 Antibody

Rabbit Polyclonal

Antigen Affinity Purified

Protein ID NP_060138.1

Catalog No. A301-974A-T

GeneID 54820

Lot No. A301-974A-T-1

APPLICATIONS IP

SPECIES REACTIVITY Human

AMOUNT 10 µl

CONCENTRATION 1000 µg/ml

STORAGE/SHELF LIFE 2 – 8°C / 1 year from date of receipt

PHYSICAL STATE Liquid

BUFFER Tris-citrate/phosphate buffer, pH 7 to 8 containing 0.09% Sodium Azide

ISOTYPE IgG

ORIGIN USA

PRODUCTION PROCEDURES Antibody was affinity purified using an epitope specific to NDE1 immobilized on solid support.

The epitope recognized by A301-974A-T maps to a region between residue 275 and 325 of human nuclear distribution gene E using the numbering given in entry NP_060138.1 (GeneID 54820).

Immunoglobulin concentration was determined by extinction coefficient: absorbance at 280 nm of 1.4 equals 1.0 mg of IgG.

APPLICATIONS Centrifuge tube to remove product from lid. Optimal working dilutions should be determined experimentally by the investigator. Prepare working dilution immediately before use.

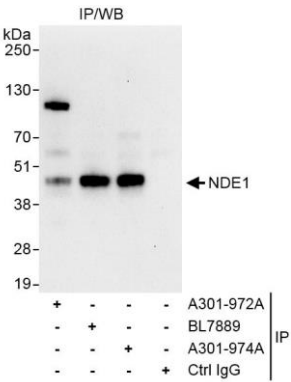
Western Blot Not recommended. Use rabbit anti-NDE1 antibody A301-972A.

Immunoprecipitation 2 – 5 µg/mg lysate

ADDITIONAL INFO <https://www.bethyl.com/product/A301-974A-T>

Use the link above to view SDS, a current list of citations, and other product specific information.
IP-western blot protocol: https://www.bethyl.com/content/protocol_IP_WB

This document certifies that this product has met all of the quality control standards defined by Bethyl Laboratories, Inc.
Michael Spencer, PhD Date: June 6, 2022



Detection of human NDE1 by western blot of immunoprecipitates. *Samples:* Whole cell lysate (1 mg for IP, 20% of IP loaded) from HeLa cells. *Antibodies:* Affinity purified rabbit anti-NDE1 antibody A301-974A used for IP at 3 µg/mg lysate. NDE1 was also immunoprecipitated by rabbit anti-NDE1 antibodies A301-972A and BL7889, which recognize upstream epitopes. For blotting immunoprecipitated NDE1, A301-972A was used at 1 µg/ml. *Detection:* Chemiluminescence with an exposure time of 10 seconds.