



# SZABO SCANDIC

Part of Europa Biosite

## Produktinformation



Forschungsprodukte & Biochemikalien



Zellkultur & Verbrauchsmaterial



Diagnostik & molekulare Diagnostik



Laborgeräte & Service

Weitere Information auf den folgenden Seiten!  
See the following pages for more information!



### Lieferung & Zahlungsart

siehe unsere [Liefer- und Versandbedingungen](#)

### Zuschläge

- Mindermengenzuschlag
- Trockeneiszuschlag
- Gefahrgutzuschlag
- Expressversand

### SZABO-SCANDIC HandelsgmbH

Quellenstraße 110, A-1100 Wien

T. +43(0)1 489 3961-0

F. +43(0)1 489 3961-7

[mail@szabo-scandic.com](mailto:mail@szabo-scandic.com)

[www.szabo-scandic.com](http://www.szabo-scandic.com)

[linkedin.com/company/szaboscandic](https://www.linkedin.com/company/szaboscandic) 

# Pol kappa Antibody

Rabbit Polyclonal

Antigen Affinity Purified

Protein ID NP\_057302.1

Catalog No. A301-977A-T

GeneID 51426

Lot No. A301-977A-T-2

**APPLICATIONS** WB, IP

**SPECIES REACTIVITY** Human

**AMOUNT** 10 µl

**CONCENTRATION** 1000 µg/ml

**STORAGE/SHELF LIFE** 2 – 8°C / 1 year from date of receipt

**PHYSICAL STATE** Liquid

**BUFFER** Tris-citrate/phosphate buffer, pH 7 to 8 containing 0.09% Sodium Azide

**ISOTYPE** IgG

**ORIGIN** USA

**PRODUCTION PROCEDURES** Antibody was affinity purified using an epitope specific to Pol kappa immobilized on solid support.

The epitope recognized by A301-977A-T maps to a region between residue 825 and 870 of human DNA polymerase kappa using the numbering given in entry NP\_057302.1 (GeneID 51426).

**APPLICATIONS** Centrifuge tube to remove product from lid. Optimal working dilutions should be determined experimentally by the investigator. Prepare working dilution immediately before use.

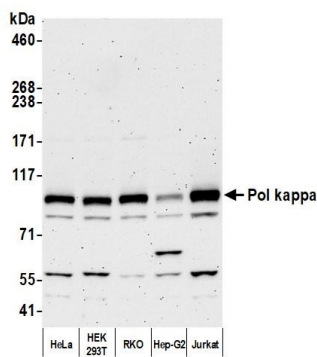
Western Blot 1:2,000 – 1:10,000

Immunoprecipitation 2 – 10 µg/mg lysate

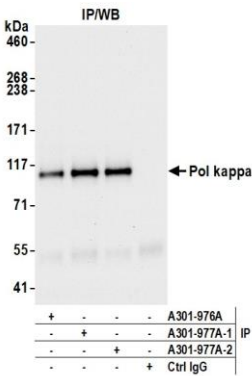
**ADDITIONAL INFO** <https://www.fortislife.com/p/A301-977A-T>

Use the link above to view SDS, a current list of citations, and other product specific information.

This document certifies that this product has met all of the quality control standards defined by Bethyl Laboratories, Inc.  
Michael Spencer, PhD Date: July 29, 2022



**Detection of human Pol kappa by western blot.** *Samples:* Whole cell lysate (10 µg) from HeLa, HEK293T, RKO, Hep-G2, and Jurkat cells prepared using NETN lysis buffer. *Antibody:* Affinity purified rabbit anti-Pol kappa antibody (A301-977A lot 2) used for WB at 0.1 µg/ml. *Detection:* Chemiluminescence with an exposure time of 3 minutes.



**Detection of human Pol kappa by western blot of immunoprecipitates.** *Samples:* Whole cell lysate (1.0 mg per IP reaction; 20% of IP loaded) from HeLa cells prepared using NETN lysis buffer. *Antibodies:* Affinity purified rabbit anti-Pol kappa antibody (A301-977A lot 2) used for IP at 6 µg per reaction. Pol kappa was also immunoprecipitated by a previous lot of this antibody (A301-977A lot 1) and a second antibody against a different epitope of Pol kappa (A301-976A). For blotting immunoprecipitated Pol kappa, A301-977A was used at 0.1 µg/ml. *Detection:* Chemiluminescence with an exposure time of 10 seconds.