



SZABO SCANDIC

Part of Europa Biosite

Produktinformation



Forschungsprodukte & Biochemikalien



Zellkultur & Verbrauchsmaterial



Diagnostik & molekulare Diagnostik



Laborgeräte & Service

Weitere Information auf den folgenden Seiten!
See the following pages for more information!



Lieferung & Zahlungsart

siehe unsere [Liefer- und Versandbedingungen](#)

Zuschläge

- Mindermengenzuschlag
- Trockeneiszuschlag
- Gefahrgutzuschlag
- Expressversand

SZABO-SCANDIC HandelsgmbH

Quellenstraße 110, A-1100 Wien

T. +43(0)1 489 3961-0

F. +43(0)1 489 3961-7

mail@szabo-scandic.com

www.szabo-scandic.com

[linkedin.com/company/szaboscandic](https://www.linkedin.com/company/szaboscandic) 

BRD4 Antibody

Rabbit Polyclonal

Antigen Affinity Purified	RefSeq ID	NP_490597.1
Catalog No. A301-985A100	Uniprot ID	O60885
Lot No. 9	GeneID	23476

APPLICATIONS	WB, IP, IHC
SPECIES REACTIVITY	Human, Mouse
AMOUNT	100 µl
CONCENTRATION	1000 µg/ml
STORAGE/SHELF LIFE	2 – 8°C / 1 year from date of receipt
PHYSICAL STATE	Liquid
BUFFER	Tris-citrate/phosphate buffer, pH 7 to 8 containing 0.09% Sodium Azide
ISOTYPE	IgG
ORIGIN	USA
PRODUCTION PROCEDURES	Antibody was affinity purified using an epitope specific to BRD4 immobilized on solid support.

The epitope recognized by A301-985A100 maps to a region between residue 1312 and 1362 of human bromodomain-containing protein 4 using the numbering given in entry NP_490597.1 (GeneID 23476).

Immunoglobulin concentration was determined using Beer's Law where 1mg/mL IgG has an A280 of 1.4.

APPLICATIONS	Centrifuge tube to remove product from lid. Optimal working dilutions should be determined experimentally by the investigator. Prepare working dilution immediately before use.
	Western Blot 1:10,000 – 1:25,000
	Immunoprecipitation 6 µg/mg lysate
	Immunohistochemistry 1:1,000 to 1:5,000. Epitope retrieval with citrate buffer pH6.0 is recommended for FFPE tissue sections.

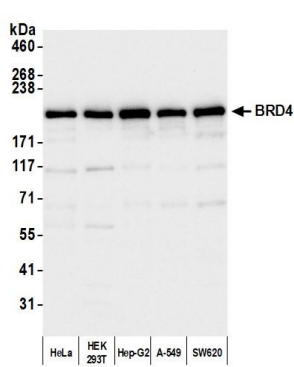
IHC HUMAN CONTROLS Breast Carcinoma, Colon Carcinoma, Ovarian Carcinoma, Prostate Carcinoma

IHC MOUSE CONTROLS Plasmacytoma, Renal Cell Carcinoma

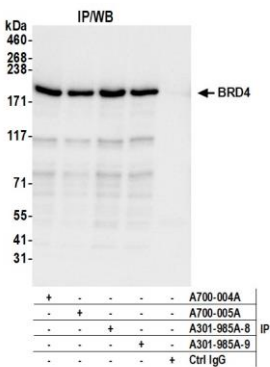
ADDITIONAL INFO <https://www.fortislifesciences.com/p/A301-985A100>

Use the link above to view SDS, a current list of citations, and other product specific information.

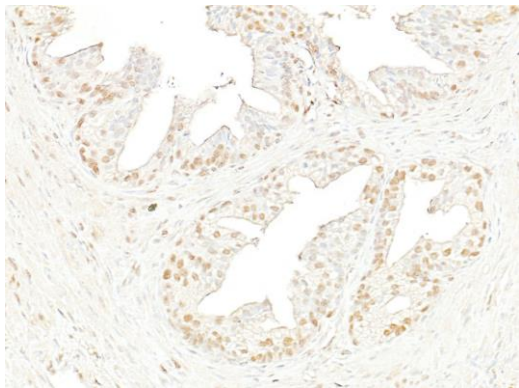
This document certifies that this product has met all of the quality control standards defined by Bethyl Laboratories, Inc.
Michael Spencer, PhD Date: May 14, 2024



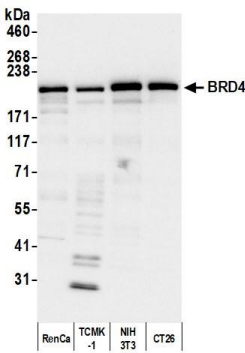
Detection of human BRD4 by western blot. *Samples:* Whole cell lysate (10 µg) from HeLa, HEK293T, Hep-G2, A-549, and SW620 cells prepared using NETN lysis buffer. *Antibody:* Affinity purified rabbit anti-BRD4 antibody (A301-985A100 lot 9) used for WB at 0.04 µg/ml. *Detection:* Chemiluminescence with an exposure time of 10 seconds.



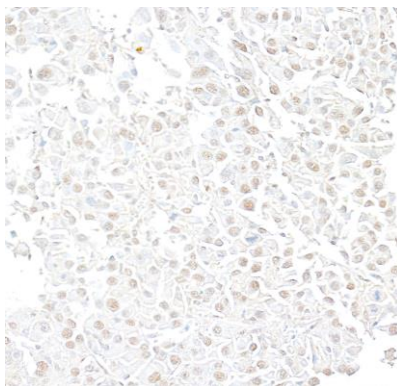
Detection of human BRD4 by western blot of immunoprecipitates. *Samples:* Whole cell lysate (1 mg per IP; 5% of IP loaded) from HeLa cells prepared using NETN lysis buffer. *Antibody:* Affinity purified rabbit anti-BRD4 antibody (A301-985A100 lot 9) used for IP at 6 µg per reaction. BRD4 was also immunoprecipitated by a previous lot of this antibody (A301-985A100 lot 8), a recombinant monoclonal antibody [BL-151-6F11](A700-005) and an antibody against a different epitope of BRD4 [BL-149-2H5](A700-004A). For blotting immunoprecipitated BRD4, A301-985A was used at 0.04 µg/ml. *Detection:* Chemiluminescence with an exposure time of 10 seconds.



Detection of human BRD4 by immunohistochemistry. *Sample:* FFPE section of prostate carcinoma. *Antibody:* Affinity purified rabbit anti-BRD4 antibody (A301-985A100 lot 9). *Secondary:* HRP-conjugated goat anti-rabbit IgG (A120-501P).



Detection of mouse BRD4 by western blot. *Samples:* Whole cell lysate (5 µg) from RenCa, TCMK-1, NIH 3T3, and CT26 cells prepared using NETN lysis buffer. *Antibody:* Affinity purified rabbit anti-BRD4 antibody (A301-985A100 lot 9) used for WB at 0.04 µg/ml. *Detection:* Chemiluminescence with an exposure time of 10 seconds.

**Detection of mouse BRD4 by immunohistochemistry.**

Sample: FFPE section of mouse renal cell carcinoma.

Antibody: Affinity purified rabbit anti-BRD4 antibody (A301-985A100 lot 9). *Secondary:* HRP-conjugated goat anti-rabbit IgG (A120-501P).