



SZABO SCANDIC

Part of Europa Biosite

Produktinformation



Forschungsprodukte & Biochemikalien



Zellkultur & Verbrauchsmaterial



Diagnostik & molekulare Diagnostik



Laborgeräte & Service

Weitere Information auf den folgenden Seiten!
See the following pages for more information!



Lieferung & Zahlungsart

siehe unsere [Liefer- und Versandbedingungen](#)

Zuschläge

- Mindermengenzuschlag
- Trockeneiszuschlag
- Gefahrgutzuschlag
- Expressversand

SZABO-SCANDIC HandelsgmbH

Quellenstraße 110, A-1100 Wien

T. +43(0)1 489 3961-0

F. +43(0)1 489 3961-7

mail@szabo-scandic.com

www.szabo-scandic.com

[linkedin.com/company/szaboscandic](https://www.linkedin.com/company/szaboscandic) 

Cyclin C Antibody

Rabbit Polyclonal

Antigen Affinity Purified

RefSeq ID NP_005181.2

Catalog No. A301-989A

Uniprot ID P24863

Lot No. A301-989A-3

GeneID 892

APPLICATIONS	WB, IP, IHC
SPECIES REACTIVITY	Human
PRESUMED REACTIVITY	Based on 100% sequence identity, this antibody is predicted to react with Mouse, Rat, Chicken and Bovine
AMOUNT	100 µl
CONCENTRATION	1000 µg/ml
STORAGE/SHELF LIFE	2 – 8°C / 1 year from date of receipt
PHYSICAL STATE	Liquid
BUFFER	Tris-citrate/phosphate buffer, pH 7 to 8 containing 0.09% Sodium Azide
ISOTYPE	IgG
ORIGIN	USA
PRODUCTION PROCEDURES	Antibody was affinity purified using an epitope specific to Cyclin C immobilized on solid support.

The epitope recognized by A301-989A maps to a region between residue 233 and 283 of human cyclin C using the numbering given in entry NP_005181.2 (GeneID 892).

Immunoglobulin concentration was determined by extinction coefficient: absorbance at 280 nm of 1.4 equals 1.0 mg of IgG.

APPLICATIONS Centrifuge tube to remove product from lid. Optimal working dilutions should be determined experimentally by the investigator. Prepare working dilution immediately before use.

Western Blot 1:2,000 – 1:10,000

Immunoprecipitation 2 – 10 µg/mg lysate

Immunohistochemistry 1:1,000 to 1:5,000. Epitope retrieval with citrate buffer pH6.0 is recommended for FFPE tissue sections.

IHC HUMAN CONTROLS Breast Carcinoma, Skin Squamous Cell Carcinoma

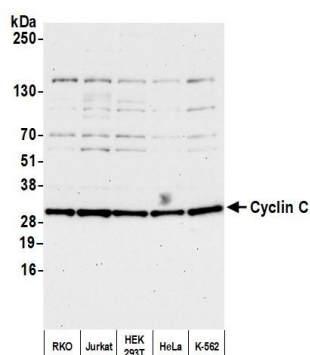
ADDITIONAL INFO <https://www.fortislifesciences.com/p/A301-989A>

Use the link above to view SDS, a current list of citations, and other product specific information.

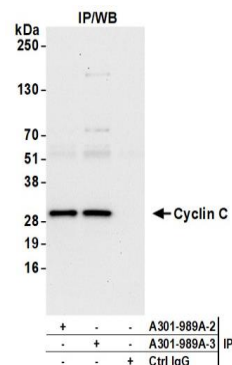
This document certifies that this product has met all of the quality control standards defined by Bethyl Laboratories, Inc.

Michael Spencer, PhD

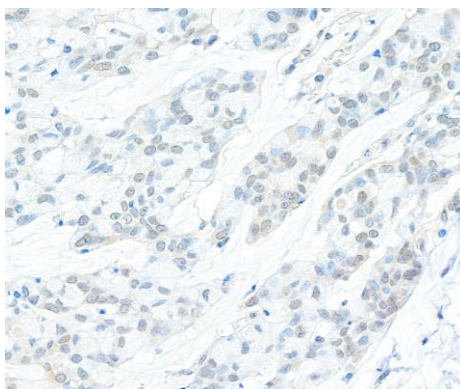
Date: November 15, 2022



Detection of human Cyclin C by western blot. *Samples:* Whole cell lysate (10 µg) from RKO, Jurkat, HEK293T, HeLa, and K-562 cells prepared using NETN lysis buffer. ***Antibody:*** Affinity purified rabbit anti-Cyclin C antibody (A301-989A lot 3) used for WB at 0.1 µg/ml. ***Detection:*** Chemiluminescence with an exposure time of 30 seconds.



Detection of human Cyclin C by western blot of immunoprecipitates. *Samples:* Whole cell lysate (1.0 mg per IP reaction; 5% of IP loaded) from Jurkat cells prepared using NETN lysis buffer. ***Antibodies:*** Affinity purified rabbit anti-Cyclin C antibody (A301-989A lot 3) used for IP at 6 µg per reaction. Cyclin C was also immunoprecipitated by a previous lot of this antibody (A301-989A lot 2). For blotting immunoprecipitated Cyclin C, A301-989A was used at 0.1 µg/ml. ***Detection:*** Chemiluminescence with an exposure time of 10 seconds.



Detection of human Cyclin C by immunohistochemistry. *Sample:* FFPE section of human breast carcinoma. ***Antibody:*** Affinity purified rabbit anti-Cyclin C (A301-989A Lot 3) used at a dilution of 1:1,000 (1 µg/ml). ***Detection:*** DAB