



SZABO SCANDIC

Part of Europa Biosite

Produktinformation



Forschungsprodukte & Biochemikalien



Zellkultur & Verbrauchsmaterial



Diagnostik & molekulare Diagnostik



Laborgeräte & Service

Weitere Information auf den folgenden Seiten!
See the following pages for more information!



Lieferung & Zahlungsart

siehe unsere [Liefer- und Versandbedingungen](#)

Zuschläge

- Mindermengenzuschlag
- Trockeneiszuschlag
- Gefahrgutzuschlag
- Expressversand

SZABO-SCANDIC Handels GmbH

Quellenstraße 110, A-1100 Wien

T. +43(0)1 489 3961-0

F. +43(0)1 489 3961-7

mail@szabo-scandic.com

www.szabo-scandic.com

[linkedin.com/company/szaboscandic](https://www.linkedin.com/company/szaboscandic) 

eIF3A/eIF3S10 Antibody

Rabbit Polyclonal

Antigen Affinity Purified	Protein ID	NP_003741.1
Catalog No. A302-002A-T	GeneID	8661
Lot No. A302-002A-T-1		

APPLICATIONS	WB, IP
SPECIES REACTIVITY	Human, Mouse
PRESUMED REACTIVITY	Based on 100% sequence identity, this antibody is predicted to react with Rat, Zebrafish and X. tropicalis
AMOUNT	10 µl
CONCENTRATION	1000 µg/ml
STORAGE/SHELF LIFE	2 – 8°C / 1 year from date of receipt
PHYSICAL STATE	Liquid
BUFFER	Tris-citrate/phosphate buffer, pH 7 to 8 containing 0.09% Sodium Azide
ISOTYPE	IgG
ORIGIN	USA
PRODUCTION PROCEDURES	Antibody was affinity purified using an epitope specific to eIF3A/eIF3S10 immobilized on solid support.

The epitope recognized by A302-002A-T maps to a region between residue 1 and 50 of human translation initiation factor 3 subunit A (eukaryotic translation initiation factor 3, subunit 10) using the numbering given in entry NP_003741.1 (GeneID 8661).

APPLICATIONS Centrifuge tube to remove product from lid. Optimal working dilutions should be determined experimentally by the investigator. Prepare working dilution immediately before use.

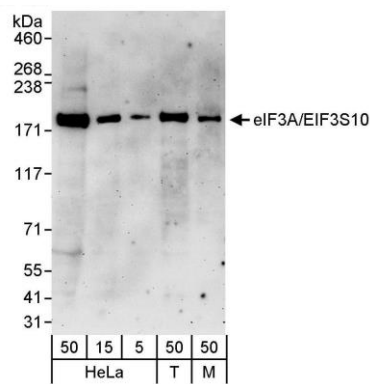
Western Blot 1:2,000 – 1:10,000

Immunoprecipitation 2 – 5 µg/mg lysate

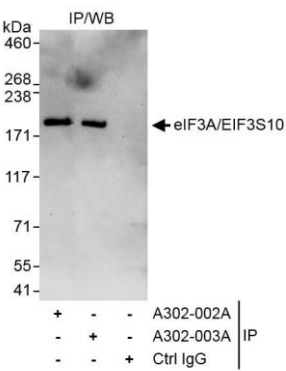
ADDITIONAL INFO <https://www.bethyl.com/product/A302-002A-T>

Use the link above to view SDS, a current list of citations, and other product specific information. IP-western blot protocol: https://www.bethyl.com/content/protocol_IP_WB

This document certifies that this product has met all of the quality control standards defined by Bethyl Laboratories, Inc.
Michael Spencer, PhD Date: June 6, 2022



Detection of human and mouse eIF3A/eIF3S10 by western blot. *Samples:* Whole cell lysate from HeLa (5, 15, and 50 µg), HEK293T (T; 50 µg) and mouse NIH 3T3 (M; 50 µg) cells. *Antibody:* Affinity purified rabbit anti-eIF3A/eIF3S10 antibody A302-002A (lot A302-002A-1) used at 0.1 µg/ml. *Detection:* Chemiluminescence with an exposure time of 3 minutes.



Detection of human eIF3A/eIF3S10 by western blot of immunoprecipitates (h). *Samples:* Whole cell lysate (1 mg for IP, 20% of IP loaded) from HeLa cells. *Antibodies:* Affinity purified rabbit anti-eIF3A/eIF3S10 antibody A302-002A (lot A302-002A-1) used for IP at 3 µg/mg lysate. eIF3A/eIF3S10 was also immunoprecipitated by rabbit anti-eIF3A/eIF3S10 antibody A302-003A, which recognizes a downstream epitope. For blotting immunoprecipitated eIF3A/eIF3S10, A302-002A was used at 1.0 µg/ml. *Detection:* Chemiluminescence with exposure time of 30 seconds.