



SZABO SCANDIC

Part of Europa Biosite

Produktinformation



Forschungsprodukte & Biochemikalien



Zellkultur & Verbrauchsmaterial



Diagnostik & molekulare Diagnostik



Laborgeräte & Service

Weitere Information auf den folgenden Seiten!
See the following pages for more information!



Lieferung & Zahlungsart

siehe unsere [Liefer- und Versandbedingungen](#)

Zuschläge

- Mindermengenzuschlag
- Trockeneiszuschlag
- Gefahrgutzuschlag
- Expressversand

SZABO-SCANDIC HandelsgmbH

Quellenstraße 110, A-1100 Wien

T. +43(0)1 489 3961-0

F. +43(0)1 489 3961-7

mail@szabo-scandic.com

www.szabo-scandic.com

[linkedin.com/company/szaboscandic](https://www.linkedin.com/company/szaboscandic) 

DPF2 Antibody

Rabbit Polyclonal

Antigen Affinity Purified	RefSeq ID	NP_006259.1
Catalog No. A303-595A-T	Uniprot ID	Q92785
Lot No. 1	GeneID	5977

APPLICATIONS	IP
SPECIES REACTIVITY	Human
PRESUMED REACTIVITY	Based on 100% sequence identity, this antibody is predicted to react with Mouse
AMOUNT	10 µl
CONCENTRATION	1000 µg/ml
STORAGE/SHELF LIFE	2 – 8°C / 1 year from date of receipt
PHYSICAL STATE	Liquid
BUFFER	Tris-citrate/phosphate buffer, pH 7 to 8 containing 0.09% Sodium Azide
ISOTYPE	IgG
ORIGIN	USA
PRODUCTION PROCEDURES	Antibody was affinity purified using an epitope specific to DPF2 immobilized on solid support.

The epitope recognized by A303-595A maps to a region between residue 125 and 175 of human D4, Zinc and Double PHD Fingers Family 2 using the numbering given in entry NP_006259.1 (GeneID 5977).

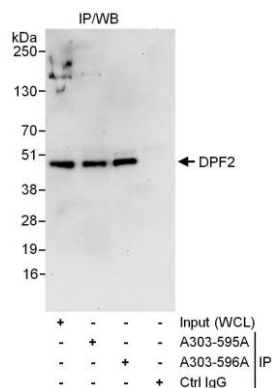
Immunoglobulin concentration was determined using Beer's Law where 1 mg/mL IgG has an A280 of 1.4.

APPLICATIONS Centrifuge tube to remove product from lid. Optimal working dilutions should be determined experimentally by the investigator. Prepare working dilution immediately before use.

Immunoprecipitation 6 µg/mg lysate

ADDITIONAL INFO <https://www.fortislife.com/p/A303-595A-T>
Use the link above to view SDS, a current list of citations, and other product specific information.

This document certifies that this product has met all of the quality control standards defined by Bethyl Laboratories, Inc.
Michael Spencer, PhD Date: January 31, 2024



Detection of human DPF2 by western blot of immunoprecipitates. *Samples:* Whole cell lysate (50 μ g for Input lane; 1 mg for IP, 20% of IP loaded) from HeLa. *Antibodies:* Affinity purified rabbit anti-DPF2 antibody A303-595A used for WB at 1 μ g/ml and used for IP at 6 μ g/mg lysate. DPF2 was also immunoprecipitated by rabbit anti-DPF2 antibody A303-596A, which recognizes a downstream epitope. *Detection:* Chemiluminescence with an exposure time of 30 seconds.