



SZABO SCANDIC

Part of Europa Biosite

Produktinformation



Forschungsprodukte & Biochemikalien



Zellkultur & Verbrauchsmaterial



Diagnostik & molekulare Diagnostik



Laborgeräte & Service

Weitere Information auf den folgenden Seiten!
See the following pages for more information!



Lieferung & Zahlungsart

siehe unsere [Liefer- und Versandbedingungen](#)

Zuschläge

- Mindermengenzuschlag
- Trockeneiszuschlag
- Gefahrgutzuschlag
- Expressversand

SZABO-SCANDIC Handels GmbH

Quellenstraße 110, A-1100 Wien

T. +43(0)1 489 3961-0

F. +43(0)1 489 3961-7

mail@szabo-scandic.com

www.szabo-scandic.com

[linkedin.com/company/szaboscandic](https://www.linkedin.com/company/szaboscandic)



PCCA Antibody

Rabbit Polyclonal

Antigen Affinity Purified

Protein ID NP_000273.2

Catalog No. A304-324A

GeneID 5095

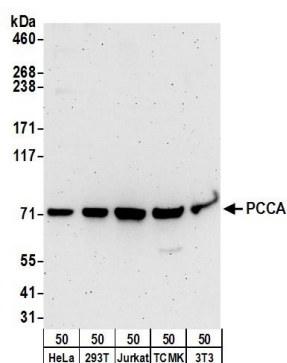
Lot No. A304-324A-1



APPLICATIONS	WB, IHC						
SPECIES REACTIVITY	Human, Mouse						
PRESUMED REACTIVITY	Based on 100% sequence identity, this antibody is predicted to react with Rat						
AMOUNT	100 µl						
CONCENTRATION	1000 µg/ml						
STORAGE/SHELF LIFE	2 – 8° C / 1 year from date of receipt						
PHYSICAL STATE	Liquid						
BUFFER	Tris-citrate/phosphate buffer, pH 7 to 8 containing 0.09% Sodium Azide						
ISOTYPE	IgG						
ORIGIN	USA						
PRODUCTION PROCEDURES	<p>Antibody was affinity purified using an epitope specific to PCCA immobilized on solid support.</p> <p>The epitope recognized by A304-324A maps to a region between residue 678 to 728 of human Propionyl CoA Carboxylase, Alpha Polypeptide using the numbering given in entry NP_000273.2 (GeneID 5095).</p> <p>Antibody concentration was determined by extinction coefficient: absorbance at 280 nm of 1.4 equals 1.0 mg of IgG.</p>						
APPLICATIONS	<p>Centrifuge tube to remove product from lid. Optimal working dilutions should be determined experimentally by the investigator. Prepare working dilution immediately before use.</p> <table><tr><td>Western Blot</td><td>1:2,000 – 1:10,000</td></tr><tr><td>Immunoprecipitation</td><td>Not recommended</td></tr><tr><td>Immunohistochemistry</td><td>1:500 – 1:2,000. Epitope retrieval with citrate buffer pH 6.0 is recommended for FFPE tissue sections.</td></tr></table>	Western Blot	1:2,000 – 1:10,000	Immunoprecipitation	Not recommended	Immunohistochemistry	1:500 – 1:2,000. Epitope retrieval with citrate buffer pH 6.0 is recommended for FFPE tissue sections.
Western Blot	1:2,000 – 1:10,000						
Immunoprecipitation	Not recommended						
Immunohistochemistry	1:500 – 1:2,000. Epitope retrieval with citrate buffer pH 6.0 is recommended for FFPE tissue sections.						
APPLICATION NOTES	Western blot of lysates performed using standard western blot reagents and 4–8% SDS-PAGE.						
IHC HUMAN CONTROLS	Ovarian Carcinoma, Prostate Carcinoma						
ADDITIONAL INFO	<p>https://www.bethyl.com/product/A304-324A</p> <p>Use the link above to view SDS, a current list of citations, and other product specific information.</p>						

This document certifies that this product has met all of the quality control standards defined by Bethyl Laboratories, Inc.
Eric McIntush, PhD | Chief Scientific Officer

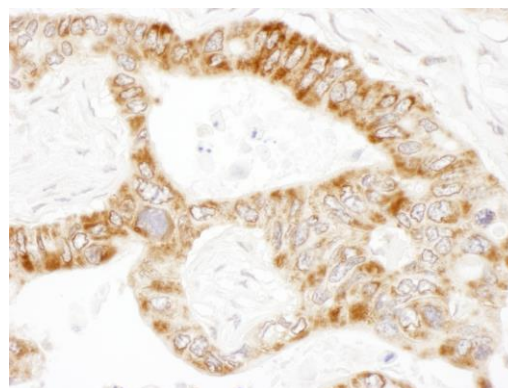
Date: June 21, 2019

**Detection of human and mouse PCCA by western blot.**

Samples: Whole cell lysate (50 µg) from HeLa, HEK293T, Jurkat, mouse TCMK-1, and mouse NIH 3T3 cells.

Antibodies: Affinity purified rabbit anti-PCCA antibody A304-324A (lot A304-324A-1) used for WB at 0.1 µg/ml.

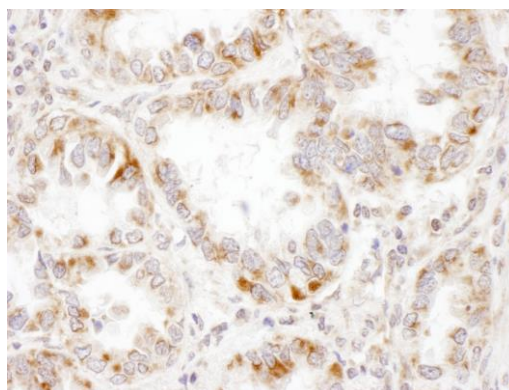
Detection: Chemiluminescence with an exposure time of 3 minutes.

**Detection of human PCCA by immunohistochemistry.**

Sample: FFPE section of human ovarian carcinoma.

Antibody: Affinity purified rabbit anti-PCCA (Cat. No. A304-324A Lot1) used at a dilution of 1:1,000 (1 µg/ml).

Detection: DAB. *Counterstain:* IHC Hematoxylin (blue).

**Detection of human PCCA by immunohistochemistry.**

Sample: FFPE section of human lung cancer. *Antibody:* Affinity purified rabbit anti-PCCA (Cat. No. A304-324A Lot1) used at a dilution of 1:1,000 (1 µg/ml). *Detection:* DAB