



# SZABO SCANDIC

Part of Europa Biosite

## Produktinformation



Forschungsprodukte & Biochemikalien



Zellkultur & Verbrauchsmaterial



Diagnostik & molekulare Diagnostik



Laborgeräte & Service

Weitere Information auf den folgenden Seiten!  
See the following pages for more information!



### Lieferung & Zahlungsart

siehe unsere [Liefer- und Versandbedingungen](#)

### Zuschläge

- Mindermengenzuschlag
- Trockeneiszuschlag
- Gefahrgutzuschlag
- Expressversand

### SZABO-SCANDIC HandelsgmbH

Quellenstraße 110, A-1100 Wien

T. +43(0)1 489 3961-0

F. +43(0)1 489 3961-7

[mail@szabo-scandic.com](mailto:mail@szabo-scandic.com)

[www.szabo-scandic.com](http://www.szabo-scandic.com)

[linkedin.com/company/szaboscandic](https://www.linkedin.com/company/szaboscandic) 

# RNA Polymerase II, Phospho (S2) Antibody

Rabbit Polyclonal

Antigen Affinity Purified	RefSeq ID	NP_000928.1
Catalog No. A304-407A-T	Uniprot ID	P24928
Lot No. 1	GeneID	5430

---

<b>APPLICATIONS</b>	WB, IP, IHC
<b>SPECIES REACTIVITY</b>	Human, Mouse
<b>AMOUNT</b>	10 µl
<b>CONCENTRATION</b>	1000 µg/ml
<b>STORAGE/SHELF LIFE</b>	2 - 8°C / 1 year from date of receipt
<b>PHYSICAL STATE</b>	Liquid
<b>BUFFER</b>	Tris-citrate/phosphate buffer, pH 7 to 8 containing 0.09% Sodium Azide
<b>ISOTYPE</b>	IgG
<b>ORIGIN</b>	USA
<b>PRODUCTION PROCEDURES</b>	Antibody was affinity purified using an epitope specific to RNA Polymerase II, Phospho (S2) immobilized on solid support.

Immunogen for A304-407A was a phosphorylated synthetic peptide, which represented a portion of human RNA Polymerase II (GeneID 5430) around serine 2 of the C-terminal repeat YSPTSPS of human RNA Polymerase II using the numbering given in entry NP\_000928.1 (GeneID 5430).

Immunoglobulin concentration was determined using Beer's Law where 1mg/mL IgG has an A280 of 1.4.

<b>APPLICATIONS</b>	Centrifuge tube to remove product from lid. Optimal working dilutions should be determined experimentally by the investigator. Prepare working dilution immediately before use.
---------------------	---

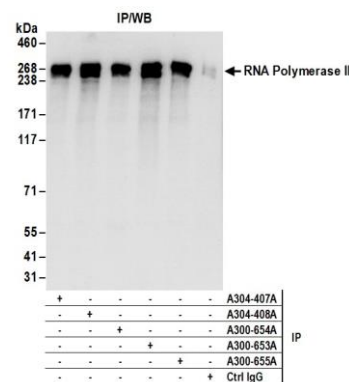
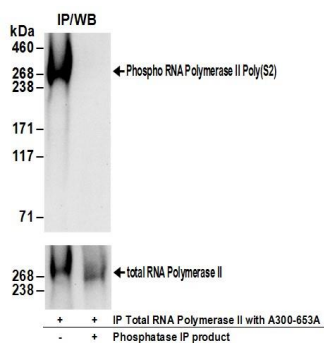
Western Blot	1:500 - 1:2500 (3-8% Tris-acetate gel recommended)
Immunoprecipitation	6 µg/mg lysate
Immunohistochemistry	1:2000 - 1:10,000. Epitope retrieval with citrate buffer pH 6.0 is recommended for FFPE tissue sections.

<b>IHC HUMAN CONTROLS</b>	Breast Carcinoma, Colon Carcinoma, Ovarian Carcinoma, Prostate Carcinoma, Stomach Adenocarcinoma, Testicular Seminoma
---------------------------	---

<b>IHC MOUSE CONTROLS</b>	Renal Cell Carcinoma, Teratoma
---------------------------	--------------------------------

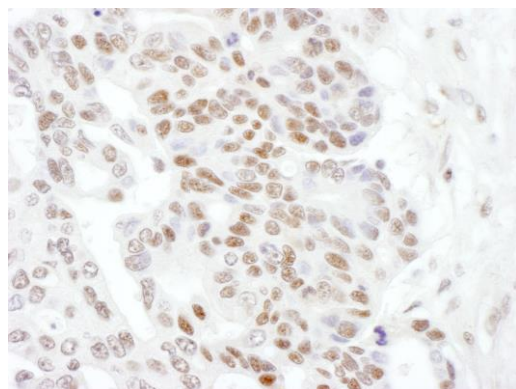
<b>ADDITIONAL INFO</b>	<a href="https://www.fortislife.com/p/A304-407A-T">https://www.fortislife.com/p/A304-407A-T</a> Use the link above to view SDS, a current list of citations, and other product specific information.
------------------------	---

This document certifies that this product has met all of the quality control standards defined by Bethyl Laboratories, Inc.  
Michael Spencer, PhD Date: January 31, 2024

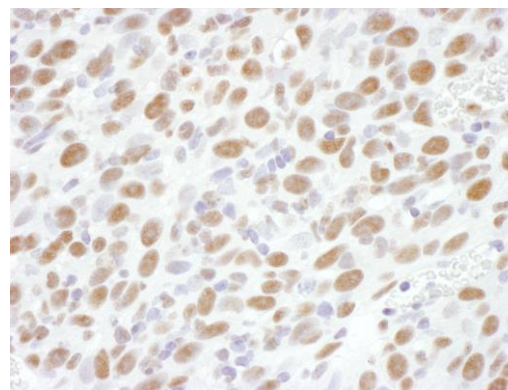


**Detection of human Phospho RNA Polymerase II (S2) by western blot of immunoprecipitates.** *Samples:* Whole cell lysate (1 mg for IP; 20% of IP loaded) prepared using NETN buffer from 293T cells. *Antibodies:* RNA Polymerase II was immunoprecipitated using rabbit anti-RNA Polymerase II antibody A300-653A. Following immunoprecipitation the product of the IP reaction was mock treated (-) or treated with phosphatases (+). Affinity purified rabbit anti-Phospho RNA Polymerase II (S2) antibody A304-407A was used for WB at 1 µg/ml (upper panel). To examine total RNA Polymerase II, the blot was stripped and then blotted with rabbit anti-RNA Polymerase II antibody A300-653A (lower panel). *Detection:* Chemiluminescence with exposure times of 30 seconds (upper panel) and 15 seconds (lower panel).

**Detection of human Phospho RNA Polymerase II (S2) by western blot of immunoprecipitates.** *Samples:* Whole cell lysate (1 mg for IP; 20% of IP loaded) prepared using NETN buffer from 293T cells. *Antibodies:* Affinity purified rabbit anti-Phospho RNA Polymerase II (S2) antibody A304-407A (lot A304-407A-1) used for IP at 6 µg per reaction. Phospho RNA Polymerase II was also immunoprecipitated by rabbit anti-Phospho RNA Polymerase II antibodies A304-408A, A300-654A and A300-655A, and rabbit anti-RNA Polymerase II antibody A300-653A. For blotting immunoprecipitated Phospho RNA Polymerase II, A300-653 was used at 1 µg/ml. *Detection:* Chemiluminescence with an exposure time of 3 seconds.



**Detection of human Phospho RNA Polymerase II (S2) by immunohistochemistry.** *Sample:* FFPE section of human ovarian carcinoma. *Antibody:* Affinity purified rabbit anti-Phospho RNA Polymerase II (S2) (Cat. No. A304-407A Lot1) used at a dilution of 1:5,000 (0.2µg/ml). *Detection:* DAB



**Detection of mouse Phospho RNA Polymerase II (S2) by immunohistochemistry.** *Sample:* FFPE section of mouse renal cell carcinoma. *Antibody:* Affinity purified rabbit anti-Phospho RNA Polymerase II (S2) (Cat. No. A304-407A Lot1) used at a dilution of 1:5,000 (0.2µg/ml). *Detection:* DAB