



SZABO SCANDIC

Part of Europa Biosite

Produktinformation



Forschungsprodukte & Biochemikalien



Zellkultur & Verbrauchsmaterial



Diagnostik & molekulare Diagnostik



Laborgeräte & Service

Weitere Information auf den folgenden Seiten!
See the following pages for more information!



Lieferung & Zahlungsart

siehe unsere [Liefer- und Versandbedingungen](#)

Zuschläge

- Mindermengenzuschlag
- Trockeneiszuschlag
- Gefahrgutzuschlag
- Expressversand

SZABO-SCANDIC HandelsgmbH

Quellenstraße 110, A-1100 Wien

T. +43(0)1 489 3961-0

F. +43(0)1 489 3961-7

mail@szabo-scandic.com

www.szabo-scandic.com

[linkedin.com/company/szaboscandic](https://www.linkedin.com/company/szaboscandic) 

Carbonyl Reductase 1 /CBR1 Antibody

Rabbit Polyclonal

Antigen Affinity Purified	Protein ID	P16152
Catalog No. A304-772A-T	GeneID	873
Lot No. A304-772A-T-2		

APPLICATIONS	WB, IP
SPECIES REACTIVITY	Human
PRESUMED REACTIVITY	Based on 100% sequence identity, this antibody is predicted to react with Orangutan
AMOUNT	10 µl
CONCENTRATION	1000 µg/ml
STORAGE/SHELF LIFE	2 – 8°C / 1 year from date of receipt
PHYSICAL STATE	Liquid
BUFFER	Tris-citrate/phosphate buffer, pH 7 to 8 containing 0.09% Sodium Azide
ISOTYPE	IgG
ORIGIN	USA
PRODUCTION PROCEDURES	Antibody was affinity purified using an epitope specific to Carbonyl Reductase 1 /CBR1 immobilized on solid support.

The epitope recognized by A304-772A-T maps to a region between residue 227 to 277 of human Carbonyl reductase [NADPH] 1 using the numbering given in entry P16152 (GeneID 873).

Antibody concentration was determined by extinction coefficient: absorbance at 280 nm of 1.4 equals 1.0 mg of IgG.

APPLICATIONS Centrifuge tube to remove product from lid. Optimal working dilutions should be determined experimentally by the investigator. Prepare working dilution immediately before use.

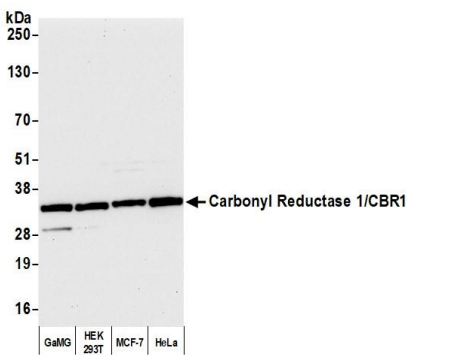
Western Blot 1:2,000 – 1:10,000

Immunoprecipitation 2 – 10 µg/mg lysate

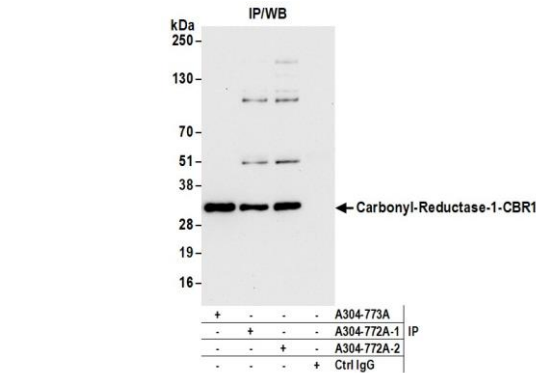
ADDITIONAL INFO <https://www.bethyl.com/product/A304-772A-T>

Use the link above to view SDS, a current list of citations, and other product specific information.
IP-western blot protocol: https://www.bethyl.com/content/protocol_IP_WB

This document certifies that this product has met all of the quality control standards defined by Bethyl Laboratories, Inc.
Michael Spencer, PhD Date: June 6, 2022



Detection of human Carbonyl Reductase 1/CBR1 by western blot. *Samples:* Whole cell lysate (10 µg) from GaMG, HEK293T, MCF-7, and HeLa cells prepared using NETN lysis buffer. *Antibody:* Affinity purified rabbit anti-Carbonyl Reductase 1/CBR1 antibody A304-772A Lot 2 used for WB at 0.04 µg/ml. *Detection:* Chemiluminescence with an exposure time of 10 seconds.



Detection of human Carbonyl Reductase 1/CBR1 by western blot of immunoprecipitates. *Samples:* Whole cell lysate (1.0 mg per IP reaction; 20% of IP loaded) from HEK293T cells prepared using NETN lysis buffer. *Antibodies:* Affinity purified rabbit anti-Carbonyl Reductase 1/CBR1 antibody A304-772A Lot 2 used for IP at 6 µg per reaction. Carbonyl Reductase 1/CBR1 was also immunoprecipitated by a previous lot of this antibody (A304-772A Lot 1) and rabbit anti-Carbonyl Reductase 1/CBR1 antibody A304-773A. For blotting immunoprecipitated Carbonyl Reductase 1/CBR1, A304-772A was used at 0.04 µg/ml. *Detection:* Chemiluminescence with an exposure time of 10 seconds.