



# SZABO SCANDIC

Part of Europa Biosite

## Produktinformation



Forschungsprodukte & Biochemikalien



Zellkultur & Verbrauchsmaterial



Diagnostik & molekulare Diagnostik



Laborgeräte & Service

Weitere Information auf den folgenden Seiten!  
See the following pages for more information!



### Lieferung & Zahlungsart

siehe unsere [Liefer- und Versandbedingungen](#)

### Zuschläge

- Mindermengenzuschlag
- Trockeneiszuschlag
- Gefahrgutzuschlag
- Expressversand

### SZABO-SCANDIC HandelsgmbH

Quellenstraße 110, A-1100 Wien

T. +43(0)1 489 3961-0

F. +43(0)1 489 3961-7

[mail@szabo-scandic.com](mailto:mail@szabo-scandic.com)

[www.szabo-scandic.com](http://www.szabo-scandic.com)

[linkedin.com/company/szaboscandic](https://www.linkedin.com/company/szaboscandic) 

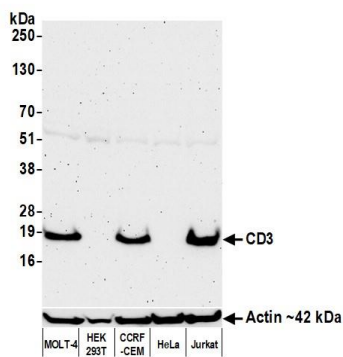
# CD3E Monoclonal Antibody [UCHT1]

Mouse Monoclonal

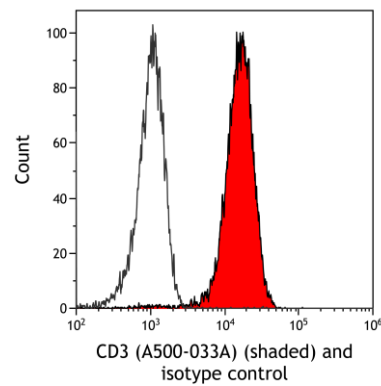
Purified	Protein ID	NP_000724.1
Catalog No. A500-033A-T	GeneID	916
Lot No. A500-033A-T-1		

APPLICATIONS	WB, F
SPECIES REACTIVITY	Human
AMOUNT	20 µl (2 blots)
CONCENTRATION	1000 µg/ml
STORAGE/SHELF LIFE	2 – 8°C / 1 year from date of receipt
PHYSICAL STATE	Liquid
BUFFER	Phosphate Buffered Saline (PBS) containing 0.09% Sodium Azide
ISOTYPE	IgG1
CLONE #	UCHT1
ORIGIN	USA
PRODUCTION PROCEDURES	Monoclonal antibody was purified from cell culture supernatant. Immunogen was human infant thymocytes and Sezary cells.
APPLICATIONS	Centrifuge tube to remove product from lid. Optimal working dilutions should be determined experimentally by the investigator. Prepare working dilution immediately before use.  Western Blot 1:1,000  Flow Cytometry Live or cells fixed in 4% formaldehyde and permeabilized with 90% methanol. 0.5 µl per 1 x 10 <sup>6</sup> cells.
ADDITIONAL INFO	<a href="https://www.fortislifesciences.com/p/A500-033A-T">https://www.fortislifesciences.com/p/A500-033A-T</a> Use the link above to view SDS, a current list of citations, and other product specific information.

This document certifies that this product has met all of the quality control standards defined by Bethyl Laboratories, Inc.  
Michael Spencer, PhD Date: June 30, 2022



**Detection of human CD3E by western blot.** *Samples:* Whole cell lysate (50 µg) from MOLT-4, HEK293T, CCRF-CEM, HeLa, and Jurkat cells prepared using NETN lysis buffer. *Antibody:* Mouse anti-CD3E monoclonal antibody [UCHT1] (A500-033A-T lot 1) used at 1:1000. *Secondary:* HRP-conjugated goat anti-mouse IgG (A90-116P). Chemiluminescence with an exposure time of 3 minutes. Lower Panel: Rabbit anti-Actin recombinant monoclonal antibody [BLR057F] (A700-057).



**Detection of human CD3E (shaded) in Jurkat cells by flow cytometry.** *Antibody:* Mouse anti-CD3 recombinant monoclonal antibody [UCHT1] (A500-033A-T) or isotype control (unshaded). *Secondary:* DyLight® 488-conjugated goat anti-mouse IgG (A90-116D2).