



# SZABO SCANDIC

Part of Europa Biosite

## Produktinformation



Forschungsprodukte & Biochemikalien



Zellkultur & Verbrauchsmaterial



Diagnostik & molekulare Diagnostik



Laborgeräte & Service

Weitere Information auf den folgenden Seiten!  
See the following pages for more information!



### Lieferung & Zahlungsart

siehe unsere [Liefer- und Versandbedingungen](#)

### Zuschläge

- Mindermengenzuschlag
- Trockeneiszuschlag
- Gefahrgutzuschlag
- Expressversand

### SZABO-SCANDIC HandelsgmbH

Quellenstraße 110, A-1100 Wien

T. +43(0)1 489 3961-0

F. +43(0)1 489 3961-7

[mail@szabo-scandic.com](mailto:mail@szabo-scandic.com)

[www.szabo-scandic.com](http://www.szabo-scandic.com)

[linkedin.com/company/szaboscandic](https://www.linkedin.com/company/szaboscandic) 

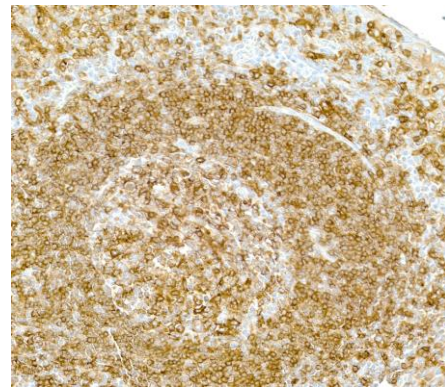
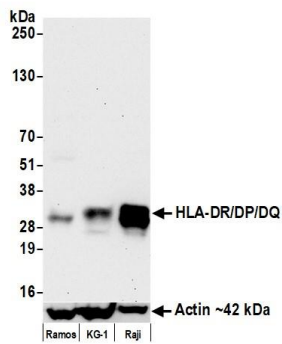
# HLA-DR/DP/DQ Monoclonal Antibody [CR3/43]

Mouse Monoclonal

Purified		RefSeq ID	NP_061984.2
Catalog No.	A500-034A-T	Uniprot ID	P01903
Lot No.	1	GenelD	3122

<b>APPLICATIONS</b>	WB, IHC, ICC
<b>SPECIES REACTIVITY</b>	Human
<b>AMOUNT</b>	10 µl (5+ tests)
<b>CONCENTRATION</b>	250 µg/ml
<b>STORAGE/SHELF LIFE</b>	2 – 8°C / 1 year from date of receipt
<b>PHYSICAL STATE</b>	Liquid
<b>BUFFER</b>	Phosphate Buffered Saline (PBS) with 0.1% BSA and 0.09% Sodium Azide
<b>ISOTYPE</b>	IgG1
<b>CLONE #</b>	CR3/43
<b>ORIGIN</b>	USA
<b>PRODUCTION PROCEDURES</b>	Monoclonal antibody was purified from cell culture supernatant.  Immunogen was cells from human tonsil.
<b>APPLICATIONS</b>	Centrifuge tube to remove product from lid. Optimal working dilutions should be determined experimentally by the investigator. Prepare working dilution immediately before use.  Western Blot 1:1,000 Immunohistochemistry 1:100 to 1:500. Epitope retrieval with citrate buffer pH6.0 is recommended for FFPE tissue sections. Immunocytochemistry 1:100 to 1:500. Epitope retrieval with citrate buffer pH6.0 is recommended for FFPE cell sections.
<b>IHC HUMAN CONTROLS</b>	Appendix, Colon Carcinoma, Liver Carcinoma, Tonsil, C5/MJ Cells, Daudi Cells, JVM-2 Cells, MJ Cells, Raji Cells, VLN3G2 Cells
<b>ADDITIONAL INFO</b>	<a href="https://www.fortislife.com/p/A500-034A-T">https://www.fortislife.com/p/A500-034A-T</a> Use the link above to view SDS, a current list of citations, and other product specific information.

This document certifies that this product has met all of the quality control standards defined by Bethyl Laboratories, Inc.  
Michael Spencer, PhD Date: July 28, 2023

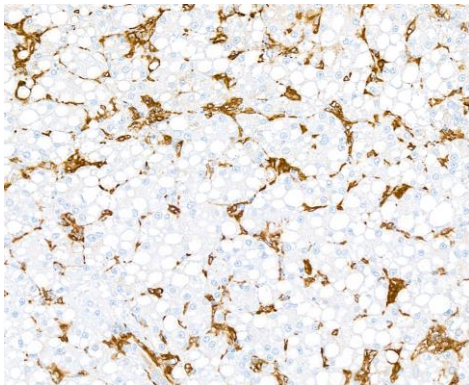


#### Detection of human HLA-DR/DP/DQ by western blot.

**Samples:** Whole cell lysate (50 µg) from Ramos, KG-1, and Raji (10 µg) cells prepared using NETN lysis buffer.  
**Antibody:** Mouse anti-HLA-DR/DP/DQ monoclonal antibody [CR3-43] (A500-034A-T lot 1) used at 1:1000.  
**Secondary:** HRP-conjugated goat anti-mouse IgG (A90-116P). **Detection:** Chemiluminescence with an exposure time of 30 seconds. Lower Panel: Rabbit anti-Actin recombinant monoclonal antibody [BLR057F] (A700-057).

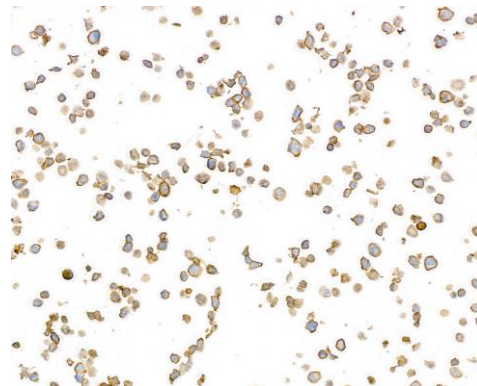
#### Detection of human HLA/DR/DP/DQ by immunohistochemistry.

**Sample:** FFPE section of tonsil.  
**Antibody:** Mouse anti-HLA/DR/DP/DQ monoclonal antibody [CR3/43] (A500-034A-T-1). **Secondary:** HRP-conjugated goat anti-mouse IgG (A90-116P).



#### Detection of human HLA/DR/DP/DQ by immunohistochemistry.

**Sample:** FFPE section of liver carcinoma.  
**Antibody:** Mouse anti-HLA/DR/DP/DQ monoclonal antibody [CR3/43] (A500-034A-T-1).  
**Secondary:** HRP-conjugated goat anti-mouse IgG (A90-116P).



#### Detection of human HLA/DR/DP/DQ by immunocytochemistry.

**Sample:** FFPE section of VLN3G2 cells.  
**Antibody:** Mouse anti-HLA/DR/DP/DQ monoclonal antibody [CR3/43] (A500-034A-T-1). **Secondary:** HRP-conjugated goat anti-mouse IgG (A90-116P).