



SZABO SCANDIC

Part of Europa Biosite

Produktinformation



Forschungsprodukte & Biochemikalien



Zellkultur & Verbrauchsmaterial



Diagnostik & molekulare Diagnostik



Laborgeräte & Service

Weitere Information auf den folgenden Seiten!
See the following pages for more information!



Lieferung & Zahlungsart

siehe unsere [Liefer- und Versandbedingungen](#)

Zuschläge

- Mindermengenzuschlag
- Trockeneiszuschlag
- Gefahrgutzuschlag
- Expressversand

SZABO-SCANDIC HandelsgmbH

Quellenstraße 110, A-1100 Wien

T. +43(0)1 489 3961-0

F. +43(0)1 489 3961-7

mail@szabo-scandic.com

www.szabo-scandic.com

[linkedin.com/company/szaboscandic](https://www.linkedin.com/company/szaboscandic) 

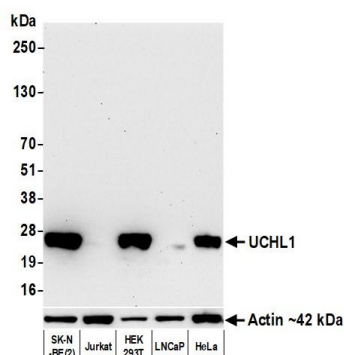
UCHL1 Recombinant Monoclonal Antibody [BLR216K]

Rabbit Recombinant Monoclonal

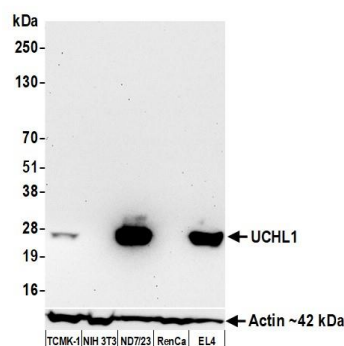
Purified		Protein ID	NP_004172.2
Catalog No.	A700-216-T	GeneID	7345
Lot No.	A700-216-T-1		

APPLICATIONS	WB, IHC, ICC, F
SPECIES REACTIVITY	Human, Mouse
AMOUNT	10 µl (5+ tests)
CONCENTRATION	12.5 µg/ml
STORAGE/SHELF LIFE	2 – 8°C / 1 year from date of receipt
PHYSICAL STATE	Liquid
BUFFER	Borate Buffered Saline (BBS) pH 8.2 with 0.1% BSA and 0.09% Sodium Azide
ISOTYPE	IgG
CLONE #	BLR216K
ORIGIN	USA
PRODUCTION PROCEDURES	Recombinant antibody was purified from cell culture supernatant. Immunogen was a peptide representing a region between residue 50 and 100 of human Ubiquitin carboxyl-terminal hydrolase isozyme L1 (UCHL1) using the numbering given in entry NP_004172.2 (Gene ID 7345).
APPLICATIONS	Centrifuge tube to remove product from lid. Optimal working dilutions should be determined experimentally by the investigator. Prepare working dilution immediately before use. Western Blot 1:1,000 Immunohistochemistry 1:100 to 1:500. Epitope retrieval with citrate Buffer pH 6.0 is recommended for FFPE tissue sections. Immunocytochemistry 1:100 to 1:500. Epitope retrieval with citrate Buffer pH 6.0 is recommended for FFPE cell sections. Flow Cytometry Fixed in 4% formaldehyde and permeabilized with 90% methanol. 0.5 µl per 1 x 10 ⁶ cells.
IHC HUMAN CONTROLS	Prostate Carcinoma, Skin Squamous Cell Carcinoma, DU145 Cells, SK-N-BE (2) Cells
IHC MOUSE CONTROLS	Brain, ND7/23 Cells
ADDITIONAL INFO	https://www.fortislife.com/p/A700-216-T Use the link above to view SDS, a current list of citations, and other product specific information.

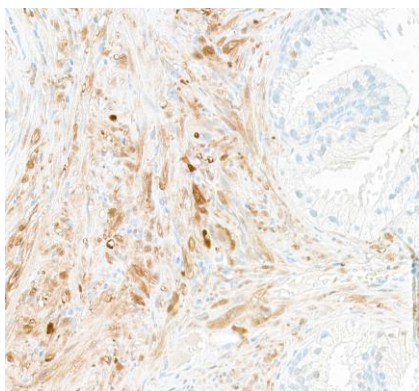
This document certifies that this product has met all of the quality control standards defined by Bethyl Laboratories, Inc.
Michael Spencer, PhD Date: June 30, 2022



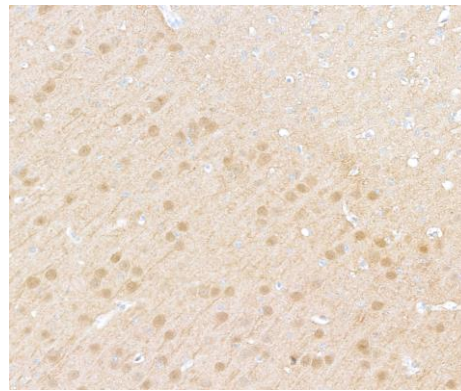
Detection of human UCHL1 by western blot. *Samples:* Whole cell lysate (10 µg) from SK-N-BE(2), Jurkat, HEK293T, LNCaP, and HeLa cells prepared using NETN lysis buffer. *Antibody:* Rabbit anti-UCHL1 recombinant monoclonal antibody [BLR216K] (A700-216-T lot 1) used at 1:1000. *Secondary:* HRP-conjugated goat anti-rabbit IgG (A120-101P). Chemiluminescence with an exposure time of 30 seconds. Lower Panel: Rabbit anti-Actin recombinant monoclonal antibody [BLR057F] (A700-057).



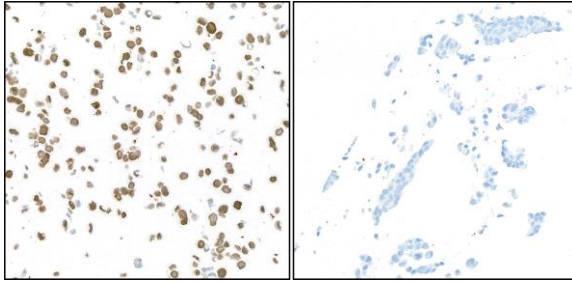
Detection of mouse UCHL1 by western blot. *Samples:* Whole cell lysate (50 µg) from TCMK-1, NIH 3T3, ND7/23 (10 µg), RenCa, and EL4 (10 µg) cells prepared using NETN lysis buffer. *Antibody:* Rabbit anti-UCHL1 recombinant monoclonal antibody [BLR216K] (A700-216-T lot 1) used at 1:1000. *Secondary:* HRP-conjugated goat anti-rabbit IgG (A120-101P). Chemiluminescence with an exposure time of 30 seconds. Lower Panel: Rabbit anti-Actin recombinant monoclonal antibody [BLR057F] (A700-057).



Detection of human UCHL1 by immunohistochemistry. *Sample:* FFPE section of prostate carcinoma. *Antibody:* Rabbit anti-UCHL1 recombinant monoclonal antibody [BLR216K] (A700-216-T-1). *Secondary:* HRP-conjugated goat anti-rabbit IgG (A120-501P).

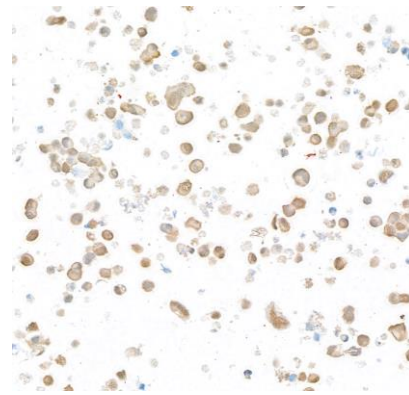


Detection of mouse UCHL1 by immunohistochemistry. *Sample:* FFPE section of mouse brain. *Antibody:* Rabbit anti-UCHL1 recombinant monoclonal antibody [BLR216K] (A700-216-T-1). *Secondary:* HRP-conjugated goat anti-rabbit IgG (A120-501P).



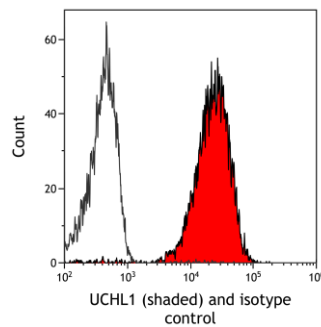
Detection of human UCHL1 by immunocytochemistry.

Sample: FFPE section of DU145 cells (left –positive) and LNCaP cells (right – negative). *Antibody:* Rabbit anti-UCHL1 recombinant monoclonal antibody [BLR216K] (A700-216-T-1). *Secondary:* HRP-conjugated goat anti-rabbit IgG (A120-501P).

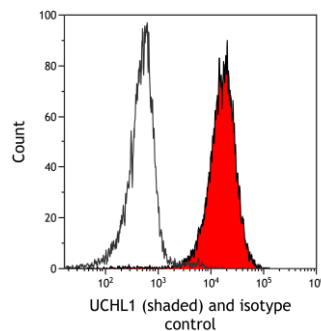


Detection of human UCHL1 by immunocytochemistry.

Sample: FFPE section of ND7/23 cells. *Antibody:* Rabbit anti-UCHL1 recombinant monoclonal antibody [BLR216K] (A700-216-T-1). *Secondary:* HRP-conjugated goat anti-rabbit IgG (A120-501P).



Detection of human UCHL1 (shaded) in A549 cells by flow cytometry. *Antibody:* Rabbit anti-UCHL1 recombinant monoclonal antibody [BLR216K] (A700-216-T) or isotype control (unshaded). *Secondary:* DyLight® 650-conjugated goat anti-rabbit IgG (A120-101D5).



Detection of mouse UHCL1 (shaded) in EL4 cells by flow cytometry. *Antibody:* Rabbit anti-UCHL1 recombinant monoclonal antibody [BLR216K] (A700-216-T) or isotype control (unshaded). *Secondary:* DyLight® 650-conjugated goat anti-rabbit IgG (A120-101D5).