



# SZABO SCANDIC

Part of Europa Biosite

## Produktinformation



Forschungsprodukte & Biochemikalien



Zellkultur & Verbrauchsmaterial



Diagnostik & molekulare Diagnostik



Laborgeräte & Service

Weitere Information auf den folgenden Seiten!  
See the following pages for more information!



### Lieferung & Zahlungsart

siehe unsere [Liefer- und Versandbedingungen](#)

### Zuschläge

- Mindermengenzuschlag
- Trockeneiszuschlag
- Gefahrgutzuschlag
- Expressversand

### SZABO-SCANDIC HandelsgmbH

Quellenstraße 110, A-1100 Wien

T. +43(0)1 489 3961-0

F. +43(0)1 489 3961-7

[mail@szabo-scandic.com](mailto:mail@szabo-scandic.com)

[www.szabo-scandic.com](http://www.szabo-scandic.com)

[linkedin.com/company/szaboscandic](https://www.linkedin.com/company/szaboscandic) 

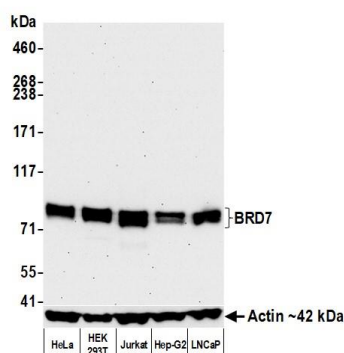
# BRD7 Recombinant Monoclonal Antibody [BLR221K]

## Rabbit Recombinant Monoclonal

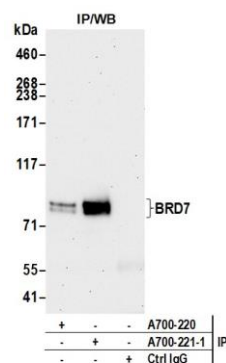
Purified		RefSeq ID	NP_037395.2
Catalog No.	A700-221	Uniprot ID	Q9NPI1
Lot No.	A700-221-1	GeneID	29117

<b>APPLICATIONS</b>	WB, IP, IHC, ICC, Flow Cyt
<b>SPECIES REACTIVITY</b>	Human
<b>AMOUNT</b>	100 µl (50+ tests)
<b>CONCENTRATION</b>	500 µg/ml
<b>STORAGE/SHELF LIFE</b>	2 – 8°C / 1 year from date of receipt
<b>PHYSICAL STATE</b>	Liquid
<b>BUFFER</b>	Borate Buffered Saline (BBS) pH 8.2 with 0.1% BSA and 0.09% Sodium Azide
<b>ISOTYPE</b>	IgG
<b>CLONE #</b>	BLR221K
<b>ORIGIN</b>	USA
<b>PRODUCTION PROCEDURES</b>	Recombinant antibody was purified from cell culture supernatant.  Immunogen was a peptide representing a region between residue 601 and the C-terminus (residue 651) of human Bromodomain-containing protein 7 using the numbering given in entry NP_037395.2.
<b>APPLICATIONS</b>	Centrifuge tube to remove product from lid. Optimal working dilutions should be determined experimentally by the investigator. Prepare working dilution immediately before use.  Western Blot 1:1,000 Immunoprecipitation 12 µl/1 mg lysate Immunohistochemistry 1:100 to 1:500. Epitope retrieval with citrate buffer pH 6.0 or Tris-EDTA pH 9.0 is recommended for FFPE tissue sections. Immunocytochemistry 1:100 to 1:500. Epitope retrieval with citrate buffer pH 6.0 or Tris-EDTA pH 9.0 is recommended for FFPE cell sections. Flow Cytometry Fixed in 4% formaldehyde and permeabilized with 90% methanol. 1 µl per 1 x 10 <sup>6</sup> cells.
<b>IHC HUMAN CONTROLS</b>	Breast Carcinoma, Colon Carcinoma, Ovarian Carcinoma, Prostate Carcinoma, Skin Basal Cell Carcinoma, Testis, Tonsil, Jurkat Cells, MOLT-4 Cells, OVCAR-4 Cells, RKO Cells, RPMI-8226 Cells
<b>ADDITIONAL INFO</b>	<a href="https://www.fortislife.com/p/A700-221">https://www.fortislife.com/p/A700-221</a> Use the link above to view SDS, a current list of citations, and other product specific information.

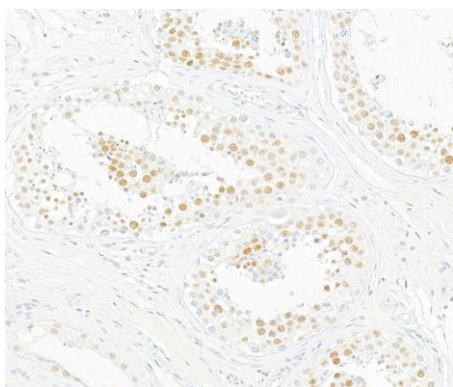
This document certifies that this product has met all of the quality control standards defined by Bethyl Laboratories, Inc.  
Michael Spencer, PhD Date: March 6, 2023



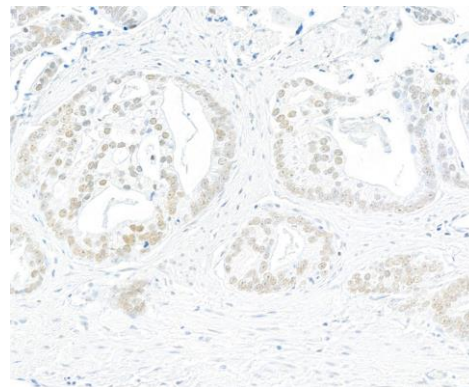
**Detection of human BRD7 by western blot.** *Samples:* Whole cell lysate (25 µg) from HeLa, HEK293T, Jurkat, Hep-G2, and LNCaP cells prepared using NETN lysis buffer. *Antibody:* Rabbit anti-BRD7 recombinant monoclonal antibody [BLR221K] (A700-221 lot 1) used at 1:1000. *Secondary:* HRP-conjugated goat anti-rabbit IgG (A120-101P). *Detection:* Chemiluminescence with an exposure time of 30 seconds. Lower Panel: Rabbit anti-Actin recombinant monoclonal antibody [BLR057F] (A700-057).



**Detection of human BRD7 by western blot of immunoprecipitates.** *Samples:* Whole cell lysate (1.0 mg per IP reaction; 10% of IP loaded) from HeLa cells prepared using NETN lysis buffer. *Antibodies:* Rabbit anti-BRD7 recombinant monoclonal antibody [BLR221K] (A700-221 lot 1) used for IP at 12 µl/mg lysate. BRD7 was also immunoprecipitated by a second antibody against a different epitope of BRD7 (A700-220). For blotting immunoprecipitated BRD7, A700-221 was used at 1:1000. *Detection:* Chemiluminescence with an exposure time of 30 seconds.



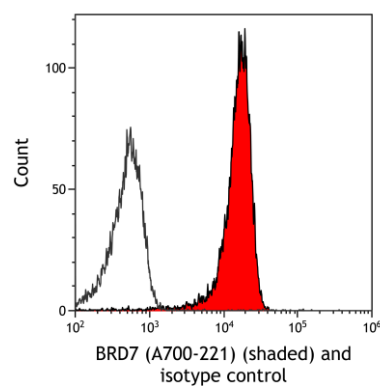
**Detection of human BRD7 by immunohistochemistry.** *Sample:* FFPE section of human testis. *Antibody:* Rabbit anti-BRD7 recombinant monoclonal antibody [BLR221K] (A700-221-1). *Secondary:* HRP-conjugated goat anti-rabbit IgG (A120-501P).



**Detection of human BRD7 by immunohistochemistry.** *Sample:* FFPE section of prostate carcinoma. *Antibody:* Rabbit anti-BRD7 recombinant monoclonal antibody [BLR221K] (A700-221-1). *Secondary:* HRP-conjugated goat anti-rabbit IgG (A120-501P).

**Detection of human BRD7 by immunocytochemistry.**

*Sample:* FFPE section of RKO cells. *Antibody:* Rabbit anti-BRD7 recombinant monoclonal antibody [BLR221K] (A700-221-1). *Secondary:* HRP-conjugated goat anti-rabbit IgG (A120-501P).



**Detection of human BRD7 (shaded) in HeLa cells by flow cytometry.** *Antibody:* Rabbit anti-BRD7 recombinant monoclonal antibody [BLR221K] (A700-221) or isotype control (unshaded). *Secondary:* DyLight® 650-conjugated goat anti-rabbit IgG (A120-101D5).