



# SZABO SCANDIC

Part of Europa Biosite

## Produktinformation



Forschungsprodukte & Biochemikalien



Zellkultur & Verbrauchsmaterial



Diagnostik & molekulare Diagnostik



Laborgeräte & Service

Weitere Information auf den folgenden Seiten!  
See the following pages for more information!



### Lieferung & Zahlungsart

siehe unsere [Liefer- und Versandbedingungen](#)

### Zuschläge

- Mindermengenzuschlag
- Trockeneiszuschlag
- Gefahrgutzuschlag
- Expressversand

### SZABO-SCANDIC HandelsgmbH

Quellenstraße 110, A-1100 Wien

T. +43(0)1 489 3961-0

F. +43(0)1 489 3961-7

[mail@szabo-scandic.com](mailto:mail@szabo-scandic.com)

[www.szabo-scandic.com](http://www.szabo-scandic.com)

[linkedin.com/company/szaboscandic](https://www.linkedin.com/company/szaboscandic) 

# Neurofilament-L Recombinant Monoclonal Antibody [BLR224K]

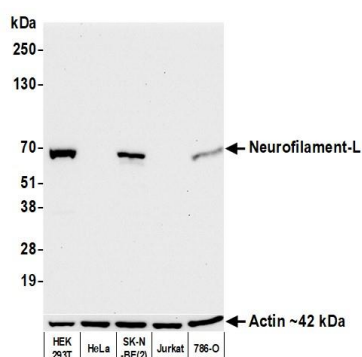
## Rabbit Recombinant Monoclonal

Purified		RefSeq ID	NP_006149.2
Catalog No.	A700-224	Uniprot ID	P07196
Lot No.	1	GeneID	4747

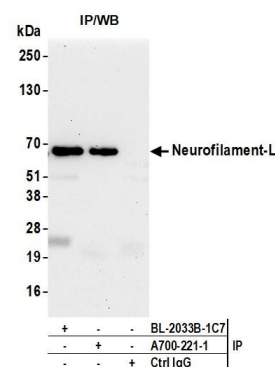
<b>APPLICATIONS</b>	WB, IP, IHC, ICC								
<b>SPECIES REACTIVITY</b>	Human, Mouse, Rat								
<b>AMOUNT</b>	100 µl (50+ tests)								
<b>CONCENTRATION</b>	250 µg/ml								
<b>STORAGE/SHELF LIFE</b>	2 – 8°C / 1 year from date of receipt								
<b>PHYSICAL STATE</b>	Liquid								
<b>BUFFER</b>	Borate Buffered Saline (BBS) pH 8.2 with 0.1% BSA and 0.09% Sodium Azide								
<b>ISOTYPE</b>	IgG								
<b>CLONE #</b>	BLR224K								
<b>ORIGIN</b>	USA								
<b>PRODUCTION PROCEDURES</b>	<p>Recombinant antibody was purified from cell culture supernatant.</p> <p>Immunogen was a peptide representing a region between residue 150 and 200 of human Neurofilament light using the numbering given in entry NP_006149.2 (Gene ID 4747).</p>								
<b>APPLICATIONS</b>	<p>Centrifuge tube to remove product from lid. Optimal working dilutions should be determined experimentally by the investigator. Prepare working dilution immediately before use.</p> <table><tr><td>Western Blot</td><td>1:1000</td></tr><tr><td>Immunoprecipitation</td><td>20 µl/mg lysate</td></tr><tr><td>Immunohistochemistry</td><td>1:100 to 1:500. Epitope retrieval with citrate buffer pH 6.0 or Tris-EDTA pH 9.0 is recommended for FFPE tissue sections.</td></tr><tr><td>Immunocytochemistry</td><td>1:100 to 1:500. Epitope retrieval with citrate buffer pH 6.0 is recommended for FFPE cell sections.</td></tr></table>	Western Blot	1:1000	Immunoprecipitation	20 µl/mg lysate	Immunohistochemistry	1:100 to 1:500. Epitope retrieval with citrate buffer pH 6.0 or Tris-EDTA pH 9.0 is recommended for FFPE tissue sections.	Immunocytochemistry	1:100 to 1:500. Epitope retrieval with citrate buffer pH 6.0 is recommended for FFPE cell sections.
Western Blot	1:1000								
Immunoprecipitation	20 µl/mg lysate								
Immunohistochemistry	1:100 to 1:500. Epitope retrieval with citrate buffer pH 6.0 or Tris-EDTA pH 9.0 is recommended for FFPE tissue sections.								
Immunocytochemistry	1:100 to 1:500. Epitope retrieval with citrate buffer pH 6.0 is recommended for FFPE cell sections.								
<b>APPLICATION NOTES</b>	<p>All western blot analysis is performed using 5% Milk-TBST for blocking and as antibody diluent. Primary antibody is incubated overnight.</p> <p>Western blots of cell lysates are performed using Goat anti-Rabbit IgG Heavy and Light Chain Antibody (Cat. No. A120-101P).</p> <p>Western blots of immunoprecipitates are performed using Goat anti-Rabbit Light Chain HRP Conjugate (Cat. No. A120-113P) with 5% Normal Pig Serum (Cat. No. S100-020) added to the blocking buffer.</p>								
<b>IHC HUMAN CONTROLS</b>	Brain, Glioblastoma, B35 Cells, SK-N-BE (2) Cells, U-251MG Cells								
<b>IHC MOUSE CONTROLS</b>	Brain								
<b>ADDITIONAL INFO</b>	<p><a href="https://www.fortislife.com/p/A700-224">https://www.fortislife.com/p/A700-224</a></p> <p>Use the link above to view SDS, a current list of citations, and other product specific information.</p>								

This document certifies that this product has met all of the quality control standards defined by Bethyl Laboratories, Inc.  
Michael Spencer, PhD

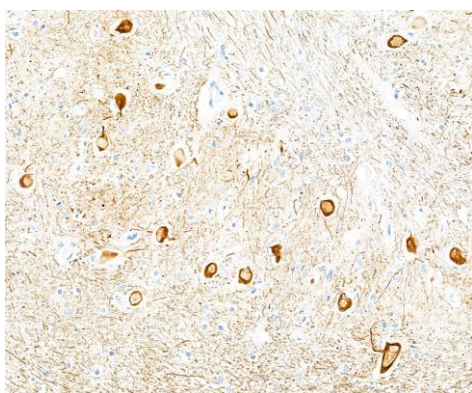
Date: January 19, 2024

**Detection of human Neurofilament-L by western blot.**

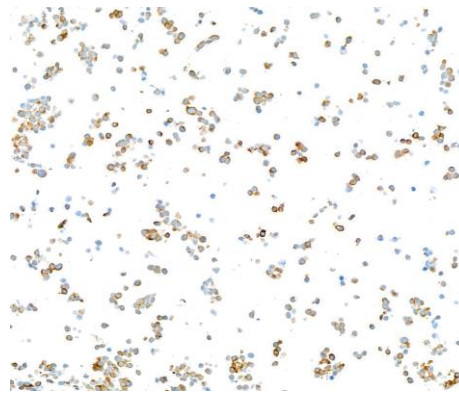
**Samples:** Whole cell lysate (25 µg) from HEK293T, HeLa, SK-N-BE(2), Jurkat, and 786-O cells prepared using NETN lysis buffer. **Antibody:** Rabbit anti-Neurofilament-L recombinant monoclonal antibody [BLR224K] (A700-224 lot 1) used at 1:1000. **Secondary:** HRP-conjugated goat anti-rabbit IgG (A120-101P). **Detection:** Chemiluminescence with an exposure time of 10 seconds. Lower Panel: Rabbit anti-Actin recombinant monoclonal antibody [BLR057F] (A700-057).

**Detection of human Neurofilament-L by western blot of immunoprecipitates.**

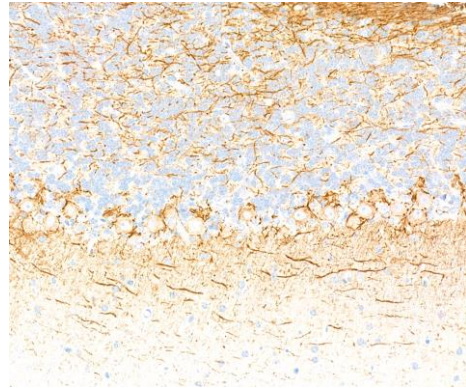
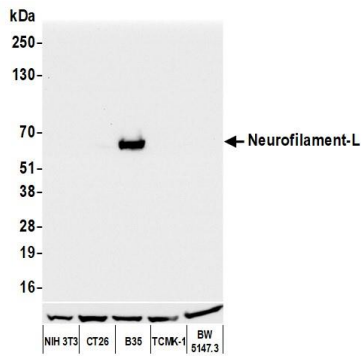
**Samples:** Whole cell lysate (1.0 mg per IP reaction; 20% of IP loaded) from 293T cells prepared using NETN lysis buffer. **Antibodies:** Rabbit anti-Neurofilament-L recombinant monoclonal antibody [BLR221K] (A700-224 lot 1) used for IP at 20 µl/mg lysate. Neurofilament-L was also immunoprecipitated by a second antibody against a different epitope of Neurofilament-L (BL-2033B-1C7). For blotting immunoprecipitated Neurofilament-L, A700-224 was used at 1:1000. **Detection:** Chemiluminescence with an exposure time of 30 seconds.

**Detection of human Neurofilament-L by immunohistochemistry.**

**Sample:** FFPE section of human medulla. **Antibody:** Rabbit anti-Neurofilament-L recombinant monoclonal antibody [BLR224K] (A700-224-1). **Secondary:** HRP-conjugated goat anti-rabbit IgG (A120-501P).

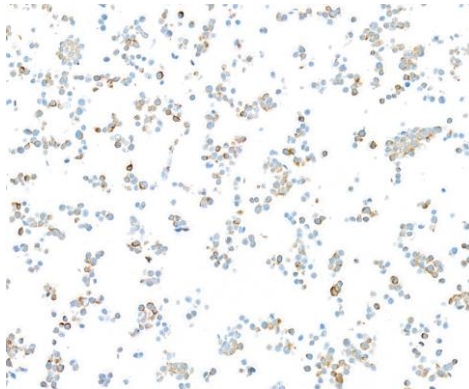
**Detection of human Neurofilament-L by immunocytochemistry.**

**Sample:** FFPE section of SK-N-BE(2) cells. **Antibody:** Rabbit anti-Neurofilament-L recombinant monoclonal antibody [BLR224K] (A700-224-1). **Secondary:** HRP-conjugated goat anti-rabbit IgG (A120-501P).



**Detection of mouse and rat Neurofilament-L by western blot.** *Samples:* Whole cell lysate (50 µg) from NIH 3T3, CT26, B35, TCMK-1, and BW5147.3 cells prepared using NETN lysis buffer. *Antibody:* Rabbit anti-Neurofilament-L recombinant monoclonal antibody [BLR224K] (A700-224 lot 1) used at 1:1000. *Secondary:* HRP-conjugated goat anti-rabbit IgG (A120-101P). *Detection:* Chemiluminescence with an exposure time of 3 seconds.

**Detection of mouse Neurofilament-L by immunohistochemistry.** *Sample:* FFPE section of mouse cerebellum. *Antibody:* Rabbit anti-Neurofilament-L recombinant monoclonal antibody [BLR224K] (A700-224-1). *Secondary:* HRP-conjugated goat anti-rabbit IgG (A120-501P).



**Detection of rat Neurofilament-L by immunocytochemistry.** *Sample:* FFPE section of B35 cells. *Antibody:* Rabbit anti-Neurofilament-L recombinant monoclonal antibody [BLR224K] (A700-224-1). *Secondary:* HRP-conjugated goat anti-rabbit IgG (A120-501P).