



# SZABO SCANDIC

Part of Europa Biosite

## Produktinformation



Forschungsprodukte & Biochemikalien



Zellkultur & Verbrauchsmaterial



Diagnostik & molekulare Diagnostik



Laborgeräte & Service

Weitere Information auf den folgenden Seiten!  
See the following pages for more information!



### Lieferung & Zahlungsart

siehe unsere [Liefer- und Versandbedingungen](#)

### Zuschläge

- Mindermengenzuschlag
- Trockeneiszuschlag
- Gefahrgutzuschlag
- Expressversand

### SZABO-SCANDIC HandelsgmbH

Quellenstraße 110, A-1100 Wien

T. +43(0)1 489 3961-0

F. +43(0)1 489 3961-7

[mail@szabo-scandic.com](mailto:mail@szabo-scandic.com)

[www.szabo-scandic.com](http://www.szabo-scandic.com)

[linkedin.com/company/szaboscandic](https://www.linkedin.com/company/szaboscandic) 

# CD36 Recombinant Monoclonal Antibody [BLR238K]

Rabbit Recombinant Monoclonal

Purified		RefSeq ID	NP_001001548.1
Catalog No.	A700-238-T	Uniprot ID	P16671
Lot No.	A700-238-T-1	GeneID	948

---

<b>APPLICATIONS</b>	WB, IHC, ICC
<b>SPECIES REACTIVITY</b>	Human
<b>AMOUNT</b>	10 µl (5+ tests)
<b>CONCENTRATION</b>	250 µg/ml
<b>STORAGE/SHELF LIFE</b>	2 – 8°C / 1 year from date of receipt
<b>PHYSICAL STATE</b>	Liquid
<b>BUFFER</b>	Borate Buffered Saline (BBS) pH 8.2 with 0.1% BSA and 0.09% Sodium Azide
<b>ISOTYPE</b>	IgG
<b>CLONE #</b>	BLR238K
<b>ORIGIN</b>	USA

**PRODUCTION PROCEDURES** Recombinant antibody was purified from cell culture supernatant.

Immunogen was a recombinant protein representing the extracellular domain of human Platelet glycoprotein 4 (aka, CD36, residues 30–439, NP\_001001548.1).

**APPLICATIONS** Centrifuge tube to remove product from lid. Optimal working dilutions should be determined experimentally by the investigator. Prepare working dilution immediately before use.

Western Blot 1:1,000

Immunohistochemistry 1:100 to 1:500. Epitope retrieval with citrate buffer pH 6.0 is recommended for FFPE tissue sections.

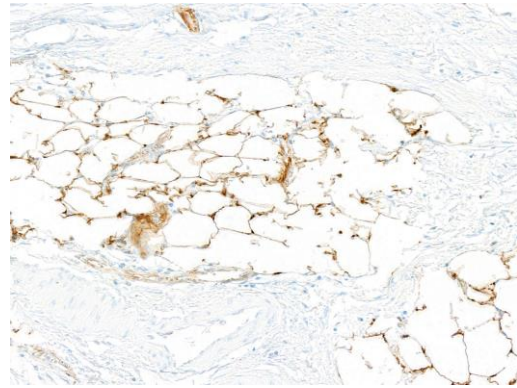
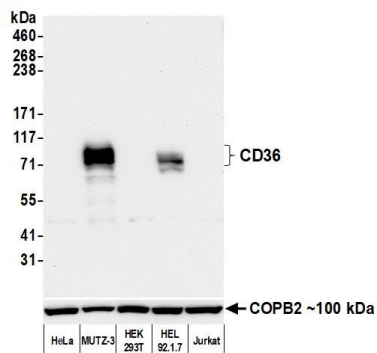
Immunocytochemistry 1:100 to 1:500. Epitope retrieval with citrate buffer pH 6.0 is recommended for FFPE cell sections.

**IHC HUMAN CONTROLS** Adipose Tissue, Breast Carcinoma, Colon Carcinoma, Spleen, HEL 92.1.7 cells, MUTZ-3 Cells

**ADDITIONAL INFO** <https://www.fortislife.com/p/A700-238-T>

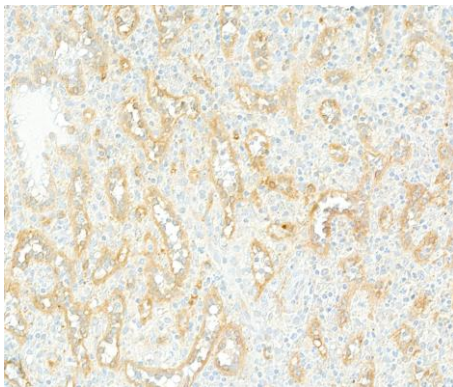
Use the link above to view SDS, a current list of citations, and other product specific information.

This document certifies that this product has met all of the quality control standards defined by Bethyl Laboratories, Inc.  
Michael Spencer, PhD Date: December 19, 2022

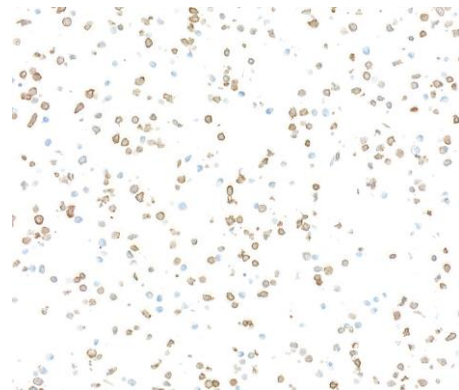


**Detection of human CD36 by western blot.** *Samples:* Whole cell lysate (50  $\mu$ g) from HeLa, MUTZ-3, HEK293T, HEL 92.1.7, and Jurkat cells prepared using NETN lysis buffer. *Antibody:* Rabbit anti-CD36 recombinant monoclonal antibody [BLR238K] (A700-238-T lot 1) used at 1:1000. *Secondary:* HRP-conjugated goat anti-rabbit IgG (A120-101P). Chemiluminescence with an exposure time of 30 seconds. Lower Panel: Rabbit anti-COPB2 antibody (A304-523A).

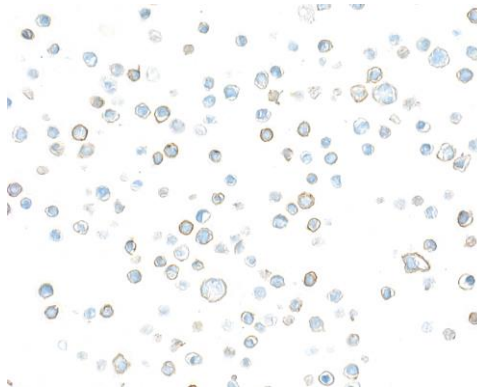
**Detection of human CD36 by immunohistochemistry.** *Sample:* FFPE section of adipose tissue. *Antibody:* Rabbit anti-CD36 recombinant monoclonal antibody [BLR238K] (A700-238-T). *Secondary:* HRP-conjugated goat anti-rabbit IgG (A120-501P).



**Detection of human CD36 by immunohistochemistry.** *Sample:* FFPE section of spleen. *Antibody:* Rabbit anti-CD36 recombinant monoclonal antibody [BLR238K] (A700-238-T). *Secondary:* HRP-conjugated goat anti-rabbit IgG (A120-501P).



**Detection of human CD36 by immunocytochemistry.** *Sample:* FFPE section of MUTZ-3 cells. *Antibody:* Rabbit anti-CD36 recombinant monoclonal antibody [BLR238K] (A700-238-T). *Secondary:* HRP-conjugated goat anti-rabbit IgG (A120-501P).



**Detection of human CD36 by immunocytochemistry.**

*Sample:* FFPE section of HEL 92.1.7 cells. *Antibody:* Rabbit anti-CD36 recombinant monoclonal antibody [BLR238K] (A700-238-T). *Secondary:* HRP-conjugated goat anti-rabbit IgG (A120-501P).