



# SZABO SCANDIC

Part of Europa Biosite

## Produktinformation



Forschungsprodukte & Biochemikalien



Zellkultur & Verbrauchsmaterial



Diagnostik & molekulare Diagnostik



Laborgeräte & Service

Weitere Information auf den folgenden Seiten!  
See the following pages for more information!



### Lieferung & Zahlungsart

siehe unsere [Liefer- und Versandbedingungen](#)

### Zuschläge

- Mindermengenzuschlag
- Trockeneiszuschlag
- Gefahrgutzuschlag
- Expressversand

### SZABO-SCANDIC HandelsgmbH

Quellenstraße 110, A-1100 Wien

T. +43(0)1 489 3961-0

F. +43(0)1 489 3961-7

[mail@szabo-scandic.com](mailto:mail@szabo-scandic.com)

[www.szabo-scandic.com](http://www.szabo-scandic.com)

[linkedin.com/company/szaboscandic](https://www.linkedin.com/company/szaboscandic) 

# CEACAM1 Recombinant Monoclonal Antibody [BLR240L]

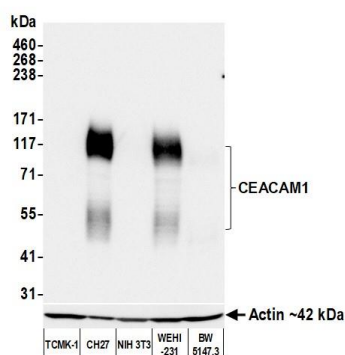
Rabbit Recombinant Monoclonal

Purified		RefSeq ID	NP_001034274.1
Catalog No.	A700-240	Uniprot ID	P31809
Lot No.	A700-240-1	GeneID	26365

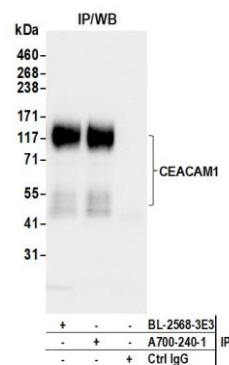
---

<b>APPLICATIONS</b>	WB, IP, IHC, ICC
<b>SPECIES REACTIVITY</b>	Mouse
<b>AMOUNT</b>	100 µl (50+ tests)
<b>CONCENTRATION</b>	50 µg/ml
<b>STORAGE/SHELF LIFE</b>	2 - 8°C / 1 year from date of receipt
<b>PHYSICAL STATE</b>	Liquid
<b>BUFFER</b>	Borate Buffered Saline (BBS) pH 8.2 with 0.1% BSA and 0.09% Sodium Azide
<b>ISOTYPE</b>	IgG
<b>CLONE #</b>	BLR240L
<b>ORIGIN</b>	USA
<b>PRODUCTION PROCEDURES</b>	Recombinant antibody was purified from cell culture supernatant.  Immunogen was a recombinant protein representing the extracellular domain of mouse Carcinoembryonic antigen-related cell adhesion molecule 1 (aka CEACAM1, residues 35-141, NP_001034274.1).
<b>APPLICATIONS</b>	Centrifuge tube to remove product from lid. Optimal working dilutions should be determined experimentally by the investigator. Prepare working dilution immediately before use.  Western Blot                      1:1,000  Immunoprecipitation            20 µl/1 mg lysate  Immunohistochemistry        1:100 to 1:500. Epitope retrieval with citrate buffer pH 6.0 is recommended for FFPE tissue sections.  Immunocytochemistry        1:100 to 1:500. Epitope retrieval with citrate buffer pH 6.0 is recommended for FFPE cell sections.
<b>IHC MOUSE CONTROLS</b>	Bone Marrow, Intestine, Liver, CH27 Cells, F9 Cells, WEHI-231 Cells
<b>ADDITIONAL INFO</b>	<a href="https://www.fortislife.com/p/A700-240">https://www.fortislife.com/p/A700-240</a> Use the link above to view SDS, a current list of citations, and other product specific information.

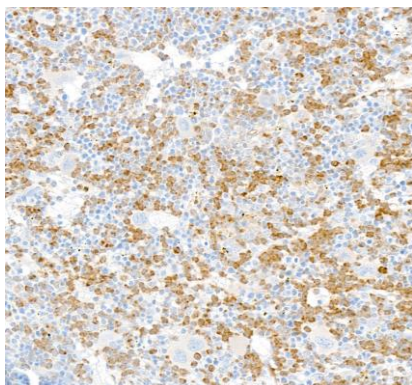
This document certifies that this product has met all of the quality control standards defined by Bethyl Laboratories, Inc.  
Michael Spencer, PhD Date: January 30, 2023



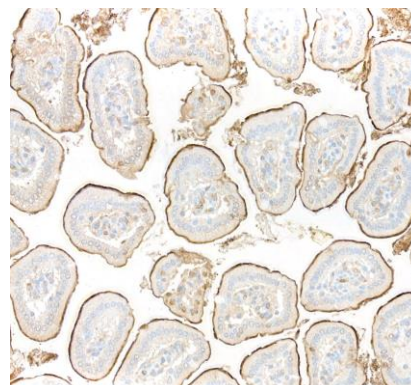
**Detection of mouse CEACAM1 by western blot.** *Samples:* Whole cell lysate (25  $\mu$ g) prepared using NETN buffer from TCMK-1, CH27 (10  $\mu$ g), NIH 3T3, WEHI-231, and BW5147.3 cells prepared using NETN lysis buffer. *Antibody:* Rabbit anti-CEACAM1 recombinant monoclonal antibody [BLR240L] (A700-240 lot 1) used at 1:1000. *Secondary:* HRP-conjugated goat anti-rabbit IgG (A120-101P). Chemiluminescence with an exposure time of 3 seconds. Lower Panel: Rabbit anti-Actin recombinant monoclonal antibody [BLR057F] (A700-057).



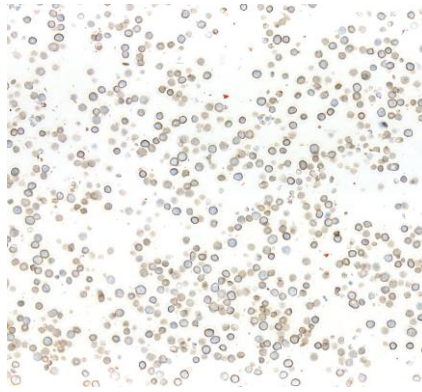
**Detection of mouse CEACAM1 by western blot of immunoprecipitates.** *Samples:* Whole cell lysate (1.0 mg per IP reaction; 20% of IP loaded) from WEHI-231 cells prepared using NETN lysis buffer. *Antibodies:* Rabbit anti-CEACAM1 recombinant monoclonal antibody [BLR240L] (A700-240 lot 1) used for IP at 20  $\mu$ l/mg lysate. CEACAM1 was also immunoprecipitated by a second antibody against a different epitope of CEACAM1 (BL-2568-3E3). For blotting immunoprecipitated CEACAM1, A700-240 was used at 1:1000. Chemiluminescence with an exposure time of 3 seconds.



**Detection of mouse CEACAM1 by immunohistochemistry.** *Sample:* FFPE section of mouse bone marrow. *Antibody:* Rabbit anti-CEACAM1 recombinant monoclonal antibody [BLR240L] (A700-240). *Secondary:* HRP-conjugated goat anti-rabbit IgG (A120-501P).



**Detection of mouse CEACAM1 by immunohistochemistry.** *Sample:* FFPE section of mouse intestine. *Antibody:* Rabbit anti-CEACAM1 recombinant monoclonal antibody [BLR240L] (A700-240). *Secondary:* HRP-conjugated goat anti-rabbit IgG (A120-501P).



**Detection of mouse CEACAM1 by immunocytochemistry.**

*Sample:* FFPE section of mouse WEHI-231 cells. *Antibody:* Rabbit anti-CEACAM1 recombinant monoclonal antibody [BLR240L] (A700-240). *Secondary:* HRP-conjugated goat anti-rabbit IgG (A120-501P).