



SZABO SCANDIC

Part of Europa Biosite

Produktinformation



Forschungsprodukte & Biochemikalien



Zellkultur & Verbrauchsmaterial



Diagnostik & molekulare Diagnostik



Laborgeräte & Service

Weitere Information auf den folgenden Seiten!
See the following pages for more information!



Lieferung & Zahlungsart

siehe unsere [Liefer- und Versandbedingungen](#)

Zuschläge

- Mindermengenzuschlag
- Trockeneiszuschlag
- Gefahrgutzuschlag
- Expressversand

SZABO-SCANDIC HandelsgmbH

Quellenstraße 110, A-1100 Wien

T. +43(0)1 489 3961-0

F. +43(0)1 489 3961-7

mail@szabo-scandic.com

www.szabo-scandic.com

[linkedin.com/company/szaboscandic](https://www.linkedin.com/company/szaboscandic) 

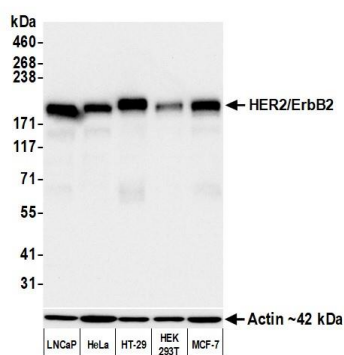
HER2/ErbB2 Recombinant Monoclonal Antibody [BLR241L]

Rabbit Recombinant Monoclonal

Purified		RefSeq ID	NP_004439.2
Catalog No.	A700-241-T	Uniprot ID	P04626
Lot No.	A700-241-T-1	GeneID	2064

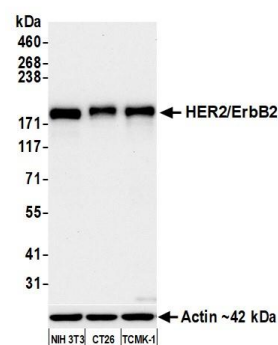
APPLICATIONS	WB, IP, IHC, ICC, Flow Cyt
SPECIES REACTIVITY	Human, Mouse
AMOUNT	10 µl (5+ tests)
CONCENTRATION	250 µg/ml
STORAGE/SHELF LIFE	2 - 8°C / 1 year from date of receipt
PHYSICAL STATE	Liquid
BUFFER	Borate Buffered Saline (BBS) pH 8.2 with 0.1% BSA and 0.09% Sodium Azide
ISOTYPE	IgG
CLONE #	BLR241L
ORIGIN	USA
PRODUCTION PROCEDURES	Recombinant antibody was purified from cell culture supernatant. Immunogen was a peptide representing a region between residue 1205 and the C-terminus (residue 1255) of human receptor tyrosine-protein kinase ErbB-2 (aka HER2) using the numbering given in entry NP_004439.2 (Gene ID 2064).
APPLICATIONS	Centrifuge tube to remove product from lid. Optimal working dilutions should be determined experimentally by the investigator. Prepare working dilution immediately before use. Western Blot 1:1,000 Immunoprecipitation 20 µl/1 mg lysate Immunohistochemistry 1:100 to 1:500. Epitope retrieval with Tris-EDTA pH 9.0 is recommended for FFPE tissue sections. Immunocytochemistry 1:100 to 1:500. Epitope retrieval with Tris-EDTA pH 9.0 is recommended for FFPE cell sections. Flow Cytometry Fixed in 4% formaldehyde and permeabilized with 90% methanol. 0.25 µl per 1 x 10 ⁶ cells.
IHC HUMAN CONTROLS	Bladder Carcinoma, Breast Carcinoma, Colon Carcinoma, Skin Carcinoma, Hep-G2 Cells, LNCap Cells, MCF-7 Cells, PANC-1 Cells
ADDITIONAL INFO	https://www.fortislife.com/p/A700-241-T Use the link above to view SDS, a current list of citations, and other product specific information.

This document certifies that this product has met all of the quality control standards defined by Bethyl Laboratories, Inc.
Michael Spencer, PhD Date: March 2, 2023



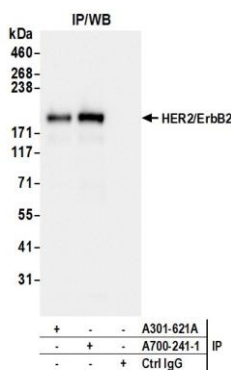
Detection of human HER2/ErbB2 by western blot.

Samples: Whole cell lysate (10 µg) from LNCaP, HeLa, HT-29, HEK293T, and MCF-7 cells prepared using NETN lysis buffer. **Antibody:** Rabbit anti-HER2/ErbB2 recombinant monoclonal antibody [BLR241L] (A700-241-T lot 1) used at 1:1000. **Secondary:** HRP-conjugated goat anti-rabbit IgG (A120-101P). Chemiluminescence with an exposure time of 10 seconds. Lower Panel: Rabbit anti-Actin recombinant monoclonal antibody [BLR057F] (A700-057).

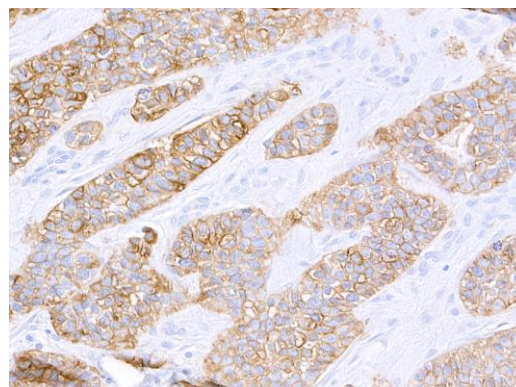


Detection of mouse HER2/ErbB2 by western blot.

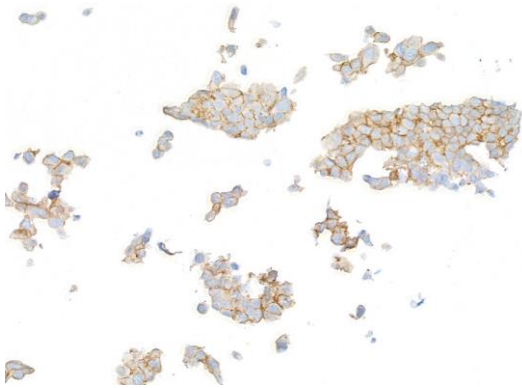
Samples: Whole cell lysate (10 µg) from NIH 3T3, CT26, and TCMK-1 cells prepared using NETN lysis buffer. **Antibody:** Rabbit anti-HER2/ErbB2 recombinant monoclonal antibody [BLR241L] (A700-241-T lot 1) used at 1:1000. **Secondary:** HRP-conjugated goat anti-rabbit IgG (A120-101P). Chemiluminescence with an exposure time of 30 seconds. Lower Panel: Rabbit anti-Actin recombinant monoclonal antibody [BLR057F] (A700-057).



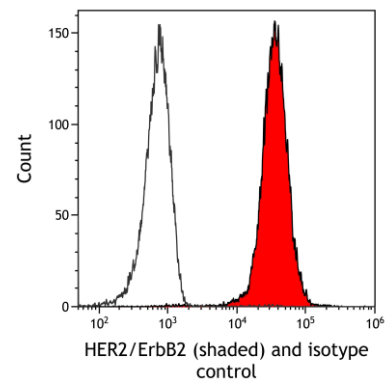
Detection of human HER2/ErbB2 by western blot of immunoprecipitates. **Samples:** Whole cell lysate (1.0 mg per IP reaction; 20% of IP loaded) from HeLa cells prepared using NETN lysis buffer. **Antibodies:** Rabbit anti-HER2/ErbB2 recombinant monoclonal antibody [BLR241L] (A700-241-T lot 1) used for IP at 20 µl/mg lysate. HER2/ErbB2 was also immunoprecipitated by a second antibody against a different epitope of HER2/ErbB2 (A301-621A). For blotting immunoprecipitated HER2/ErbB2, A700-241-T was used at 1:1000. Chemiluminescence with an exposure time of 1 second.



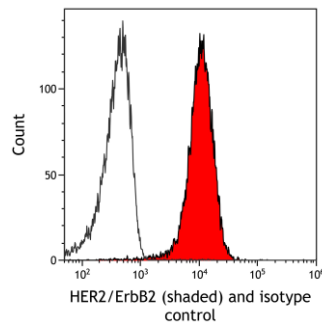
Detection of human HER2/ErbB2 by immunohistochemistry. **Sample:** FFPE section of human breast carcinoma. **Antibody:** Rabbit anti-HER2/ErbB2 recombinant monoclonal antibody [BLR241L] (A700-241-T). **Secondary:** HRP-conjugated goat anti-rabbit IgG (A120-501P).



Detection of human HER2/ErbB2 by immunocytochemistry. *Sample:* FFPE section of LNCaP cells. *Antibody:* Rabbit anti-HER2/ErbB2 recombinant monoclonal antibody [BLR241L] (A700-241-T). *Secondary:* HRP-conjugated goat anti-rabbit IgG (A120-501P).



Detection of human HER2/ErbB2 (shaded) in FaDu cells by flow cytometry. *Antibody:* Rabbit anti-HER2/ErbB2 recombinant monoclonal antibody [BLR241L] (A700-241-T) or isotype control (unshaded). *Secondary:* DyLight® 650-conjugated goat anti-rabbit IgG (A120-101D5).



Detection of mouse HER2/ErbB2 (shaded) in NIH3T3 cells by flow cytometry. *Antibody:* Rabbit anti-HER2/ErbB2 recombinant monoclonal antibody [BLR241L] (A700-241-T) or isotype control (unshaded). *Secondary:* DyLight® 650-conjugated goat anti-rabbit IgG (A120-101D5).