



# SZABO SCANDIC

Part of Europa Biosite

## Produktinformation



Forschungsprodukte & Biochemikalien



Zellkultur & Verbrauchsmaterial



Diagnostik & molekulare Diagnostik



Laborgeräte & Service

Weitere Information auf den folgenden Seiten!  
See the following pages for more information!



### Lieferung & Zahlungsart

siehe unsere [Liefer- und Versandbedingungen](#)

### Zuschläge

- Mindermengenzuschlag
- Trockeneiszuschlag
- Gefahrgutzuschlag
- Expressversand

### SZABO-SCANDIC HandelsgmbH

Quellenstraße 110, A-1100 Wien

T. +43(0)1 489 3961-0

F. +43(0)1 489 3961-7

[mail@szabo-scandic.com](mailto:mail@szabo-scandic.com)

[www.szabo-scandic.com](http://www.szabo-scandic.com)

[linkedin.com/company/szaboscandic](https://www.linkedin.com/company/szaboscandic) 

# PD-L2 Recombinant Monoclonal Antibody [BLR277L]

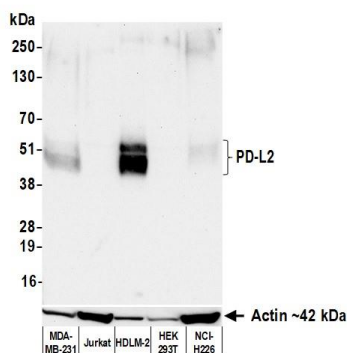
Rabbit Recombinant Monoclonal

Purified		RefSeq ID	NP_079515.2
Catalog No.	A700-277-T	Uniprot ID	Q9BQ51
Lot No.	1	GeneID	80380

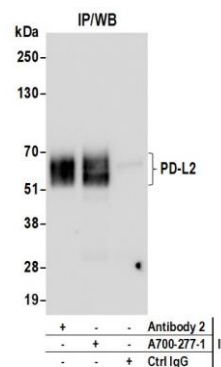
---

<b>APPLICATIONS</b>	WB, IP, IHC, ICC
<b>SPECIES REACTIVITY</b>	Human
<b>AMOUNT</b>	10 µl (5+ tests)
<b>CONCENTRATION</b>	250 µg/ml
<b>STORAGE/SHELF LIFE</b>	2 - 8°C / 1 year from date of receipt
<b>PHYSICAL STATE</b>	Liquid
<b>BUFFER</b>	Borate Buffered Saline (BBS) pH 8.2 with 0.1% BSA and 0.09% Sodium Azide
<b>ISOTYPE</b>	IgG
<b>CLONE #</b>	BLR277L
<b>ORIGIN</b>	USA
<b>PRODUCTION PROCEDURES</b>	Recombinant antibody was purified from cell culture supernatant.  Immunogen was a recombinant protein representing the extracellular domain of human programmed cell death 1 ligand 2 (PD-L2, residues 20-220, NP_079515.2).
<b>APPLICATIONS</b>	Centrifuge tube to remove product from lid. Optimal working dilutions should be determined experimentally by the investigator. Prepare working dilution immediately before use.  Western Blot                      1:1,000 Immunoprecipitation            20 µl/1 mg lysate Immunohistochemistry        1:100 to 1:500. Epitope retrieval with citrate buffer pH 6.0 is recommended for FFPE tissue sections. Immunocytochemistry        1:100 to 1:500. Epitope retrieval with citrate buffer pH 6.0 is recommended for FFPE cell sections.
<b>IHC HUMAN CONTROLS</b>	Appendix, Hodgkin Lymphoma, Tonsil, HDLM-2 Cells
<b>ADDITIONAL INFO</b>	<a href="https://www.fortislife.com/p/A700-277-T">https://www.fortislife.com/p/A700-277-T</a> Use the link above to view SDS, a current list of citations, and other product specific information.

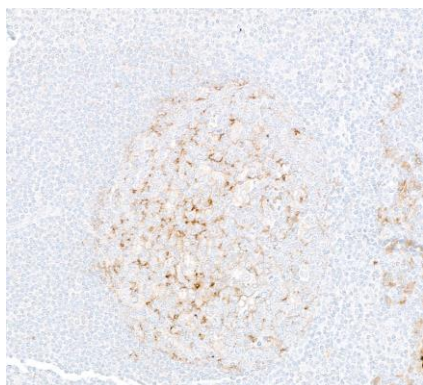
This document certifies that this product has met all of the quality control standards defined by Bethyl Laboratories, Inc.  
Michael Spencer, PhD Date: November 1, 2023



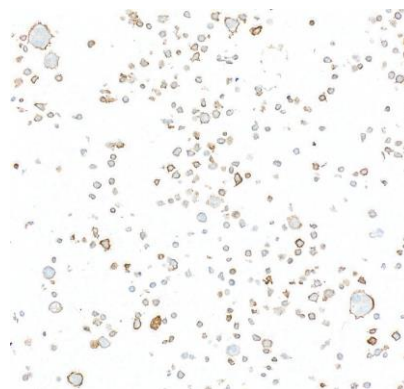
**Detection of human PD-L2 by western blot.** *Samples:* Whole cell lysate (50 µg) from MDA-MB-231, Jurkat, HDLM-2 (10 µg), HEK293T, and NCI-H226 cells prepared using NETN lysis buffer. *Antibody:* Rabbit anti-PD-L2 recombinant monoclonal antibody [BLR277L] (A700-277 lot 1) used at 1:1000. *Secondary:* HRP-conjugated goat anti-rabbit IgG (A120-101P). *Detection:* Chemiluminescence with an exposure time of 30 seconds.



**Detection of human PD-L2 by western blot of immunoprecipitates.** *Samples:* Whole cell lysate (1.0 mg per IP reaction; 20% of IP loaded) from HDLM-2 cells prepared using NETN lysis buffer. *Antibodies:* Rabbit anti-PD-L2 recombinant monoclonal antibody [BLR277L] (A700-277 lot 1) used for IP at 20 µl/mg lysate. PD-L2 was also immunoprecipitated by a second antibody against a different epitope of PD-L2 (Antibody 2). For blotting immunoprecipitated PD-L2, A700-277 was used at 1:1000. *Detection:* Chemiluminescence with an exposure time of 30 seconds.



**Detection of human PD-L2 by immunohistochemistry.** *Sample:* FFPE section of tonsil. *Antibody:* Rabbit anti-PD-L2 recombinant monoclonal antibody [BLR277L] (A700-277). *Secondary:* HRP-conjugated goat anti-rabbit IgG (A120-501P).



**Detection of human PD-L2 by immunocytochemistry.** *Sample:* FFPE section of HDLM-2 cells. *Antibody:* Rabbit anti-PD-L2 recombinant monoclonal antibody [BLR277L] (A700-277). *Secondary:* HRP-conjugated goat anti-rabbit IgG (A120-501P).