



SZABO SCANDIC

Part of Europa Biosite

Produktinformation



Forschungsprodukte & Biochemikalien



Zellkultur & Verbrauchsmaterial



Diagnostik & molekulare Diagnostik



Laborgeräte & Service

Weitere Information auf den folgenden Seiten!
See the following pages for more information!



Lieferung & Zahlungsart

siehe unsere [Liefer- und Versandbedingungen](#)

Zuschläge

- Mindermengenzuschlag
- Trockeneiszuschlag
- Gefahrgutzuschlag
- Expressversand

SZABO-SCANDIC HandelsgmbH

Quellenstraße 110, A-1100 Wien

T. +43(0)1 489 3961-0

F. +43(0)1 489 3961-7

mail@szabo-scandic.com

www.szabo-scandic.com

[linkedin.com/company/szaboscandic](https://www.linkedin.com/company/szaboscandic) 

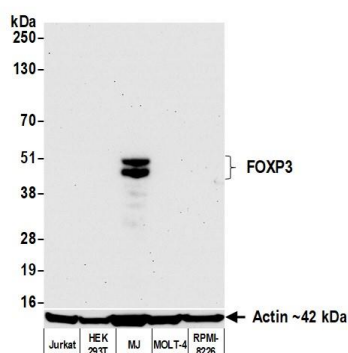
FOXP3 Recombinant Monoclonal Antibody [BLR281L]

Rabbit Recombinant Monoclonal

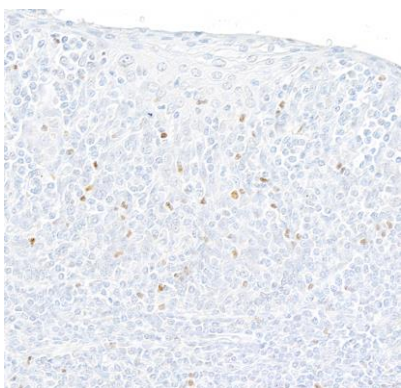
Purified		RefSeq ID	NP_054728.2
Catalog No.	A700-281	Uniprot ID	Q9BZS1
Lot No.	1	GeneID	50943

APPLICATIONS	WB, IP, IHC, ICC
SPECIES REACTIVITY	Human
AMOUNT	100 µl (50+ tests)
CONCENTRATION	1000 µg/ml
STORAGE/SHELF LIFE	2 – 8°C / 1 year from date of receipt
PHYSICAL STATE	Liquid
BUFFER	Borate Buffered Saline (BBS) pH 8.2 with 0.09% Sodium Azide, BSA-Free
ISOTYPE	IgG
CLONE #	BLR281L
ORIGIN	USA
PRODUCTION PROCEDURES	Recombinant antibody was purified from cell culture supernatant. Immunogen was a peptide representing a region between residue 275 and 325 of human Forkhead box protein P3 using the numbering given in entry NP_054728.2 (Gene ID 50943).
APPLICATIONS	Centrifuge tube to remove product from lid. Optimal working dilutions should be determined experimentally by the investigator. Prepare working dilution immediately before use. Western Blot 1:1,000 Immunoprecipitation 6 µl/1 mg lysate Immunohistochemistry 1:100 to 1:500. Epitope retrieval with citrate buffer pH 6.0 is recommended for FFPE tissue sections. Immunocytochemistry 1:100 to 1:500. Epitope retrieval with citrate buffer pH 6.0 is recommended for FFPE cell sections.
IHC HUMAN CONTROLS	Appendix, Breast Carcinoma TIL, Lymph Node, Tonsil, MJ Cells
ADDITIONAL INFO	https://www.fortislife.com/p/A700-281 Use the link above to view SDS, a current list of citations, and other product specific information.

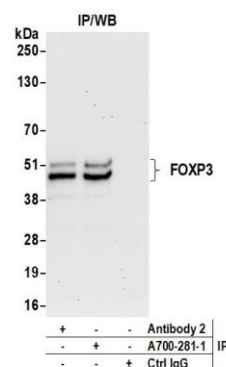
This document certifies that this product has met all of the quality control standards defined by Bethyl Laboratories, Inc.
Michael Spencer, PhD Date: November 29, 2023



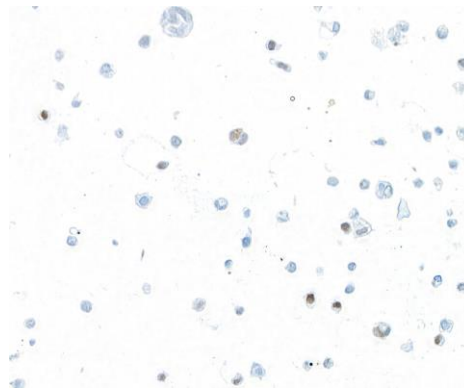
Detection of human FOXP3 by western blot. *Samples:* Whole cell lysate (10 μ g) from Jurkat, HEK293T, MJ, MOLT-4, and RPMI-8226 cells prepared using NETN lysis buffer. *Antibody:* Rabbit anti-FOXP3 recombinant monoclonal antibody [BLR281L] (A700-281 lot 1) used at 1:1000. *Secondary:* HRP-conjugated goat anti-rabbit IgG (A120-101P). *Detection:* Chemiluminescence with an exposure time of 30 seconds. Lower Panel: Rabbit anti-Actin recombinant monoclonal antibody [BLR057F] (A700-057).



Detection of human FOXP3 by immunohistochemistry. *Sample:* FFPE section of tonsil. *Antibody:* Rabbit anti-FOXP3 recombinant monoclonal antibody [BLR281L] (A700-281). *Secondary:* HRP-conjugated goat anti-rabbit IgG (A120-501P).



Detection of human FOXP3 by western blot of immunoprecipitates. *Samples:* Whole cell lysate (1 mg per IP; 5% of IP loaded) from MJ cells prepared using NETN lysis buffer. *Antibodies:* Rabbit anti-FOXP3 recombinant monoclonal antibody [BLR281L] (A700-281 lot 1) used for IP at 6 μ l/mg lysate. FOXP3 was also immunoprecipitated by a second antibody against a different epitope of FOXP3 (Antibody 2). For blotting immunoprecipitated FOXP3, A700-281 was used at 1:1000. *Detection:* Chemiluminescence with an exposure time of 30 seconds.



Detection of human FOXP3 by immunocytochemistry. *Sample:* FFPE section of MJ cells. *Antibody:* Rabbit anti-FOXP3 recombinant monoclonal antibody [BLR281L] (A700-281). *Secondary:* HRP-conjugated goat anti-rabbit IgG (A120-501P).