



# SZABO SCANDIC

Part of Europa Biosite

## Produktinformation



Forschungsprodukte & Biochemikalien



Zellkultur & Verbrauchsmaterial



Diagnostik & molekulare Diagnostik



Laborgeräte & Service

Weitere Information auf den folgenden Seiten!  
See the following pages for more information!



### Lieferung & Zahlungsart

siehe unsere [Liefer- und Versandbedingungen](#)

### Zuschläge

- Mindermengenzuschlag
- Trockeneiszuschlag
- Gefahrgutzuschlag
- Expressversand

### SZABO-SCANDIC HandelsgmbH

Quellenstraße 110, A-1100 Wien

T. +43(0)1 489 3961-0

F. +43(0)1 489 3961-7

[mail@szabo-scandic.com](mailto:mail@szabo-scandic.com)

[www.szabo-scandic.com](http://www.szabo-scandic.com)

[linkedin.com/company/szaboscandic](https://www.linkedin.com/company/szaboscandic) 

# RAF1 /c-Raf Recombinant Monoclonal Antibody [BLR289L]

Rabbit Recombinant Monoclonal

Purified		RefSeq ID	NP_002871.1
Catalog No.	A700-289-T	Uniprot ID	P04049
Lot No.	1	GeneID	5894

---

<b>APPLICATIONS</b>	WB, IP, Flow Cyt
<b>SPECIES REACTIVITY</b>	Human, Mouse
<b>AMOUNT</b>	10 µl (5+ tests)
<b>CONCENTRATION</b>	1000 µg/ml
<b>STORAGE/SHELF LIFE</b>	2 - 8°C / 1 year from date of receipt
<b>PHYSICAL STATE</b>	Liquid
<b>BUFFER</b>	Borate Buffered Saline (BBS) pH 8.2 with 0.09% Sodium Azide, BSA-Free
<b>ISOTYPE</b>	IgG
<b>CLONE #</b>	BLR289L
<b>ORIGIN</b>	USA
<b>PRODUCTION PROCEDURES</b>	Recombinant antibody was purified from cell culture supernatant.

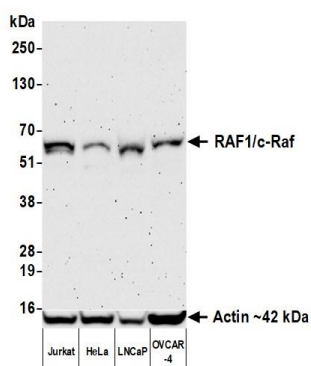
Immunogen was a peptide representing a region between residue 300 and 350 of human RAF proto-oncogene serine/threonine-protein kinase using the numbering given in entry NP\_002871.1 (Gene ID 5894).

**APPLICATIONS** Centrifuge tube to remove product from lid. Optimal working dilutions should be determined experimentally by the investigator. Prepare working dilution immediately before use.

Western Blot	1:1,000
Immunoprecipitation	6 µl/1 mg lysate
Flow Cytometry	Fixed in 4% formaldehyde and permeabilized with 90% methanol. 1 µl per 1 x 10 <sup>6</sup> cells.

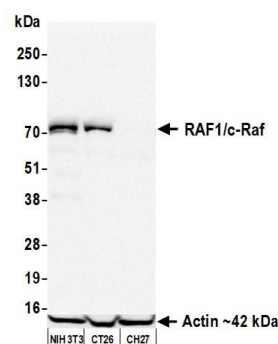
**ADDITIONAL INFO** <https://www.fortislife.com/p/A700-289-T>  
Use the link above to view SDS, a current list of citations, and other product specific information.

This document certifies that this product has met all of the quality control standards defined by Bethyl Laboratories, Inc.  
Michael Spencer, PhD Date: November 1, 2023



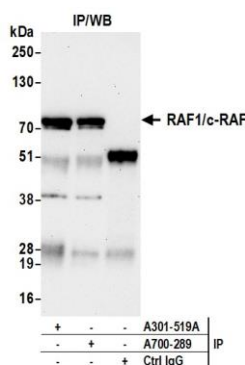
**Detection of human RAF1 /c-Raf by western blot.**

*Samples:* Whole cell lysate (50 µg) from Jurkat, HeLa, LNCaP, and OVCAR-4 cells prepared using NETN lysis buffer. *Antibody:* Rabbit anti-RAF1 /c-Raf recombinant monoclonal antibody [BLR289L] (A700-289 lot 1) used at 1:1000. *Secondary:* HRP-conjugated goat anti-rabbit IgG (A120-101P). *Detection:* Chemiluminescence with an exposure time of 3 minutes. Lower Panel: Rabbit anti-Actin recombinant monoclonal antibody [BLR057F] (A700-057).



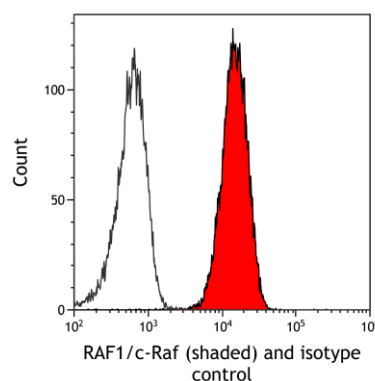
**Detection of mouse RAF1 /c-Raf by western blot.**

*Samples:* Whole cell lysate (50 µg) from NIH 3T3, CT26, and CH27 cells prepared using NETN lysis buffer. *Antibody:* Rabbit anti-RAF1 /c-Raf recombinant monoclonal antibody [BLR289L] (A700-289 lot 1) used at 1:1000. *Secondary:* HRP-conjugated goat anti-rabbit IgG (A120-101P). *Detection:* Chemiluminescence with an exposure time of 30 seconds. Lower Panel: Rabbit anti-Actin recombinant monoclonal antibody [BLR057F] (A700-057).



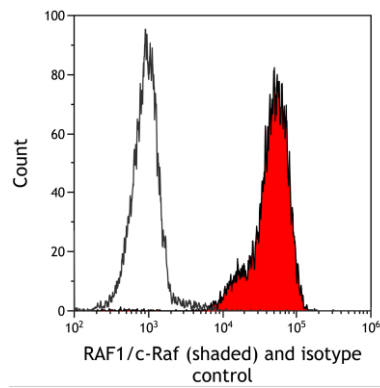
**Detection of human RAF1 /c-Raf by western blot of immunoprecipitates.**

*Samples:* Whole cell lysate (1.0 mg per IP reaction; 20% of IP loaded) from Jurkat cells prepared using NETN lysis buffer. *Antibodies:* Rabbit anti-RAF1 /c-Raf recombinant monoclonal antibody [BLR289L] (A700-289 lot 1) used for IP at 6 µl/mg lysate. RAF1 /c-Raf was also immunoprecipitated by a second antibody against a different epitope of RAF1 /c-Raf (A301-519A). For blotting immunoprecipitated RAF1 /c-Raf, A700-289 was used at 1:1000. *Detection:* Chemiluminescence with an exposure time of 30 seconds.



**Detection of human RAF1 /c-Raf (shaded) in Jurkat cells by flow cytometry.**

*Antibody:* Rabbit anti-RAF1 /c-Raf recombinant monoclonal antibody [BLR289L] (A700-289) or isotype control (unshaded). *Secondary:* DyLight® 650-conjugated goat anti-rabbit IgG (A120-101D5).



**Detection of mouse RAF1/c-Raf (shaded) in EL4 cells by flow cytometry.** *Antibody:* Rabbit anti-RAF1/c-Raf recombinant monoclonal antibody [BLR289L] (A700-289) or isotype control (unshaded). *Secondary:* DyLight® 650-conjugated goat anti-rabbit IgG (A120-101D5).